

NOTICE!!

These documents have been scanned!

Do not place un-scanned documents beneath this notice!

Do not remove this notice from this file!

GPO Jacket No. 560-102
Print Order 61540
Rise Business Services, LLC
Job=AZ15 6/6/2019



Box Number= AZ15125



Claim Begin-End: AMC427326-AMC427326

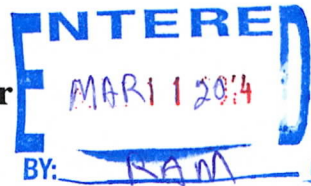
1 Initial Receipt



AZ15125-18

AMC356595-AMC427389

United States Department of the Interior
Bureau of Land Management
 LANDS/RECREATION & PLANNING
 ONE N CENTRAL AVE
 PHOENIX, AZ 85004 -2203
 Phone: 602-417-9200



Receipt

No: 2974701

| | |
|--|--|
| Transaction #: 3063158 | |
| Date of Transaction: 02/24/2014 | |
| CUSTOMER: | |
| ROADRUNNER PROSPECTORS CLUB INC BOX 56804 PHOENIX, AZ 85079 US | |

| LINE # | QTY | DESCRIPTION | REMARKS | UNIT PRICE | TOTAL |
|---------------|------|---|---------|------------|-----------------|
| 1 | 1.00 | LOCATABLE MINERALS / MINING CLAIMS-NEW, UNADJUD, ONE OR MORE AUTH NOS / NEW MINING CLAIM LOCATION FEE \$34 CASES: AMC427326/\$34.00 | | - n/a - | 34.00 |
| 2 | 1.00 | LOCATABLE MINERALS / MINING CLAIMS-NEW, UNADJUD, ONE OR MORE AUTH NOS / NEW MINING CLAIM MAINT FEE \$140 CASES: AMC427326/\$140.00 | | - n/a - | 140.00 |
| 3 | 1.00 | LOCATABLE MINERALS / MINING CLAIMS-NEW, UNADJUD, ONE OR MORE AUTH NOS / NEW MINING CLAIM PROCESSING FEE CASES: AMC427326/\$20.00 | | - n/a - | 20.00 |
| TOTAL: | | | | | \$194.00 |

| PAYMENT INFORMATION | | | |
|---------------------|----------------|---|-----------------------------|
| 1 | AMOUNT: | 194.00 | POSTMARKED: N/A |
| | TYPE: | CASH | RECEIVED: 02/24/2014 |
| | NAME: | ROADRUNNER PROSPECTORS CLUB INC BOX 56804 PHOENIX AZ 85079 US | |

| |
|---------|
| REMARKS |
| |

This receipt was generated by the automated BLM Collections and Billing System and is a paper representation of a portion of the official electronic record contained therein.

NOTICE!!

These documents have been scanned!

Do not place un-scanned documents beneath this notice!

Do not remove this notice from this file!

GPO Jacket No. 560-102
Print Order 61540
Rise Business Services, LLC
Job=AZ15 6/6/2019



Box Number= AZ15125



Claim Begin-End: AMC427326-AMC427326

2 Correspondence



AZ15125-18

AMC356595-AMC427389

**NO
DOCUMENTS
FOUND**

NO DOCUMENTS FOUND
NO DOCUMENTS FOUND

NOTICE!!

These documents have been scanned!

Do not place un-scanned documents beneath this notice!

Do not remove this notice from this file!

GPO Jacket No. 560-102
Print Order 61540
Rise Business Services, LLC
Job=AZ15 6/6/2019



Box Number= AZ15125



Claim Begin-End: AMC427326-AMC427326

3 Transfers



AZ15125-18

AMC356595-AMC427389

**NO
DOCUMENTS
FOUND**

NO DOCUMENTS FOUND
NO DOCUMENTS FOUND

NOTICE!!

These documents have been scanned!

Do not place un-scanned documents beneath this notice!

Do not remove this notice from this file!

GPO Jacket No. 560-102
Print Order 61540
Rise Business Services, LLC
Job=AZ15 6/6/2019



Box Number= AZ15125



Claim Begin-End: AMC427326-AMC427326

4 Annual Filings



AZ15125-18

AMC356595-AMC427389

| | | | | |
|--------|--------|-------------------|------------------|--------|
| 329013 | 247112 | 313473 | 29334 | 374511 |
| 339964 | 350275 | 130488 | 129334 | 365711 |
| 364688 | 331232 | 331455 | 157621 | 191670 |
| 64830 | 321061 | 309888 | 102389 | 348628 |
| 350903 | 314626 | 356380 | 126534 | 430611 |
| 251042 | 244561 | 95198 | 170911 | 328689 |
| 68526 | 196365 | 358378 | 11413 | 328593 |
| 433937 | 258455 | 358379 | 329388 | 371802 |
| 440315 | 446010 | 48976 | 364820 | 368415 |
| 326754 | 430534 | 254410 | 366267 | 366267 |
| 314304 | 411385 | 328742 | 427326 | 371350 |
| 364340 | 407030 | 74734 | 89414 | 96051 |
| | 327930 | 326311 | 300332 | 451088 |
| | 328302 | 291104 | 82212 | 362558 |
| | 374726 | 410363 | 142355 | 429664 |
| | 448723 | 406356 | 437448 | 435083 |
| | 450543 | 374274 | 329318 | 435561 |
| | 326311 | 326772 | 76950 | 126534 |

368415 374511
 366267 365711
 371350 191670
 348628
 430611
 328689

MAINTENANCE FEE PAYMENT

Claimant Name: Road Runner Prospectors Club
 Address: PO Box 56804 / AGENT BOB
 City: PHX State: AZ Zip: 85079 HOVA
 Telephone: 602-818-0835
 E-mail address: _____
 Signature: [Signature]

328593
 371802
 RECEIVED
 AZ STATE OFFICE
 2018 AUG 22 P 2:27
 PHOENIX, ARIZONA
 BLM
 Date
 Stamp

Check here if this is a change of address.

| LINE NO. | AMC NUMBER | CLAIM/SITE NAME | COUNTY RECORDER DATA (If available) | TWP | RNG | SEC |
|----------|------------|-----------------|-------------------------------------|-----|-----|-----|
| 1 | 374514 | CATCEN LISA | | | | |
| 2 | | | | | | |
| 3 | | (SEE LIST) | | | | |
| 4 | | | | | | |
| 5 | | | | | | |
| 6 | | | | | | |
| 7 | | | | | | |
| 8 | | | | | | |
| 9 | | | | | | |
| 10 | | | | | | |

List additional claims on Form MCF114.

Bureau of Land Management
 Arizona State Office
www.blm.gov/az/

No. of Claims*: 283 x \$155 = 43865
 Check No: 9459 Init. PER
 Receipt No.: 4241954
 For BLM Use Only

* \$155 per lode mining claim, mill site, or tunnel site; and \$155 for each 20 acres or portion thereof for each placer mining claim.

Form: MCF112
 Revised July 2014

This form is available from the Arizona Geological Survey and may be reproduced.

ENTERED
 AUG 28 2018
 BY: RAM

RRPC Master Claims List as of September 1, 2018

\$ 43,865 <<Total Projected Maintenance Fee for 2018

283 \$ 155.00 <Enter Current Rate

| 272 << Total Claims | | | | | | | | | | | | | | | |
|---------------------|-----|--------|---------------------|---------|-------------------------------------|-----------|-------|-------------|-------------|------------------|------------|--------------|-----------|---------------------|--|
| # | Map | AMC # | Claim Name | County | Cnty Recorder Data Record/Book Page | Township | Range | Section | Total Acres | 20 Acre Segments | Maint. Fee | Lode /Placer | PNF Lands | Original 2012 Acres | Comments |
| 1 | 1 | 374513 | Caitlin Lisa | Yavapai | 4452 917 | 12.5, 13N | 1W | 23,24,35,36 | 20.0 | 1 | \$ 155 | Placer | PNF | 20 | BLM corrected name to Caitlin Lisa |
| 2 | 1 | 374512 | Cole Ryan | Yavapai | 2014-0056442 | 12.5N | 1W | 24 | 18.5 | 1 | \$ 155 | Placer | PNF | 20 | Amended south border to 1320 feet |
| 3 | 1 | 365711 | Diggens Paradise | Yavapai | 3864391 4269 775 | 12.5N | 1W | 26 | 17.1 | 1 | \$ 155 | Placer | PNF | 20 | |
| 4 | 1 | 191670 | Roadrunner #1 | Yavapai | 1514 754 | 12.5N | 1W | 25 | 12.85 | 1 | \$ 155 | Placer | PNF | 12.85 | |
| 5 | 1 | 191671 | Roadrunner #2 | Yavapai | 1514 756 | 12.5N | 1W | 25 | 20 | 1 | \$ 155 | Placer | PNF | 20 | |
| 6 | 1 | 348628 | Vira Anne 1 | Yavapai | 2015-0008296 | 12.5N | 1W | 27 | 17.3 | 1 | \$ 155 | Placer | PNF | 40 | Amended north border to 1320 feet |
| 7 | 1 | 430611 | Vira Anne 2 | Yavapai | 2014-0008298 | 12.5N | 1W | 27 | 16.50 | 1 | \$ 155 | Placer | PNF | New | |
| 8 | 2 | 328703 | Ceedee #1 | Yavapai | 2746 703 | 8N | 1W | 5 | 20 | 1 | \$ 155 | Placer | PNF | 20 | |
| 9 | 2 | 328593 | Ceedee #2 | Yavapai | 2742 961 | 8N | 1W | 5 | 20 | 1 | \$ 155 | Placer | PNF | 20 | |
| 10 | 2 | 328594 | Ceedee #3 | Yavapai | 2742 963 | 8N | 1W | 5 | 20 | 1 | \$ 155 | Placer | PNF | 20 | |
| 11 | 2 | 328595 | Ceedee #4 | Yavapai | 2742 965 | 8N | 1W | 5 | 20 | 1 | \$ 155 | Placer | PNF | 20 | |
| 12 | 2 | 328704 | Ceedee #5 | Yavapai | 2746 705 | 8N | 1W | 5 | 20 | 1 | \$ 155 | Placer | PNF | 20 | |
| 13 | 2 | 328597 | Ceedee #7 | Yavapai | 2742 969 | 8N | 1W | 4 | 20 | 1 | \$ 155 | Placer | PNF | 20 | |
| 14 | 2 | 328598 | Ceedee #8 | Yavapai | 2742 971 | 8N | 1W | 4 | 20 | 1 | \$ 155 | Placer | PNF | 20 | |
| 15 | 3 | 374511 | Carolyn D | Yavapai | 4444 69 | 13N | 3W | 29 | 20.0 | 1 | \$ 155 | Placer | PNF | 20 | |
| 16 | 3 | 371802 | Happy Times | Yavapai | 4390 621 | 13N | 3W | 29, 32 | 20 | 1 | \$ 155 | Placer | PNF | 20 | |
| 17 | 3 | 368415 | Jacks Hideaway | Yavapai | 4308 863 | 13N | 3W | 29 | 20 | 1 | \$ 155 | Placer | PNF | 20 | |
| 18 | 3 | 366268 | Renee's Best Chance | Yavapai | 4281 507 | 13N | 3W | 32 | 20 | 1 | \$ 155 | Placer | PNF | 20 | |
| 19 | 3 | 371803 | Saddle Tramps | Yavapai | 4390 622 | 13N | 3W | 29 | 20 | 1 | \$ 155 | Placer | PNF | 20 | |
| 20 | 3 | 366270 | Stuck Duck | Yavapai | 4281 506 | 13N | 3W | 32 | 20 | 1 | \$ 155 | Placer | PNF | 20 | |
| 21 | 3 | 371350 | Wilgers Wish | Yavapai | 4372 442 | 13N | 3W | 32 | 20 | 1 | \$ 155 | Placer | PNF | 20 | |
| 22 | 4 | 96051 | JDR #1 | Yavapai | 1267 825 | 12.5N | 2W | 21 | 20 | 1 | \$ 155 | Placer | PNF | 20 | |
| 23 | 4 | 96052 | JDR #2 | Yavapai | 1267 827 | 12.5N | 2W | 21 | 20 | 1 | \$ 155 | Placer | PNF | 20 | |
| 24 | 4 | 96053 | JDR #3 | Yavapai | 1267 829 | 12.5N/13N | 2W/2W | 21/33 | 20 | 1 | \$ 155 | Placer | PNF | 20 | |
| 25 | 5 | 451090 | Chuck's Corner | Yavapai | 2018-0022976 | 9.5 N | 2E | 28/29 | 20 | 1 | \$ 155 | Placer | | New | May-18 |
| 26 | 5 | 328705 | Genes Dream | Yavapai | 2746 707 | 9.5N | 2E | 20, 21 | 20 | 1 | \$ 155 | Placer | | 2.26 | |
| 27 | 5 | 362558 | Holly Marie | Yavapai | 3769442 4190 312 | 9.5N | 2E | 20, 21 | 11.45 | 1 | \$ 155 | Placer | | 2.26 | |
| 28 | 5 | 429703 | Janet Lynn 2-1 | Yavapai | 2014-0040485 | 10N | 1E | 12 | 20 | 1 | \$ 155 | Placer | PNF | New | |
| 29 | 5 | 435087 | Janet Lynn 2-2 | Yavapai | 2015-0052258 | 10N | 1E | 12, 13 | 15 | 1 | \$ 155 | Placer | PNF | New | |
| 30 | 5 | 435088 | Janet Lynn 2-3 | Yavapai | 2015-0052259 | 10N | 1E | 12, 13 | 15 | 1 | \$ 155 | Placer | PNF | New | |
| 31 | 5 | 435569 | Laura Kay 1-1 | Yavapai | 2015-0055540 | 10N | 1E | 12 | 20 | 1 | \$ 155 | Placer | PNF | New | |
| 32 | 5 | 435570 | Laura Kay 1-2 | Yavapai | 2015-0055541 | 10N | 1E | 12 | 20 | 1 | \$ 155 | Placer | PNF | New | |
| 33 | 5 | 435571 | Laura Kay 1-3 | Yavapai | 2015-0055542 | 10N | 1E | 12 | 20 | 1 | \$ 155 | Placer | PNF | New | |
| 34 | 5 | 126538 | Mandala 10 | Yavapai | 1371 343 | 10N | 2E | 31 | 20 | 1 | \$ 155 | Placer | | 20 | |
| 35 | 5 | 129334 | Mandala 12 | Yavapai | 1376 706 | 10N | 2E | 30 | 20 | 1 | \$ 155 | Placer | | 27.95 | Amended to 20 acres 08/14. |
| 36 | 5 | 157621 | Mandala 14 | Yavapai | 1437 981 | 10N | 2E | 30 | 20 | 1 | \$ 155 | Placer | | 20 | |
| 37 | 5 | 102389 | Mandala 2 & 3 | Yavapai | 1293 289 | 10N | 2E | 30 | 20 | 1 | \$ 155 | Placer | | 40 | |
| 38 | 5 | 126535 | Mandala 7 | Yavapai | 1371 337 | 10N | 2E | 30 | 20 | 1 | \$ 155 | Placer | | 20 | |
| 39 | 5 | 126536 | Mandala 8 | Yavapai | 1371 339 | 10N | 2E | 30 | 20 | 1 | \$ 155 | Placer | | 20 | |
| 40 | 5 | 126537 | Mandala 9 | Yavapai | 1371 341 | 10N | 2E | 30 | 20 | 1 | \$ 155 | Placer | | 20 | |
| 41 | 5 | 170911 | Wednesday Hope #1 | Yavapai | 1467 691 | 10N | 2E | 31 | 20 | 1 | \$ 155 | Placer | | 20 | |
| 42 | 5 | 11413 | Wednesday Hope #4 | Yavapai | 1015 726, 1799 33, 1569 374 | 9.5N/10N | 2E/2E | 20/32 | 20 | 1 | \$ 155 | Placer | | 20 | |
| 43 | 6 | 329388 | Bad Luck | Yavapai | 2780 912 | 12N | 1W | 14, 23 | 20 | 1 | \$ 155 | Placer | PNF | 20 | |
| 44 | 6 | 235841 | Betty #4 | Yavapai | 1713 778 | 12N | 1W | 14 | 20 | 1 | \$ 155 | Placer | PNF | 20 | |
| 45 | 6 | 235842 | Betty #5 | Yavapai | 1713 780 | 12N | 1W | 14 | 20 | 1 | \$ 155 | Placer | PNF | 20 | |
| 46 | 6 | 174224 | Big Rock #1 | Yavapai | 1469 76 | 12N | 1W | 10, 11 | 20 | 1 | \$ 155 | Placer | PNF | 20 | |
| 47 | 6 | 174225 | Big Rock #2 | Yavapai | 1469 78 | 12N | 1W | 10 | 20 | 1 | \$ 155 | Placer | PNF | 20 | |
| 48 | 6 | 236096 | Gary's Place #1A | Yavapai | 1714 193 | 12N | 1W | 14 | 20 | 1 | \$ 155 | Placer | PNF | 20 | |
| 49 | 6 | 329390 | Good Luck | Yavapai | 2780 916 | 12N | 1W | 23, 24 | 20 | 1 | \$ 155 | Placer | PNF | 20 | |
| 50 | 6 | 329391 | Great Luck | Yavapai | 2780 918 | 12N | 1W | 24 | 20 | 1 | \$ 155 | Placer | PNF | 20 | |
| 51 | 6 | 329389 | No Luck | Yavapai | 2780 914 | 12N | 1W | 23 | 20 | 1 | \$ 155 | Placer | PNF | 20 | |
| 52 | 6 | 364821 | Ray's Right Place | Yavapai | 3837647 4247 553 | 12N | 1W | 24 | 17.0 | 1 | \$ 155 | Placer | PNF | 40 | BLM corrected their records to 17 acres |
| 53 | 7 | 366267 | Cobi's Gold | Yavapai | 4281 505 | 11.5N | 1E | 19 | 20 | 1 | \$ 155 | Placer | PNF | 20 | |
| 54 | 7 | 427326 | Rexs' Place | Yavapai | 4914 661 | 11.5N | 1E | 30 | 20 | 1 | \$ 155 | Placer | PNF | 20 | |
| 55 | 7 | 366269 | Rough Road | Yavapai | 4281 503 | 11.5N | 1E | 30 | 20 | 1 | \$ 155 | Placer | PNF | 20 | |
| 56 | 7 | 366271 | Tegan's Bank | Yavapai | 4281 504 | 11.5N | 1E | 30 | 20 | 1 | \$ 155 | Placer | PNF | 20 | |
| 57 | 7 | 89420 | Wolf #1 | Yavapai | 0961 673, 90 203541 | 11.5N | 1E | 31 | 20 | 1 | \$ 155 | Placer | PNF | 20 | Quit Claim Deed to RR is recorded in Maricopa County |
| 58 | 7 | 89421 | Wolf #2 | Yavapai | 0961 674, 2207 41 | 11.5N | 1E | 31 | 20 | 1 | \$ 155 | Placer | PNF | 20 | |
| 59 | 7 | 89422 | Wolf #3 | Yavapai | 0961 675, 2207 41 | 11.5N | 1E | 31 | 20 | 1 | \$ 155 | Placer | PNF | 20 | |
| 60 | 7 | 89423 | Wolf #4 | Yavapai | 0961 676, 2207 41 | 11.5N/11N | 1E/1E | 31/6 | 20 | 1 | \$ 155 | Placer | PNF | 20 | |
| 61 | 7 | 300332 | Wolf #5 | Yavapai | 2208 526 | 11.5N | 1E | 31 | 20 | 1 | \$ 155 | Placer | PNF | 20 | |
| 62 | 7 | 300333 | Wolf #6 | Yavapai | 2208 524 | 11N | 1E | 5, 6 | 20 | 1 | \$ 155 | Placer | PNF | 20 | |
| 63 | 8 | 82213 | Bean Bag #1 | Yavapai | 0965 338, 1252 276 | 12N | 1W | 28 | 20 | 1 | \$ 155 | Placer | PNF | 20 | 1252 276 Added |
| 64 | 8 | 435561 | Bean Bag 2-1 | Yavapai | 2015-0055543 | 10N | 2E | 30 | 20 | 1 | \$ 155 | Placer | PNF | New | |

RECEIVED
 MARICOPA STATE OFFICE
 PHOENIX, ARIZONA
 2018 AUG 22 PM 2:21

RRPC Master Claims List as of September 1, 2018

\$ 43,865 <<Total Projected Maintenance Fee for 2018

283 \$ 155.00 <Enter Current Rate

272 << Total Claims

| # | Map | AMC # | Claim Name | County | Cnty Recorder Data Record/Book Page | Township | Range | Section | Total Acres | 20 Acre Segments | Maint. Fee | Lode /Placer | PNF Lands | Original 2012 Acres | Comments |
|-----|-----|--------|-----------------------|----------|--|----------|-------|-------------|----------------|---------------------|------------|-----------------|--------------|------------------------|---|
| 65 | 8 | 435562 | Bean Bag 2-2 | Yavapai | 2015-0055544 | 10N | 2E | 30 | 20 | 1 | \$ 155 | Placer | PNF | New | |
| 66 | 8 | 328605 | Burro #1 | Yavapai | 2742 987 | 12N | 1W | 33 | 20 | 1 | \$ 155 | Placer | PNF | 20 | |
| 67 | 8 | 328606 | Burro #2 | Yavapai | 2742 985 | 11N | 1W | 4 | 20 | 1 | \$ 155 | Placer | PNF | 20 | |
| 68 | 8 | 142356 | Donkey Mine #4 | Yavapai | 1422 292 | 12N | 1W | 33 | 20 | 1 | \$ 155 | Lode | PNF | 20 | Filed as lode claim |
| 69 | 8 | 437451 | Goodwin 1-1 | Yavapai | 2016-0019094 | 12N | 1W | 28, 33 | 20 | 1 | \$ 155 | Placer | PNF | 31.68 | Amended to 20 acres March 2016 |
| 70 | 8 | 437452 | Goodwin 1-2 | Yavapai | 2016-0019093 | 12N | 1W | 33 | 20 | 1 | \$ 155 | Placer | PNF | | New filing, 10 acre - March 2016 |
| 71 | 8 | 329318 | Mercer's Place | Yavapai | 2777 216, 3288 700 | 11N | 1W | 4 | 20 | 1 | \$ 155 | Placer | PNF | 20 | |
| 72 | 8 | 76951 | Merciful Heavens #2 | Yavapai | 1329 344 | 12N/11N | 1W/1W | 33/4 | 20 | 1 | \$ 155 | Placer | PNF | 20 | BLM doesn't show 11N, 1W, 4 |
| 73 | 8 | 313473 | Patriot 1 | Yavapai | 2347 704 | 11N | 1W | 4 | 20 | 1 | \$ 155 | Placer | PNF | 20 | |
| 74 | 8 | 313474 | Patriot 2 | Yavapai | 2347 706 | 11N | 1W | 3, 4 | 20 | 1 | \$ 155 | Placer | PNF | 20 | |
| 75 | 8 | 313475 | Patriot 3 | Yavapai | 2347 708 | 11N | 1W | 3 | 20 | 1 | \$ 155 | Placer | PNF | 20 | |
| 76 | 8 | 313476 | Patriot 4 | Yavapai | 2347 710 | 11N | 1W | 3 | 20 | 1 | \$ 155 | Placer | PNF | 20 | |
| 77 | 8 | 313477 | Patriot 5 | Yavapai | 2347 712 | 11N | 1W | 3 | 20 | 1 | \$ 155 | Placer | PNF | 20 | |
| 78 | 8 | 130489 | Protecto 2 | Yavapai | 1381 826 | 12N | 1W | 33 | 20 | 1 | \$ 155 | Lode | PNF | 20 | Filed as lode claim |
| 79 | 9 | 329394 | Bonny | Yavapai | 2780 924 | 12N | 1W | 30 | 20 | 1 | \$ 155 | Placer | PNF | 20 | |
| 80 | 9 | 331455 | Chris #1 | Yavapai | 2919 631 | 12N | 2W | 36 | 20.0 | 1 | \$ 155 | Placer | PNF | 20 | |
| 81 | 9 | 329392 | Clinton | Yavapai | 2780 920 | 12N/12N | 1W/2W | 30/25 | 20 | 1 | \$ 155 | Placer | PNF | 20 | |
| 82 | 9 | 329393 | Clyde | Yavapai | 2780 922 | 12N/12N | 1W/2W | 30/25 | 20 | 1 | \$ 155 | Placer | PNF | 20 | |
| 83 | 9 | 356382 | Ducbill #1 | Yavapai | 27429 1402 63 | 12N | 1W | 17 | 20 | 1 | \$ 155 | Lode | PNF | 20 | Filed as lode claim |
| 84 | 9 | 356383 | Ducbill #2 | Yavapai | 27430 1402 65 | 12N | 1W | 17 | 20 | 1 | \$ 155 | Lode | PNF | 20 | Filed as lode claim |
| 85 | 9 | 95198 | Gold Palace I | Yavapai | 1256 447 | 12N | 1W | 19 | 20 | 1 | \$ 155 | Placer | PNF | 20 | |
| 86 | 9 | 95199 | Gold Palace II | Yavapai | 1256 450 | 12N | 1W | 19 | 20 | 1 | \$ 155 | Placer | PNF | 20 | |
| 87 | 9 | 95200 | Gold Palace III | Yavapai | 1256 453 | 12N | 1W | 19 | 20 | 1 | \$ 155 | Placer | PNF | 20 | |
| 88 | 9 | 95201 | Gold Palace IV | Yavapai | 1256 456 | 12N | 1W | 19 | 20 | 1 | \$ 155 | Placer | PNF | 20 | |
| 89 | 9 | 95202 | Gold Palace V | Yavapai | 1256 459 | 12N | 1W | 19 | 20 | 1 | \$ 155 | Placer | PNF | 20 | |
| 90 | 9 | 95203 | Gold Palace VI | Yavapai | 1256 462 | 12N | 1W | 19 | 20 | 1 | \$ 155 | Placer | PNF | 20 | BLM shows More Than Lots of Rock |
| 91 | 9 | 95204 | Gold Palace VII | Yavapai | 1256 465 | 12N | 1W | 19 | 20 | 1 | \$ 155 | Placer | PNF | 20 | BLM shows Lots of Rock |
| 92 | 9 | 95205 | Gold Palace VIII | Yavapai | 1256 468 | 12N | 1W | 30 | 20 | 1 | \$ 155 | Placer | PNF | 20 | |
| 93 | 9 | 358378 | Hidden Treasure | Yavapai | 3633816 4076 796 | 12N/12N | 1W/2W | 30,31/25,36 | 20 | 1 | \$ 155 | Placer | PNF | 20 | |
| 94 | 10 | 358379 | Aquarius Ext. West #1 | Yavapai | 3633817 4076 797 | 10N | 2E | 18 | 20 | 1 | \$ 155 | Placer | | 20 | |
| 95 | 10 | 358380 | Aquarius Ext. West #2 | Yavapai | 3633818 4076 798 | 10N | 2E | 18 | 20 | 1 | \$ 155 | Placer | | 20 | |
| 96 | 10 | 358381 | Aquarius Ext. West #3 | Yavapai | 3633819 4076 799 | 10N | 2E | 18 | 20 | 1 | \$ 155 | Placer | | 20 | |
| 97 | 10 | 358382 | Aquarius Ext. West #4 | Yavapai | 3633820 4076 800 | 10N | 2E | 18 | 20 | 1 | \$ 155 | Placer | | 20 | |
| 98 | 10 | 48976 | Aquarius #1 | Yavapai | 0801 192 *** | 10N | 2E | 7 | 20 | 1 | \$ 155 | Lode | | 20 | Can not find Location Notice, Filed as lode claim |
| 99 | 10 | 62606 | Aquarius #2 | Yavapai | 1001 437 | 10N | 2E | 7 | 20 | 1 | \$ 155 | Placer | | 20 | |
| 100 | 10 | 48977 | Aquarius #3 | Yavapai | 0801 194 *** | 10N | 2E | 7, 18 | 20 | 1 | \$ 155 | Placer | | 20 | Can not find Location Notice |
| 101 | 10 | 435083 | Aquarius Extension 1 | Yavapai | 2015-0052260 | 10N | 2E | 18 | 20 | 1 | \$ 155 | Placer | | New | |
| 102 | 10 | 435084 | Aquarius Extension 2 | Yavapai | 2015-0052261 | 10N | 2E | 18 | 20 | 1 | \$ 155 | Placer | | New | |
| 103 | 10 | 435085 | Aquarius Extension 3 | Yavapai | 2015-0052262 | 10N | 2E | 18 | 20 | 1 | \$ 155 | Placer | | New | |
| 104 | 10 | 435086 | Aquarius Extension 4 | Yavapai | 2015-0052263 | 10N | 2E | 18 | 20 | 1 | \$ 155 | Placer | | New | |
| 105 | 11 | 254412 | Hinny | Yavapai | 4069 601, 1341 96, 1807 656 | 11N | 1E | 34 | 16.22 | 1 | \$ 155 | Placer | PNF | 120 | Amended to 16.22 acres 08/14. (Gulch Placer) |
| 106 | 11 | 254410 | Jackass | Yavapai | 4069 605 | 11N | 1E | 34, 35 | 19.97 | 1 | \$ 155 | Placer | PNF | 40 | Amended to 19.97 acres 08/14. |
| 107 | 11 | 254411 | Jenney | Yavapai | 4069 602 | 11N | 1E | 34 | 20 | 1 | \$ 155 | Placer | PNF | 20 | Revised with latest amended claim filing. |
| 108 | 11 | 328742 | Red Bird #11 | Yavapai | 2754 072 | 10N | 1E | 1 | 40 | 2 | \$ 310 | Placer | PNF | 140 | OK - 7 person association |
| 109 | 11 | 74736 | Sharon Lee #3 | Yavapai | 0912 399 | 10N | 1E | 2 | 20 | 1 | \$ 155 | Placer | PNF | 160 | |
| 110 | 11 | 429736 | Sharon Lee 1-1 | Yavapai | 2014-0040492 | 11N | 1E | 35, 36 | 20 | 1 | \$ 155 | Placer | PNF | New | |
| 111 | 11 | 429737 | Sharon Lee 1-2 | Yavapai | 2014-0040493 | 11N | 1E | 35, 36 | 20 | 1 | \$ 155 | Placer | PNF | New | |
| 112 | 11 | 429738 | Sharon Lee 1-3 | Yavapai | 2014-0040494 | 11N | 1E | 35, 36 | 20 | 1 | \$ 155 | Placer | PNF | New | |
| 113 | 11 | 429739 | Sharon Lee 1-4 | Yavapai | 2014-0040495 | 11N | 1E | 35, 36 | 20 | 1 | \$ 155 | Placer | PNF | New | |
| 114 | 11 | 429740 | Sharon Lee 2-1 | Yavapai | 2014-0040496 | 11N | 1E | 35 | 20 | 1 | \$ 155 | Placer | PNF | New | |
| 115 | 11 | 429741 | Sharon Lee 2-2 | Yavapai | 2014-0040497 | 11N | 1E | 35 | 20 | 1 | \$ 155 | Placer | PNF | New | |
| 116 | 11 | 429742 | Sharon Lee 2-3 | Yavapai | 2014-0040498 | 11N | 1E | 35 | 20 | 1 | \$ 155 | Placer | PNF | New | |
| 117 | 11 | 429743 | Sharon Lee 4-1 | Yavapai | 2014-0040499 | 10N | 1E | 1, 2 | 20 | 1 | \$ 155 | Placer | PNF | New | |
| 118 | 11 | 429744 | Sharon Lee 4-2 | Yavapai | 2014-0040500 | 10N | 1E | 1, 2 | 20 | 1 | \$ 155 | Placer | PNF | New | |
| 119 | 11 | 429745 | Sharon Lee 4-3 | Yavapai | 2014-0040501 | 10N | 1E | 1, 2 | 20 | 1 | \$ 155 | Placer | PNF | New | |
| 120 | 11 | 429746 | Sharon Lee 4-4 | Yavapai | 2014-0040502 | 10N | 1E | 1, 2 | 20 | 1 | \$ 155 | Placer | PNF | New | |
| 121 | 11 | 429747 | Sharon Lee 4-5 | Yavapai | 2014-0040503 | 10N | 1E | 1, 2 | 20 | 1 | \$ 155 | Placer | PNF | New | |
| 122 | 11 | 429748 | Sharon Lee 4-6 | Yavapai | 2014-0040504 | 10N | 1E | 1, 2 | 20 | 1 | \$ 155 | Placer | PNF | New | |
| 123 | 12 | 326313 | Carrie #3 | Maricopa | 93 0174160 | 7N | 3W | 30 | 20 | 1 | \$ 155 | Placer | | 20 | |
| 124 | 12 | 326314 | Carrie #4 | Maricopa | 93 0174159 | 7N | 3W | 30 | 20 | 1 | \$ 155 | Placer | | 20 | |
| 125 | 12 | 437934 | Carrie 1-1 | Maricopa | 2016-0242927 | 7N | 3W | 31 | 20 | 1 | \$ 155 | Placer | | 40 | Amended to 20 acres March 2016 |
| 126 | 12 | 437449 | Carrie 1-2 | Maricopa | 2016-0222160 | 7N | 3W | 31 | 20 | 1 | \$ 155 | Placer | | | New filing - March 2016 |
| 127 | 12 | 326312 | Carrie 2-1 | Maricopa | 2016-0222161 | 7N | 3W | 31 | 20 | 1 | \$ 155 | Placer | | 40 | Amended to 20 acres March 2016 |
| 128 | 12 | 437450 | Carrie 2-2 | Maricopa | 2016-0222162 | 7N | 3W | 31 | 20 | 1 | \$ 155 | Placer | | | New filing - March 2016 |

RECEIVED
 PHOENIX, ARIZONA
 2018 AUG 22 PM 2:21
 STATE OFFICE

RRPC Master Claims List as of September 1, 2018

\$ 43,865 <<Total Projected Maintenance Fee for 2018

283 \$ 155.00 <Enter Current Rate

| # | Map | AMC # | Claim Name | County | Cnty Recorder Data Record/Book Page | Township | Range | Section | Total Acres | 20 Acre Segments | Maint. Fee | Lode /Placer | PNF Lands | Original 2012 Acres | Comments |
|-----|-----|--------|---------------------|----------|-------------------------------------|----------|-------|---------|-------------|------------------|------------|--------------|-----------|---------------------|--------------------------------|
| 129 | 12 | 291104 | Cas #2 | Maricopa | 92 0366284, 88 598383 | 7N | 3W | 29 | 20 | 1 | \$ 155 | Placer | | 20 | |
| 130 | 12 | 410363 | Cass # 10 | Maricopa | 11 0735632 | 7N | 3W | 29 | 20 | 1 | \$ 155 | Placer | | 20 | |
| 131 | 12 | 328698 | Cass No. 4 | Maricopa | 93 0885578 | 7N | 3W | 29 | 20 | 1 | \$ 155 | Placer | | 20 | |
| 132 | 12 | 328699 | Cass No. 5 | Maricopa | 93 0885577 | 7N | 3W | 29 | 20 | 1 | \$ 155 | Placer | | 20 | |
| 133 | 12 | 328700 | Cass No. 6 | Maricopa | 93 0885576 | 7N | 3W | 29 | 20 | 1 | \$ 155 | Placer | | 20 | |
| 134 | 12 | 328701 | Cass No. 7 | Maricopa | 93 0885575 | 7N | 3W | 29 | 20 | 1 | \$ 155 | Placer | | 20 | |
| 135 | 12 | 328702 | Cass No. 8 | Maricopa | 93 0885574 | 7N | 3W | 29 | 20 | 1 | \$ 155 | Placer | | 20 | |
| 136 | 12 | 406356 | Cass No. 9 | Maricopa | 11 0623988 | 7N | 3W | 29 | 20 | 1 | \$ 155 | Placer | | 20 | |
| 137 | 12 | 374275 | Charles' Dream | Maricopa | 06 1491112 | 7N | 3W | 20 | 20 | 1 | \$ 155 | Placer | | 20 | |
| 138 | 12 | 329800 | Gypsy Moth 1 | Maricopa | 94 0218517 | 7N | 3W | 21 | 20 | 1 | \$ 155 | Placer | | 20 | |
| 139 | 12 | 329801 | Gypsy Moth 2 | Maricopa | 94 0218518 | 7N | 3W | 21 | 20 | 1 | \$ 155 | Placer | | 20 | |
| 140 | 12 | 326325 | Jake #3 | Maricopa | 93 0174145 | 7N | 3W | 29 | 20 | 1 | \$ 155 | Placer | | 40 | Amended to 20 acres. |
| 141 | 12 | 429695 | Jake 1-1 | Maricopa | 2014-0584266 | 7N | 3W | 29 | 20 | 1 | \$ 155 | Placer | | New | |
| 142 | 12 | 429696 | Jake 1-2 | Maricopa | 2014-0584267 | 7N | 3W | 29 | 20 | 1 | \$ 155 | Placer | | New | |
| 143 | 12 | 429697 | Jake 1-3 | Maricopa | 2014-0584268 | 7N | 3W | 29 | 20 | 1 | \$ 155 | Placer | | New | |
| 144 | 12 | 429698 | Jake 1-4 | Maricopa | 2014-0584269 | 7N | 3W | 29 | 20 | 1 | \$ 155 | Placer | | New | |
| 145 | 12 | 429699 | Jake 2-1 | Maricopa | 2014-0584270 | 7N | 3W | 29 | 20 | 1 | \$ 155 | Placer | | New | |
| 146 | 12 | 429700 | Jake 2-2 | Maricopa | 2014-0584271 | 7N | 3W | 29 | 20 | 1 | \$ 155 | Placer | | New | |
| 147 | 12 | 429701 | Jake 2-3 | Maricopa | 2014-0584272 | 7N | 3W | 29 | 20 | 1 | \$ 155 | Placer | | New | |
| 148 | 12 | 429702 | Jake 2-4 | Maricopa | 2014-0584273 | 7N | 3W | 29 | 20 | 1 | \$ 155 | Placer | | New | |
| 149 | 12 | 333426 | La Siesta #1 | Maricopa | 95 0185054 | 7N | 3W | 30 | 20 | 1 | \$ 155 | Placer | | 20 | |
| 150 | 12 | 333427 | La Siesta #3 | Maricopa | 95 0185055 | 7N | 3W | 30 | 20 | 1 | \$ 155 | Placer | | 20 | |
| 151 | 12 | 374274 | Lori's Place | Maricopa | 06 1491113 | 7N | 3W | 20 | 20 | 1 | \$ 155 | Placer | | 20 | |
| 152 | 12 | 326319 | Pat | Maricopa | 93 0174152 | 7N | 3W | 31 | 20 | 1 | \$ 155 | Placer | | 20 | |
| 153 | 12 | 326316 | Pennyweight #2 | Maricopa | 93 0174156 | 7N | 3W | 29 | 20 | 1 | \$ 155 | Placer | | 40 | Amended to 20 acres 08/14. |
| 154 | 12 | 326315 | Pennyweight 1-1 | Maricopa | 2016-0222163 | 7N | 3W | 29 | 20 | 1 | \$ 155 | Placer | | 40 | Amended to 20 acres March 2016 |
| 155 | 12 | 437453 | Pennyweight 1-2 | Maricopa | 2016-0222164 | 7N | 3W | 29 | 20 | 1 | \$ 155 | Placer | | | New filing - March 2016 |
| 156 | 12 | 326327 | Pilgrim #1 | Maricopa | 93 0174153 | 7N | 3W | 31 | 20 | 1 | \$ 155 | Placer | | 20 | |
| 157 | 12 | 429724 | Randy B 1 | Maricopa | 2014-0584262 | 7N | 3W | 30 | 20 | 1 | \$ 155 | Placer | | New | |
| 158 | 12 | 429725 | Randy B 2 | Maricopa | 2014-0584263 | 7N | 3W | 30 | 20 | 1 | \$ 155 | Placer | | New | |
| 159 | 12 | 429726 | Randy B 3 | Maricopa | 2014-0584264 | 7N | 3W | 30 | 20 | 1 | \$ 155 | Placer | | New | |
| 160 | 12 | 429727 | Randy B 4 | Maricopa | 2014-0584265 | 7N | 3W | 30 | 20 | 1 | \$ 155 | Placer | | New | |
| 161 | 12 | 326772 | Range Bull # 1 | Maricopa | 93 0362063 | 7N | 3W | 21 | 20 | 1 | \$ 155 | Placer | | 20 | Actually 40 acres. |
| 162 | 12 | 247112 | Sando | Maricopa | 85 0559653 | 7N | 3W | 28 | 20 | 1 | \$ 155 | Placer | | 20 | |
| 163 | 13 | 350275 | Gold Bug | Maricopa | 98 0535738 | 6N | 6W | 26 | 20 | 1 | \$ 155 | Placer | | 20 | |
| 164 | 13 | 350276 | Gold Master | Maricopa | 98 0535739 | 6N | 6W | 26 | 20 | 1 | \$ 155 | Placer | | 20 | |
| 165 | 13 | 350278 | Mine Lab | Maricopa | 98 0535741 | 6N | 6W | 26 | 20 | 1 | \$ 155 | Placer | | 20 | |
| 166 | 13 | 331233 | Red Basin #1 | Maricopa | 14 0184527 | 6N | 6W | 26 | 145.45 | 8 | \$ 1,240 | Placer | | 160 | OK - 8 person association |
| 167 | 13 | 350279 | Webster Mine | Maricopa | 98 0535742 | 6N | 6W | 26 | 20 | 1 | \$ 155 | Placer | | 20 | |
| 168 | 13 | 350280 | Whistler | Maricopa | 98 0535743 | 6N | 6W | 26 | 20 | 1 | \$ 155 | Placer | | 20 | |
| 169 | 13 | 350281 | Wickenburg | Maricopa | 98 0535744 | 6N | 6W | 26 | 20 | 1 | \$ 155 | Placer | | 20 | |
| 170 | 14 | 321061 | Lefty #2 | Yavapai | 2479 560 | 8N | 1E | 30 | 20 | 1 | \$ 155 | Placer | | 20 | BLM shows efty #2 |
| 171 | 14 | 314631 | RR-Humbug #3 | Yavapai | 2360 845 | 8N | 1E | 29, 30 | 20 | 1 | \$ 155 | Placer | | 60 | Amended to 20 acres. 08/14. |
| 172 | 14 | 429728 | RR-Humbug 1-1 | Yavapai | 2014-0040505 | 8N | 1E | 31 | 20 | 1 | \$ 155 | Placer | | New | |
| 173 | 14 | 429729 | RR-Humbug 1-2 | Yavapai | 2014-0040506 | 8N | 1E | 31 | 20 | 1 | \$ 155 | Placer | | New | |
| 174 | 14 | 429730 | RR-Humbug 1-3 | Yavapai | 2014-0040507 | 8N | 1E | 31 | 20 | 1 | \$ 155 | Placer | | New | |
| 175 | 14 | 429731 | RR-Humbug 1-4 | Yavapai | 2014-0040508 | 8N | 1E | 31 | 20 | 1 | \$ 155 | Placer | | New | |
| 176 | 14 | 429732 | RR-Humbug 1-5 | Yavapai | 2014-0040509 | 8N | 1E | 31 | 20 | 1 | \$ 155 | Placer | | New | |
| 177 | 14 | 429733 | RR-Humbug 1-6 | Yavapai | 2014-0040510 | 8N | 1E | 31 | 20 | 1 | \$ 155 | Placer | | New | |
| 178 | 14 | 429734 | RR-Humbug 2-1 | Yavapai | 2014-0040511 | 8N | 1E | 31 | 20 | 1 | \$ 155 | Placer | | New | |
| 179 | 14 | 429735 | RR-Humbug 2-2 | Yavapai | 2014-0040512 | 8N | 1E | 31 | 20 | 1 | \$ 155 | Placer | | New | |
| 180 | 15 | 244561 | Gold Dust #2 | Yavapai | 1781 510 | 11N | 3E | 30 | 6.88 | 1 | \$ 155 | Placer | | 6.88 | |
| 181 | 15 | 196365 | Turkey Buzzard #1 | Yavapai | 1529 712 | 11N | 3E | 30 | 13.77 | 1 | \$ 155 | Placer | | 13.77 | |
| 182 | 15 | 258456 | Turkey Buzzard #2 | Yavapai | 1838 872 | 11N | 3E | 30 | 20 | 1 | \$ 155 | Placer | | 20 | |
| 183 | 15 | 258457 | Turkey Buzzard #3 | Yavapai | 1838 874 | 11N | 3E | 30 | 20 | 1 | \$ 155 | Placer | | 20 | |
| 184 | 15 | 258458 | Turkey Buzzard #4 | Yavapai | 1838 876 | 11N | 3E | 30 | 20 | 1 | \$ 155 | Placer | | 20 | |
| 185 | 15 | 258455 | Turkey Buzzard Ext. | Yavapai | 1838 870 | 11N | 3E | 30 | 10 | 1 | \$ 155 | Placer | | 10 | |
| 186 | 16 | 446011 | Luck Eleven | Maricopa | 2017-0736189 | 7N | 5W | 9 | 20 | 1 | \$ 155 | Placer | | 20 | |
| 187 | 16 | 430534 | Lucky Eight | Maricopa | 2015-0077601 | 7N | 5W | 3 | 20 | 1 | \$ 155 | Placer | | 20 | |
| 188 | 16 | 430535 | Lucky Nine | Maricopa | 2015-0077602 | 7N | 5W | 3 | 20 | 1 | \$ 155 | Placer | | 20 | |
| 189 | 16 | 411385 | Lucky Seven | Maricopa | 2015-0047844 | 7N | 5W | 3 | 20 | 1 | \$ 155 | Placer | | 20 | |
| 190 | 16 | 446010 | Lucky Ten | Maricopa | 2017-0736188 | 7N | 5W | 4 | 20 | 1 | \$ 155 | Placer | | 20 | |
| 191 | 17 | 407030 | Carols Corner | Maricopa | 11 0623989 | 7N | 3W | 18 | 20 | 1 | \$ 155 | Placer | | 20 | |
| 192 | 17 | 410364 | Golden Sands | Maricopa | 11 073563 | 7N | 3W | 18 | 20 | 1 | \$ 155 | Placer | | 20 | |

RECEIVED
 MARICOPA STATE OFFICE
 PHOENIX, ARIZONA
 2018 AUG 22 PM 2:21

RRPC Master Claims List as of September 1, 2018

\$ 43,865 <<Total Projected Maintenance Fee for 2018

283 \$ 155.00 <Enter Current Rate

| 2/2 | << Total Claims | | | | | | | | | | | | | | | | |
|-----|-----------------|--------|-------------------------|----------|-------------------------------------|----------|-------|---------|-------------|------------------|------------|--------------|-----------|---------------------|--|--|--|
| # | Map | AMC # | Claim Name | County | Cnty Recorder Data Record/Book Page | Township | Range | Section | Total Acres | 20 Acre Segments | Maint. Fee | Lode /Placer | PNF Lands | Original 2012 Acres | Comments | | |
| 193 | 17 | 429716 | 7 Ocotillo 1-1 | Maricopa | 2014-0584274 | 7N | 3W | 17, 20 | 20 | 1 | \$ 155 | Placer | | New | | | |
| 194 | 17 | 429717 | Ocotillo 1-2 | Maricopa | 2014-0584275 | 7N | 3W | 17, 20 | 20 | 1 | \$ 155 | Placer | | New | | | |
| 195 | 17 | 429718 | Ocotillo 1-3 | Maricopa | 2014-0584276 | 7N | 3W | 17, 20 | 20 | 1 | \$ 155 | Placer | | New | | | |
| 196 | 17 | 429719 | Ocotillo 1-4 | Maricopa | 2014-0584277 | 7N | 3W | 17, 20 | 20 | 1 | \$ 155 | Placer | | New | | | |
| 197 | 17 | 429720 | Ocotillo 2-1 | Maricopa | 2014-0584278 | 7N | 3W | 17, 18 | 20 | 1 | \$ 155 | Placer | | New | | | |
| 198 | 17 | 429721 | Ocotillo 2-2 | Maricopa | 2014-0584279 | 7N | 3W | 17, 18 | 20 | 1 | \$ 155 | Placer | | New | | | |
| 199 | 17 | 429722 | Ocotillo 2-3 | Maricopa | 2014-0584280 | 7N | 3W | 17, 18 | 20 | 1 | \$ 155 | Placer | | New | | | |
| 200 | 17 | 429723 | J Ocotillo 2-4 | Maricopa | 2014-0584281 | 7N | 3W | 17, 18 | 20 | 1 | \$ 155 | Placer | | New | | | |
| 201 | 17 | 327930 | J Red Bird # 7 | Maricopa | 93 0897433 | 7N | 3W | 17 | 20 | 1 | \$ 155 | Placer | | 20 | Actually 40 acres. | | |
| 202 | 17 | 327931 | J Red Bird # 8 | Maricopa | 93 0897432 | 7N | 3W | 20 | 20 | 1 | \$ 155 | Placer | | 20 | | | |
| 203 | 17 | 328302 | - Red Bird # 9 | Maricopa | 93 0897431 | 7N | 3W | 17 | 20 | 1 | \$ 155 | Placer | | 140 | Amended to 20 acres 08/14. | | |
| 204 | 17 | 374726 | - Roslyn's Roost | Maricopa | 06 1445012 | 7N | 3W | 17 | 20 | 1 | \$ 155 | Lode | | 20 | Filed as lode claim | | |
| 205 | 18 | 448723 | - Crook City Gold | Yavapai | 2017-0066715 | 12N | 2W | 12 | 20 | 1 | \$ 155 | Placer | | | | | |
| 206 | 18 | 450543 | J Crooks Canyon Gold #4 | Yavapai | 2018-0022975 | 12N | 2W | 12 | 20 | 1 | \$ 155 | Placer | | | | | |
| 207 | 18 | 450544 | J Crooks Canyon Gold #5 | Yavapai | 2018-0022974 | 12N | 2W | 1 | 20 | 1 | \$ 155 | Placer | | | | | |
| 208 | 18 | 448724 | - Venezia Gold | Yavapai | 2017-0066714 | 12N | 2W | 12, 13 | 20 | 1 | \$ 155 | Placer | | | | | |
| 209 | 19 | 326322 | - Double R | Maricopa | 12 0735517 | 6N | 4W | 12 | 80 | 4 | \$ 620 | Placer | | 160 | OK - 5 person association | | |
| 210 | 19 | 329020 | 7 RR #1 | Maricopa | 94 0021782 | 6N | 4W | 1 | 20 | 1 | \$ 155 | Placer | | 20 | | | |
| 211 | 19 | 329021 | RR #2 | Maricopa | 94 0021783 | 6N | 4W | 1 | 20 | 1 | \$ 155 | Placer | | 20 | | | |
| 212 | 19 | 329022 | RR #3 | Maricopa | 94 0021784 | 6N | 4W | 1 | 20 | 1 | \$ 155 | Placer | | 20 | | | |
| 213 | 19 | 329023 | J RR #4 | Maricopa | 94 0021785 | 6N | 4W | 1 | 20 | 1 | \$ 155 | Placer | | 20 | | | |
| 214 | 19 | 339964 | J RR #5 | Maricopa | 96 0488373 | 6N | 4W | 1 | 20 | 1 | \$ 155 | Placer | | 20 | | | |
| 215 | 19 | 339965 | J RR #6 | Maricopa | 96 0488374 | 6N | 4W | 1 | 20 | 1 | \$ 155 | Placer | | 20 | | | |
| 216 | 19 | 364688 | J RR #7 | Maricopa | 05 0477984 | 6N | 4W | 1 | 20 | 1 | \$ 155 | Placer | | 20 | | | |
| 217 | 19 | 364689 | J RR #8 | Maricopa | 05 0477985 | 6N | 4W | 1 | 20 | 1 | \$ 155 | Placer | | 20 | | | |
| 218 | 21 | 64830 | - Catclaw | Yavapai | 0912 239 | 9N | 4W | 6 | 20 | 1 | \$ 155 | Lode | | 20 | Filed as lode claim | | |
| 219 | 21 | 350910 | - Devils Nest AU 12 | Yavapai | 3620 62 | 9N | 4W | 6 | 20 | 1 | \$ 155 | Lode | | 20 | Filed as lode claim | | |
| 220 | 21 | 350907 | - Devils Nest AU 9 | Yavapai | 3620 60 | 9N | 4W | 6 | 20 | 1 | \$ 155 | Lode | | 20 | Filed as lode claim | | |
| 221 | 21 | 251044 | - Faith #3 | Yavapai | 1812 836 | 9N | 5W | 13 | 20 | 1 | \$ 155 | Placer | | 20 | | | |
| 222 | 21 | 350905 | - King Duck II | Yavapai | 4247 552 | 10N/9N | 4W/4W | 31/6 | 20 | 1 | \$ 155 | Lode | | 20 | Filed as lode claim, and BLM shows 4E, sec 6 | | |
| 223 | 21 | 429708 | 7 Leave No Holes 1 | Yavapai | 2014-0040513 | 9N | 5W | 12 | 20 | 1 | \$ 155 | Placer | | New | | | |
| 224 | 21 | 429709 | Leave No Holes 2 | Yavapai | 2014-0040514 | 9N | 5W | 12 | 20 | 1 | \$ 155 | Placer | | New | | | |
| 225 | 21 | 429710 | Leave No Holes 3 | Yavapai | 2014-0040515 | 9N | 5W | 12 | 20 | 1 | \$ 155 | Placer | | New | | | |
| 226 | 21 | 429711 | Leave No Holes 4 | Yavapai | 2014-0040516 | 9N | 5W | 12 | 20 | 1 | \$ 155 | Placer | | New | | | |
| 227 | 21 | 429712 | Leave No Holes 5 | Yavapai | 2014-0040517 | 9N | 5W | 12 | 20 | 1 | \$ 155 | Placer | | New | | | |
| 228 | 21 | 429713 | Leave No Holes 6 | Yavapai | 2014-0040518 | 9N | 5W | 12 | 20 | 1 | \$ 155 | Placer | | New | | | |
| 229 | 21 | 429714 | J Leave No Holes 7 | Yavapai | 2014-0040519 | 9N | 5W | 12 | 20 | 1 | \$ 155 | Placer | | New | | | |
| 230 | 21 | 429715 | J Leave No Holes 8 | Yavapai | 2014-0040520 | 9N | 5W | 12 | 20 | 1 | \$ 155 | Placer | | New | | | |
| 231 | 21 | 350906 | - Little Terry | Yavapai | 4247 551 | 9N | 4W | 6 | 20 | 1 | \$ 155 | Lode | | 20 | Filed as lode claim | | |
| 232 | 21 | 251047 | - Lords Blessing | Yavapai | 1803 415 | 9N | 5W | 13 | 20 | 1 | \$ 155 | Placer | | 20 | | | |
| 233 | 21 | 68531 | - Thomason | Yavapai | 0121 511 | 9N | 4W | 7 | 20 | 1 | \$ 155 | Placer | | 20 | | | |
| 234 | 22 | 429675 | 7 C-6 Placer 1 | La Paz | 2014-02950 | 4N | 20W | 23 | 20 | 1 | \$ 155 | Placer | | New | | | |
| 235 | 22 | 429676 | C-6 Placer 2 | La Paz | 2014-02951 | 4N | 20W | 23 | 20 | 1 | \$ 155 | Placer | | New | | | |
| 236 | 22 | 429677 | C-6 Placer 3 | La Paz | 2014-02952 | 4N | 20W | 23 | 20 | 1 | \$ 155 | Placer | | New | | | |
| 237 | 22 | 429678 | CD7 Placer 1 | La Paz | 2014-02953 | 4N | 20W | 15 | 20 | 1 | \$ 155 | Placer | | New | | | |
| 238 | 22 | 429679 | CD7 Placer 2 | La Paz | 2014-02954 | 4N | 20W | 15 | 20 | 1 | \$ 155 | Placer | | New | | | |
| 239 | 22 | 429680 | CD7 Placer 3 | La Paz | 2014-02955 | 4N | 20W | 15 | 20 | 1 | \$ 155 | Placer | | New | | | |
| 240 | 22 | 429681 | CD7 Placer 4 | La Paz | 2014-02956 | 4N | 20W | 14 | 20 | 1 | \$ 155 | Placer | | New | | | |
| 241 | 22 | 429682 | J CD7 Placer 5 | La Paz | 2014-02957 | 4N | 20W | 23 | 20 | 1 | \$ 155 | Placer | | New | | | |
| 242 | 22 | 429683 | J CD7 Placer 6 | La Paz | 2014-02958 | 4N | 20W | 23 | 20 | 1 | \$ 155 | Placer | | New | | | |
| 243 | 22 | 433937 | J Diablo Placer 1 | La Paz | 2015-03207 | 4N | 20W | 24 | 20 | 1 | \$ 155 | Placer | | New | | | |
| 244 | 22 | 433938 | J Diablo Placer 2 | La Paz | 2015-03208 | 4N | 20W | 24 | 20 | 1 | \$ 155 | Placer | | New | | | |
| 245 | 22 | 433939 | J Diablo Placer 3 | La Paz | 2015-03209 | 4N | 20W | 23 | 20 | 1 | \$ 155 | Placer | | New | | | |
| 246 | 22 | 433940 | J Diablo Placer 4 | La Paz | 2015-03210 | 4N | 20W | 23 | 20 | 1 | \$ 155 | Placer | | New | | | |
| 247 | 22 | 440315 | J Diablo Placer 5 | La Paz | 2016-03907 | 4N | 20W | 23 | 20 | 1 | \$ 155 | Placer | | New | | | |
| 248 | 22 | 440316 | J Diablo Placer 6 | La Paz | 2016-03908 | 4N | 20W | 23 | 20 | 1 | \$ 155 | Placer | | New | | | |
| 249 | 22 | 440317 | J Diablo Placer 7 | La Paz | 2016-03909 | 4N | 20W | 23 | 20 | 1 | \$ 155 | Placer | | New | | | |
| 250 | 22 | 440318 | J Diablo Placer 8 | La Paz | 2016-03910 | 4N | 20W | 23 | 10 | 1 | \$ 155 | Placer | | New | | | |
| 251 | 22 | 435566 | J Eastside Placer 1 | La Paz | 2015-04234 | 4N | 20W | 23 | 20 | 1 | \$ 155 | Placer | | New | | | |
| 252 | 22 | 435567 | J Eastside Placer 2 | La Paz | 2015-04236 | 4N | 20W | 23 | 20 | 1 | \$ 155 | Placer | | New | | | |
| 253 | 22 | 435568 | J Eastside Placer 3 | La Paz | 2015-04235 | 4N | 20W | 23 | 10 | 1 | \$ 155 | Placer | | New | | | |
| 254 | 23 | 326754 | - Keystone #1 | Pinal | 1922 836 | 5S | 15E | 4 | 20 | 1 | \$ 155 | Placer | | 20 | | | |
| 255 | 23 | 326764 | J Keystone #11 | Pinal | 1922 856 | 5S | 15E | 4 | 20 | 1 | \$ 155 | Placer | | 20 | | | |
| 256 | 23 | 326765 | J Keystone #12 | Pinal | 1922 858 | 5S | 15E | 4 | 20 | 1 | \$ 155 | Placer | | 20 | | | |

RECEIVED
 PHOENIX, ARIZONA
 2018 AUG 22 P 2:21
 LA PAZ STATE OFFICE

RRPC Master Claims List as of September 1, 2018

\$ 43,865 <<Total Projected Maintenance Fee for 2018

283 \$ 155.00 <Enter Current Rate

| # | Map | AMC # | Claim Name | County | Cnty Recorder Data Record/Book Page | Township | Range | Section | Total Acres | 20 Acre Segments | Maint. Fee | Lode /Placer | PNF Lands | Original 2012 Acres | Comments |
|-----|-----|--------|--------------------|---------|-------------------------------------|----------|-------|---------|-------------|------------------|------------|--------------|-----------|---------------------|----------------------------|
| 257 | 23 | 326757 | Keystone #4 | Pinal | 1922 842 | 5S | 15E | 4 | 20 | 1 | \$ 155 | Placer | | 20 | |
| 258 | 23 | 326758 | Keystone #5 | Pinal | 1922 844 | 5S | 15E | 4 | 20 | 1 | \$ 155 | Placer | | 20 | |
| 259 | 23 | 326760 | Keystone #7 | Pinal | 1922 848 | 5S | 15E | 4 | 20 | 1 | \$ 155 | Placer | | 20 | |
| 260 | 23 | 326761 | Keystone #8 | Pinal | 1922 850 | 5S | 15E | 4 | 20 | 1 | \$ 155 | Placer | | 20 | |
| 261 | 23 | 326762 | Keystone #9 | Pinal | 1922 852 | 5S | 15E | 4 | 20 | 1 | \$ 155 | Placer | | 20 | |
| 262 | 24 | 451088 | C and S Honey Hole | Yavapai | 2018-0022978 | 11N | 1E | 25 | 20 | 1 | \$ 155 | Placer | PNF | New | May-18 |
| 263 | 24 | 451089 | Ron's Roost | Yavapai | 2018-0022979 | 11N | 1E | 25 | 20 | 1 | \$ 155 | Placer | PNF | New | May-18 |
| 264 | 24 | 451091 | Wayne's World | Yavapai | 2018-0022977 | 11N | 1E | 36 | 20 | 1 | \$ 155 | Placer | PNF | New | May-18 |
| 265 | 26 | 429669 | Bumble Bee King 1 | Yavapai | 2014-0040521 | 9N | 2E | 5 | 20 | 1 | \$ 155 | Placer | | New | |
| 266 | 26 | 429670 | Bumble Bee King 2 | Yavapai | 2014-0040522 | 9N | 2E | 5 | 20 | 1 | \$ 155 | Placer | | New | |
| 267 | 26 | 429671 | Bumble Bee King 3 | Yavapai | 2014-0040523 | 9N | 2E | 5 | 20 | 1 | \$ 155 | Placer | | New | |
| 268 | 26 | 429672 | Bumble Bee King 4 | Yavapai | 2014-0040524 | 9N | 2E | 5 | 20 | 1 | \$ 155 | Placer | | New | |
| 269 | 26 | 429673 | Bumble Bee King 5 | Yavapai | 2014-0040525 | 9N | 2E | 5 | 20 | 1 | \$ 155 | Placer | | New | |
| 270 | 26 | 429674 | Bumble Bee King 6 | Yavapai | 2014-0040526 | 9N | 2E | 5 | 20 | 1 | \$ 155 | Placer | | New | |
| 271 | 27 | 314304 | Oro De Valenzuela | Yavapai | 3436 378 | 11N | 1E | 14 | 20 | 1 | \$ 155 | Placer | PNF | 23.42 | Amended to 20 acres 08/14. |
| 272 | 28 | 364340 | Mary Francis | Yavapai | 3824744 4236 718 | 13N | 1E | 29 | 16 | 1 | \$ 155 | Placer | | 16 | |

5,548.9 283 \$ 43,865
 283 segments x \$155 = \$ 43,865

Notes:

Au Sum 1 and Wolf 4 are duplicated in BLM records.
 All 11 lode claims are listed as 20.66 acres, not 20 acres,
 Col. J = Acreage recorded by BLM

45/098 OK
 45/089
 C4980

RECEIVED
 PHOENIX, ARIZONA
 2018 AUG 22 P 2:22
 AZ STATE OFFICE

United States Department of the Interior
Bureau of Land Management
 DIV OF LANDS, MINRLS & ENERGY
 ONE N CENTRAL AVE
 PHOENIX, AZ 85004 -4427
 Phone: 602-417-9200

Receipt

No: 4241956

| | |
|--|--|
| Transaction #: 4357380 | |
| Date of Transaction: 08/22/2018 | |
| CUSTOMER: | |
| ROADRUNNER PROSPECTORS CLUB INC PO BOX 56804 PHOENIX, AZ 85079-6804 US | |

| LINE # | QTY | DESCRIPTION | REMARKS | UNIT PRICE | TOTAL |
|---------------|------|---|----------------|------------|--------------------|
| 1 | 1.00 | LOCATABLE MINERALS / MINING CLAIMS-NOT NEW-UNADJUD, ONE AUTH NO. ONLY / MINING CLAIM MONEY RECEIVED CASES: AMC374513/\$43865.00 | 2019 MAINT/283 | - n/a - | 43865.00 |
| TOTAL: | | | | | \$43,865.00 |

| PAYMENT INFORMATION | | | |
|---------------------|-----------|---|----------------------|
| 1 | AMOUNT: | 43865.00 | POSTMARKED: N/A |
| | TYPE: | CHECK | RECEIVED: 08/22/2018 |
| | CHECK NO: | 9459 | |
| | NAME: | ROADRUNNER PROSPECTORS CLUB INC PO BOX 56804 PHOENIX AZ 85079-6804 US | |

| |
|----------------|
| REMARKS |
| |

This receipt was generated by the automated BLM Collections and Billing System and is a paper representation of a portion of the official electronic record contained therein.

| | | | | |
|-------|--------|-------------------|--------|--------|
| 95198 | 406356 | 339964 | 313473 | 102389 |
| 96051 | 407030 | 348628 | 314304 | 11413 |
| | 410363 | 350275 | 314626 | 126534 |
| | 411385 | 350903 | 321061 | 130488 |
| | 427326 | 356380 | 326311 | 142355 |
| | 429664 | 356553 | 326754 | 157621 |
| | 430534 | 358378 | 326772 | 170911 |
| | 430611 | 358379 | 327930 | 174224 |
| | 433937 | 358378 | 327930 | 191670 |
| | 435083 | 362558 | 328302 | 196365 |
| | 435561 | 364340 | 328593 | 235841 |
| | 437448 | 364688 | 328689 | 236096 |
| | 437934 | 364820 | 328742 | 244561 |
| | 440315 | 365711 | 329013 | 247112 |
| | 48976 | 366267 | 329318 | 251042 |
| | 62606 | 368415 | 329388 | 254410 |
| | 64830 | 371350 | 329800 | 258455 |
| | 68526 | 371802 | 331232 | 291104 |
| | 74734 | 374274 | 331455 | 300332 |
| | 76950 | 374511 | 333426 | |
| | 82212 | 374726 | 338207 | |
| | 89414 | | | |



| # | Map | AMC # | Claim Name | County | Cnty Recorder Data Record/Book Page | Township | Range | Section | Total Acres | 20 Acre Segments | Maint. Fe |
|----|-----|--------|---------------------|---------|--|-----------|-------|-------------|----------------|---------------------|-----------|
| 1 | 1 | 374513 | Caitlin Lisa | Yavapai | 4452 917 | 12.5, 13N | 1W | 23,24,35,36 | 20.0 | 1 | \$ 155 |
| 2 | 1 | 374512 | Cole Ryan | Yavapai | 2014-0056442 | 12.5N | 1W | 24 | 18.5 | 1 | \$ 155 |
| 3 | 1 | 365711 | Diggems Paradise | Yavapai | 3864391 4269 775 | 12.5N | 1W | 26 | 17.1 | 1 | \$ 155 |
| 4 | 1 | 191670 | Roadrunner #1 | Yavapai | 1514 754 | 12.5N | 1W | 25 | 12.85 | 1 | \$ 155 |
| 5 | 1 | 191671 | Roadrunner #2 | Yavapai | 1514 756 | 12.5N | 1W | 25 | 20 | 1 | \$ 155 |
| 6 | 1 | 348628 | Vira Anne 1 | Yavapai | 2015-0008296 | 12.5N | 1W | 27 | 17.3 | 1 | \$ 155 |
| 7 | 1 | 430611 | Vira Anne 2 | Yavapai | 2014-0008298 | 12.5N | 1W | 27 | 16.50 | 1 | \$ 155 |
| 8 | 2 | 328703 | Ceedee #1 | Yavapai | 2746 703 | 8N | 1W | 5 | 20 | 1 | \$ 155 |
| 9 | 2 | 328593 | Ceedee #2 | Yavapai | 2742 961 | 8N | 1W | 5 | 20 | 1 | \$ 155 |
| 10 | 2 | 328594 | Ceedee #3 | Yavapai | 2742 963 | 8N | 1W | 5 | 20 | 1 | \$ 155 |
| 11 | 2 | 328595 | Ceedee #4 | Yavapai | 2742 965 | 8N | 1W | 5 | 20 | 1 | \$ 155 |
| 12 | 2 | 328704 | Ceedee #5 | Yavapai | 2746 705 | 8N | 1W | 5 | 20 | 1 | \$ 155 |
| 13 | 2 | 328597 | Ceedee #7 | Yavapai | 2742 969 | 8N | 1W | 4 | 20 | 1 | \$ 155 |
| 14 | 2 | 328598 | Ceedee #8 | Yavapai | 2742 971 | 8N | 1W | 4 | 20 | 1 | \$ 155 |
| 15 | 3 | 374511 | Carolyn D | Yavapai | 4444 69 | 13N | 3W | 29 | 20.0 | 1 | \$ 155 |
| 16 | 3 | 371802 | Happy Times | Yavapai | 4390 621 | 13N | 3W | 29, 32 | 20 | 1 | \$ 155 |
| 17 | 3 | 368415 | Jacks Hideaway | Yavapai | 4308 863 | 13N | 3W | 29 | 20 | 1 | \$ 155 |
| 18 | 3 | 366268 | Renee's Best Chance | Yavapai | 4281 507 | 13N | 3W | 32 | 20 | 1 | \$ 155 |
| 19 | 3 | 371803 | Saddle Tramps | Yavapai | 4390 622 | 13N | 3W | 29 | 20 | 1 | \$ 155 |
| 20 | 3 | 366270 | Stuck Duck | Yavapai | 4281 506 | 13N | 3W | 32 | 20 | 1 | \$ 155 |
| 21 | 3 | 371350 | Wilgers Wish | Yavapai | 4372 442 | 13N | 3W | 32 | 20 | 1 | \$ 155 |
| 22 | 4 | 96051 | JDR #1 | Yavapai | 1267 825 | 12.5N | 2W | 21 | 20 | 1 | \$ 155 |
| 23 | 4 | 96052 | JDR #2 | Yavapai | 1267 827 | 12.5N | 2W | 21 | 20 | 1 | \$ 155 |
| 24 | 4 | 96053 | JDR #3 | Yavapai | 1267 829 | 12.5N/13N | 2W/2W | 21/33 | 20 | 1 | \$ 155 |
| 25 | 5 | 328705 | Genes Dream | Yavapai | 2746 707 | 9.5N | 2E | 20, 21 | 20 | 1 | \$ 155 |
| 26 | 5 | 362558 | Holly Marie | Yavapai | 3769442 4190 312 | 9.5N | 2E | 20, 21 | 11.45 | 1 | \$ 155 |
| 27 | 5 | 429703 | Janet Lynn 2-1 | Yavapai | 2014-0040485 | 10N | 1E | 12 | 20 | 1 | \$ 155 |
| 28 | 5 | 435087 | Janet Lynn 2-2 | Yavapai | 2015-0052258 | 10N | 1E | 12, 13 | 15 | 1 | \$ 155 |
| 29 | 5 | 435088 | Janet Lynn 2-3 | Yavapai | 2015-0052259 | 10N | 1E | 12, 13 | 15 | 1 | \$ 155 |
| 30 | 5 | 435569 | Laura Kay 1-1 | Yavapai | 2015-0055540 | 10N | 1E | 12 | 20 | 1 | \$ 155 |
| 31 | 5 | 435570 | Laura Kay 1-2 | Yavapai | 2015-0055541 | 10N | 1E | 12 | 20 | 1 | \$ 155 |
| 32 | 5 | 435571 | Laura Kay 1-3 | Yavapai | 2015-0055542 | 10N | 1E | 12 | 20 | 1 | \$ 155 |
| 33 | 5 | 126538 | Mandala 10 | Yavapai | 1371 343 | 10N | 2E | 31 | 20 | 1 | \$ 155 |
| 34 | 5 | 129334 | Mandala 12 | Yavapai | 1376 706 | 10N | 2E | 30 | 20 | 1 | \$ 155 |
| 35 | 5 | 157621 | Mandala 14 | Yavapai | 1437 981 | 10N | 2E | 30 | 20 | 1 | \$ 155 |
| 36 | 5 | 102389 | Mandala 2 & 3 | Yavapai | 1293 289 | 10N | 2E | 30 | 20 | 1 | \$ 155 |
| 37 | 5 | 126535 | Mandala 7 | Yavapai | 1371 337 | 10N | 2E | 30 | 20 | 1 | \$ 155 |
| 38 | 5 | 126536 | Mandala 8 | Yavapai | 1371 339 | 10N | 2E | 30 | 20 | 1 | \$ 155 |
| 39 | 5 | 126537 | Mandala 9 | Yavapai | 1371 341 | 10N | 2E | 30 | 20 | 1 | \$ 155 |
| 40 | 5 | 170911 | Wednesday Hope #1 | Yavapai | 1467 691 | 10N | 2E | 31 | 20 | 1 | \$ 155 |
| 41 | 5 | 11413 | Wednesday Hope #4 | Yavapai | 1015 726, 1799 33, 1569 374 | 9.5N/10N | 2E/2E | 20/32 | 20 | 1 | \$ 155 |
| 42 | 6 | 329388 | Bad Luck | Yavapai | 2780 912 | 12N | 1W | 14, 23 | 20 | 1 | \$ 155 |
| 43 | 6 | 235841 | Betty #4 | Yavapai | 1713 778 | 12N | 1W | 14 | 20 | 1 | \$ 155 |
| 44 | 6 | 235842 | Betty #5 | Yavapai | 1713 780 | 12N | 1W | 14 | 20 | 1 | \$ 155 |
| 45 | 6 | 174224 | Big Rock #1 | Yavapai | 1469 76 | 12N | 1W | 10, 11 | 20 | 1 | \$ 155 |
| 46 | 6 | 174225 | Big Rock #2 | Yavapai | 1469 78 | 12N | 1W | 10 | 20 | 1 | \$ 155 |
| 47 | 6 | 236096 | Gary's Place #1A | Yavapai | 1714 193 | 12N | 1W | 14 | 20 | 1 | \$ 155 |
| 48 | 6 | 329390 | Good Luck | Yavapai | 2780 916 | 12N | 1W | 23, 24 | 20 | 1 | \$ 155 |
| 49 | 6 | 329391 | Great Luck | Yavapai | 2780 918 | 12N | 1W | 24 | 20 | 1 | \$ 155 |
| 50 | 6 | 329389 | No Luck | Yavapai | 2780 914 | 12N | 1W | 23 | 20 | 1 | \$ 155 |
| 51 | 6 | 364821 | Ray's Right Place | Yavapai | 3837647 4247 553 | 12N | 1W | 24 | 17.0 | 1 | \$ 155 |
| 52 | 7 | 366267 | Cobi's Gold | Yavapai | 4281 505 | 11.5N | 1E | 19 | 20 | 1 | \$ 155 |
| 53 | 7 | 427326 | Rexs' Place | Yavapai | 4914 661 | 11.5N | 1E | 30 | 20 | 1 | \$ 155 |
| 54 | 7 | 366269 | Rough Road | Yavapai | 4281 503 | 11.5N | 1E | 30 | 20 | 1 | \$ 155 |
| 55 | 7 | 366271 | Tegan's Bank | Yavapai | 4281 504 | 11.5N | 1E | 30 | 20 | 1 | \$ 155 |
| 56 | 7 | 89420 | Wolf #1 | Yavapai | 0961 673, 90 203541 | 11.5N | 1E | 31 | 20 | 1 | \$ 155 |
| 57 | 7 | 89421 | Wolf #2 | Yavapai | 0961 674, 2207 41 | 11.5N | 1E | 31 | 20 | 1 | \$ 155 |
| 58 | 7 | 89422 | Wolf #3 | Yavapai | 0961 675, 2207 41 | 11.5N | 1E | 31 | 20 | 1 | \$ 155 |
| 59 | 7 | 89423 | Wolf #4 | Yavapai | 0961 676, 2207 41 | 11.5N/11N | 1E/1E | 31/6 | 20 | 1 | \$ 155 |
| 60 | 7 | 300332 | Wolf #5 | Yavapai | 2208 526 | 11.5N | 1E | 31 | 20 | 1 | \$ 155 |
| 61 | 7 | 300333 | Wolf #6 | Yavapai | 2208 524 | 11N | 1E | 5, 6 | 20 | 1 | \$ 155 |
| 62 | 8 | 82213 | Bean Bag #1 | Yavapai | 0965 338, 1252 276 | 12N | 1W | 28 | 20 | 1 | \$ 155 |
| 63 | 8 | 435561 | Bean Bag 2-1 | Yavapai | 2015-0055543 | 10N | 2E | 30 | 20 | 1 | \$ 155 |
| 64 | 8 | 435562 | Bean Bag 2-2 | Yavapai | 2015-0055544 | 10N | 2E | 30 | 20 | 1 | \$ 155 |
| 65 | 8 | 328605 | Burro #1 | Yavapai | 2742 987 | 12N | 1W | 33 | 20 | 1 | \$ 155 |
| 66 | 8 | 328606 | Burro #2 | Yavapai | 2742 985 | 11N | 1W | 4 | 20 | 1 | \$ 155 |
| 67 | 8 | 142356 | Donkey Mine #4 | Yavapai | 1422 292 | 12N | 1W | 33 | 20 | 1 | \$ 155 |
| 68 | 8 | 437451 | Goodwin 1-1 | Yavapai | 2016-0019094 | 12N | 1W | 28, 33 | 20 | 1 | \$ 155 |
| 69 | 8 | 437452 | Goodwin 1-2 | Yavapai | 2016-0019093 | 12N | 1W | 33 | 20 | 1 | \$ 155 |
| 70 | 8 | 329318 | Mercer's Place | Yavapai | 2777 216, 3288 700 | 11N | 1W | 4 | 20 | 1 | \$ 155 |
| 71 | 8 | 76951 | Merciful Heavens #2 | Yavapai | 1329 344 | 12N/11N | 1W/1W | 33/4 | 20 | 1 | \$ 155 |
| 72 | 8 | 313473 | Patriot 1 | Yavapai | 2347 704 | 11N | 1W | 4 | 20 | 1 | \$ 155 |

| # | Map | AMC # | Claim Name | County | Cnty Recorder Data Record/Book Page | Township | Range | Section | Total Acres | 20 Acre Segments | Maint. Fee |
|-----|-----|--------|-----------------------|----------|--|----------|-------|-------------|----------------|---------------------|------------|
| 73 | 8 | 313474 | Patriot 2 | Yavapai | 2347 706 | 11N | 1W | 3, 4 | 20 | 1 | \$ 155 |
| 74 | 8 | 313475 | Patriot 3 | Yavapai | 2347 708 | 11N | 1W | 3 | 20 | 1 | \$ 155 |
| 75 | 8 | 313476 | Patriot 4 | Yavapai | 2347 710 | 11N | 1W | 3 | 20 | 1 | \$ 155 |
| 76 | 8 | 313477 | Patriot 5 | Yavapai | 2347 712 | 11N | 1W | 3 | 20 | 1 | \$ 155 |
| 77 | 8 | 130489 | Protecto 2 | Yavapai | 1381 826 | 12N | 1W | 33 | 20 | 1 | \$ 155 |
| 78 | 9 | 329394 | Bonny | Yavapai | 2780 924 | 12N | 1W | 30 | 20 | 1 | \$ 155 |
| 79 | 9 | 331455 | Chris #1 | Yavapai | 2919 631 | 12N | 2W | 36 | 20.0 | 1 | \$ 155 |
| 80 | 9 | 329392 | Clinton | Yavapai | 2780 920 | 12N/12N | 1W/2W | 30/25 | 20 | 1 | \$ 155 |
| 81 | 9 | 329393 | Clyde | Yavapai | 2780 922 | 12N/12N | 1W/2W | 30/25 | 20 | 1 | \$ 155 |
| 82 | 9 | 356382 | Ducbill #1 | Yavapai | 27429 1402 63 | 12N | 1W | 17 | 20 | 1 | \$ 155 |
| 83 | 9 | 356383 | Ducbill #2 | Yavapai | 27430 1402 65 | 12N | 1W | 17 | 20 | 1 | \$ 155 |
| 84 | 9 | 95198 | Gold Palace I | Yavapai | 1256 447 | 12N | 1W | 19 | 20 | 1 | \$ 155 |
| 85 | 9 | 95199 | Gold Palace II | Yavapai | 1256 450 | 12N | 1W | 19 | 20 | 1 | \$ 155 |
| 86 | 9 | 95200 | Gold Palace III | Yavapai | 1256 453 | 12N | 1W | 19 | 20 | 1 | \$ 155 |
| 87 | 9 | 95201 | Gold Palace IV | Yavapai | 1256 456 | 12N | 1W | 19 | 20 | 1 | \$ 155 |
| 88 | 9 | 95202 | Gold Palace V | Yavapai | 1256 459 | 12N | 1W | 19 | 20 | 1 | \$ 155 |
| 89 | 9 | 95203 | Gold Palace VI | Yavapai | 1256 462 | 12N | 1W | 19 | 20 | 1 | \$ 155 |
| 90 | 9 | 95204 | Gold Palace VII | Yavapai | 1256 465 | 12N | 1W | 19 | 20 | 1 | \$ 155 |
| 91 | 9 | 95205 | Gold Palace VIII | Yavapai | 1256 468 | 12N | 1W | 30 | 20 | 1 | \$ 155 |
| 92 | 9 | 358378 | Hidden Treasure | Yavapai | 3633816 4076 796 | 12N/12N | 1W/2W | 30,31/25,36 | 20 | 1 | \$ 155 |
| 93 | 10 | 358379 | Aquarius Ext. West #1 | Yavapai | 3633817 4076 797 | 10N | 2E | 18 | 20 | 1 | \$ 155 |
| 94 | 10 | 358380 | Aquarius Ext. West #2 | Yavapai | 3633818 4076 798 | 10N | 2E | 18 | 20 | 1 | \$ 155 |
| 95 | 10 | 358381 | Aquarius Ext. West #3 | Yavapai | 3633819 4076 799 | 10N | 2E | 18 | 20 | 1 | \$ 155 |
| 96 | 10 | 358382 | Aquarius Ext. West #4 | Yavapai | 3633820 4076 800 | 10N | 2E | 18 | 20 | 1 | \$ 155 |
| 97 | 10 | 48976 | Aquarius #1 | Yavapai | 0801 192 *** | 10N | 2E | 7 | 20 | 1 | \$ 155 |
| 98 | 10 | 62606 | Aquarius #2 | Yavapai | 1001 437 | 10N | 2E | 7 | 20 | 1 | \$ 155 |
| 99 | 10 | 48977 | Aquarius #3 | Yavapai | 0801 194 *** | 10N | 2E | 7, 18 | 20 | 1 | \$ 155 |
| 100 | 10 | 435083 | Aquarius Extension 1 | Yavapai | 2015-0052260 | 10N | 2E | 18 | 20 | 1 | \$ 155 |
| 101 | 10 | 435084 | Aquarius Extension 2 | Yavapai | 2015-0052261 | 10N | 2E | 18 | 20 | 1 | \$ 155 |
| 102 | 10 | 435085 | Aquarius Extension 3 | Yavapai | 2015-0052262 | 10N | 2E | 18 | 20 | 1 | \$ 155 |
| 103 | 10 | 435086 | Aquarius Extension 4 | Yavapai | 2015-0052263 | 10N | 2E | 18 | 20 | 1 | \$ 155 |
| 104 | 11 | 254412 | Hinny | Yavapai | 4069 601, 1341 96, 1807 656 | 11N | 1E | 34 | 16.22 | 1 | \$ 155 |
| 105 | 11 | 254410 | Jackass | Yavapai | 4069 605 | 11N | 1E | 34, 35 | 19.97 | 1 | \$ 155 |
| 106 | 11 | 254411 | Jenney | Yavapai | 4069 602 | 11N | 1E | 34 | 20 | 1 | \$ 155 |
| 107 | 11 | 328742 | Red Bird #11 | Yavapai | 2754 072 | 10N | 1E | 1 | 40 | 2 | \$ 310 |
| 108 | 11 | 74736 | Sharon Lee #3 | Yavapai | 0912 399 | 10N | 1E | 2 | 20 | 1 | \$ 155 |
| 109 | 11 | 429736 | Sharon Lee 1-1 | Yavapai | 2014-0040492 | 11N | 1E | 35, 36 | 20 | 1 | \$ 155 |
| 110 | 11 | 429737 | Sharon Lee 1-2 | Yavapai | 2014-0040493 | 11N | 1E | 35, 36 | 20 | 1 | \$ 155 |
| 111 | 11 | 429738 | Sharon Lee 1-3 | Yavapai | 2014-0040494 | 11N | 1E | 35, 36 | 20 | 1 | \$ 155 |
| 112 | 11 | 429739 | Sharon Lee 1-4 | Yavapai | 2014-0040495 | 11N | 1E | 35, 36 | 20 | 1 | \$ 155 |
| 113 | 11 | 429740 | Sharon Lee 2-1 | Yavapai | 2014-0040496 | 11N | 1E | 35 | 20 | 1 | \$ 155 |
| 114 | 11 | 429741 | Sharon Lee 2-2 | Yavapai | 2014-0040497 | 11N | 1E | 35 | 20 | 1 | \$ 155 |
| 115 | 11 | 429742 | Sharon Lee 2-3 | Yavapai | 2014-0040498 | 11N | 1E | 35 | 20 | 1 | \$ 155 |
| 116 | 11 | 429743 | Sharon Lee 4-1 | Yavapai | 2014-0040499 | 10N | 1E | 1, 2 | 20 | 1 | \$ 155 |
| 117 | 11 | 429744 | Sharon Lee 4-2 | Yavapai | 2014-0040500 | 10N | 1E | 1, 2 | 20 | 1 | \$ 155 |
| 118 | 11 | 429745 | Sharon Lee 4-3 | Yavapai | 2014-0040501 | 10N | 1E | 1, 2 | 20 | 1 | \$ 155 |
| 119 | 11 | 429746 | Sharon Lee 4-4 | Yavapai | 2014-0040502 | 10N | 1E | 1, 2 | 20 | 1 | \$ 155 |
| 120 | 11 | 429747 | Sharon Lee 4-5 | Yavapai | 2014-0040503 | 10N | 1E | 1, 2 | 20 | 1 | \$ 155 |
| 121 | 11 | 429748 | Sharon Lee 4-6 | Yavapai | 2014-0040504 | 10N | 1E | 1, 2 | 20 | 1 | \$ 155 |
| 122 | 12 | 326313 | Carrie #3 | Maricopa | 93 0174160 | 7N | 3W | 30 | 20 | 1 | \$ 155 |
| 123 | 12 | 326314 | Carrie #4 | Maricopa | 93 0174159 | 7N | 3W | 30 | 20 | 1 | \$ 155 |
| 124 | 12 | 437934 | Carrie 1-1 | Maricopa | 2016-0242927 | 7N | 3W | 31 | 20 | 1 | \$ 155 |
| 125 | 12 | 437449 | Carrie 1-2 | Maricopa | 2016-0222160 | 7N | 3W | 31 | 20 | 1 | \$ 155 |
| 126 | 12 | 326312 | Carrie 2-1 | Maricopa | 2016-0222161 | 7N | 3W | 31 | 20 | 1 | \$ 155 |
| 127 | 12 | 437450 | Carrie 2-2 | Maricopa | 2016-0222162 | 7N | 3W | 31 | 20 | 1 | \$ 155 |
| 128 | 12 | 291104 | Cas #2 | Maricopa | 92 0366284, 88 598383 | 7N | 3W | 29 | 20 | 1 | \$ 155 |
| 129 | 12 | 410363 | Cass # 10 | Maricopa | 11 0735632 | 7N | 3W | 29 | 20 | 1 | \$ 155 |
| 130 | 12 | 328698 | Cass No. 4 | Maricopa | 93 0885578 | 7N | 3W | 29 | 20 | 1 | \$ 155 |
| 131 | 12 | 328699 | Cass No. 5 | Maricopa | 93 0885577 | 7N | 3W | 29 | 20 | 1 | \$ 155 |
| 132 | 12 | 328700 | Cass No. 6 | Maricopa | 93 0885576 | 7N | 3W | 29 | 20 | 1 | \$ 155 |
| 133 | 12 | 328701 | Cass No. 7 | Maricopa | 93 0885575 | 7N | 3W | 29 | 20 | 1 | \$ 155 |
| 134 | 12 | 328702 | Cass No. 8 | Maricopa | 93 0885574 | 7N | 3W | 29 | 20 | 1 | \$ 155 |
| 135 | 12 | 406356 | Cass No. 9 | Maricopa | 11 0623988 | 7N | 3W | 29 | 20 | 1 | \$ 155 |
| 136 | 12 | 374275 | Charles' Dream | Maricopa | 06 1491112 | 7N | 3W | 20 | 20 | 1 | \$ 155 |
| 137 | 12 | 329800 | Gypsy Moth 1 | Maricopa | 94 0218517 | 7N | 3W | 21 | 20 | 1 | \$ 155 |
| 138 | 12 | 329801 | Gypsy Moth 2 | Maricopa | 94 0218518 | 7N | 3W | 21 | 20 | 1 | \$ 155 |
| 139 | 12 | 326325 | Jake #3 | Maricopa | 93 0174145 | 7N | 3W | 29 | 20 | 1 | \$ 155 |
| 140 | 12 | 429695 | Jake 1-1 | Maricopa | 2014-0584266 | 7N | 3W | 29 | 20 | 1 | \$ 155 |
| 141 | 12 | 429696 | Jake 1-2 | Maricopa | 2014-0584267 | 7N | 3W | 29 | 20 | 1 | \$ 155 |
| 142 | 12 | 429697 | Jake 1-3 | Maricopa | 2014-0584268 | 7N | 3W | 29 | 20 | 1 | \$ 155 |
| 143 | 12 | 429698 | Jake 1-4 | Maricopa | 2014-0584269 | 7N | 3W | 29 | 20 | 1 | \$ 155 |
| 144 | 12 | 429699 | Jake 2-1 | Maricopa | 2014-0584270 | 7N | 3W | 29 | 20 | 1 | \$ 155 |

2017 AUG 16 P 12:45
 PROPERTY ABANDONED OFFICE

RRPC Water Claims List as of January 1, 2017

279 \$ 43,24
\$ 155.0

| # | Map | AMC # | Claim Name | County | Cnty Recorder Data Record/Book Page | Township | Range | Section | Total Acres | 20 Acre Segments | Maint. Fc |
|-----|-----|--------|---------------------|----------|--|----------|-------|---------|----------------|---------------------|-----------|
| 145 | 12 | 429700 | Jake 2-2 | Maricopa | 2014-0584271 | 7N | 3W | 29 | 20 | 1 | \$ 15 |
| 146 | 12 | 429701 | Jake 2-3 | Maricopa | 2014-0584272 | 7N | 3W | 29 | 20 | 1 | \$ 15 |
| 147 | 12 | 429702 | Jake 2-4 | Maricopa | 2014-0584273 | 7N | 3W | 29 | 20 | 1 | \$ 15 |
| 148 | 12 | 333426 | La Siesta #1 | Maricopa | 95 0185054 | 7N | 3W | 30 | 20 | 1 | \$ 15 |
| 149 | 12 | 333427 | La Siesta #3 | Maricopa | 95 0185055 | 7N | 3W | 30 | 20 | 1 | \$ 15 |
| 150 | 12 | 374274 | Lori's Place | Maricopa | 06 1491113 | 7N | 3W | 20 | 20 | 1 | \$ 15 |
| 151 | 12 | 326319 | Pat | Maricopa | 93 0174152 | 7N | 3W | 31 | 20 | 1 | \$ 15 |
| 152 | 12 | 326316 | Pennyweight #2 | Maricopa | 93 0174156 | 7N | 3W | 29 | 20 | 1 | \$ 15 |
| 153 | 12 | 326315 | Pennyweight 1-1 | Maricopa | 2016-0222163 | 7N | 3W | 29 | 20 | 1 | \$ 15 |
| 154 | 12 | 437453 | Pennyweight 1-2 | Maricopa | 2016-0222164 | 7N | 3W | 29 | 20 | 1 | \$ 15 |
| 155 | 12 | 326327 | Pilgrim #1 | Maricopa | 93 0174153 | 7N | 3W | 31 | 20 | 1 | \$ 15 |
| 156 | 12 | 429724 | Randy B 1 | Maricopa | 2014-0584262 | 7N | 3W | 30 | 20 | 1 | \$ 15 |
| 157 | 12 | 429725 | Randy B 2 | Maricopa | 2014-0584263 | 7N | 3W | 30 | 20 | 1 | \$ 15 |
| 158 | 12 | 429726 | Randy B 3 | Maricopa | 2014-0584264 | 7N | 3W | 30 | 20 | 1 | \$ 15 |
| 159 | 12 | 429727 | Randy B 4 | Maricopa | 2014-0584265 | 7N | 3W | 30 | 20 | 1 | \$ 15 |
| 160 | 12 | 326772 | Range Bull # 1 | Maricopa | 93 0362063 | 7N | 3W | 21 | 20 | 1 | \$ 15 |
| 161 | 12 | 247112 | Sando | Maricopa | 85 0559653 | 7N | 3W | 28 | 20 | 1 | \$ 15 |
| 162 | 13 | 350275 | Gold Bug | Maricopa | 98 0535738 | 6N | 6W | 26 | 20 | 1 | \$ 15 |
| 163 | 13 | 350276 | Gold Master | Maricopa | 98 0535739 | 6N | 6W | 26 | 20 | 1 | \$ 15 |
| 164 | 13 | 350277 | Lobo | Maricopa | 98 0535740 | 6N | 6W | 26 | 20 | 1 | \$ 15 |
| 165 | 13 | 350278 | Mine Lab | Maricopa | 98 0535741 | 6N | 6W | 26 | 20 | 1 | \$ 15 |
| 166 | 13 | 331233 | Red Basin #1 | Maricopa | 14 0184527 | 6N | 6W | 26 | 145.45 | 8 | \$ 1,24 |
| 167 | 13 | 350279 | Webster Mine | Maricopa | 98 0535742 | 6N | 6W | 26 | 20 | 1 | \$ 15 |
| 168 | 13 | 350280 | Whistler | Maricopa | 98 0535743 | 6N | 6W | 26 | 20 | 1 | \$ 15 |
| 169 | 13 | 350281 | Wickenburg | Maricopa | 98 0535744 | 6N | 6W | 26 | 20 | 1 | \$ 15 |
| 170 | 14 | 321061 | Lefty #2 | Yavapai | 2479 560 | 8N | 1E | 30 | 20 | 1 | \$ 15 |
| 171 | 14 | 314631 | RR-Humbug #3 | Yavapai | 2360 845 | 8N | 1E | 29, 30 | 20 | 1 | \$ 15 |
| 172 | 14 | 429728 | RR-Humbug 1-1 | Yavapai | 2014-0040505 | 8N | 1E | 31 | 20 | 1 | \$ 15 |
| 173 | 14 | 429729 | RR-Humbug 1-2 | Yavapai | 2014-0040506 | 8N | 1E | 31 | 20 | 1 | \$ 15 |
| 174 | 14 | 429730 | RR-Humbug 1-3 | Yavapai | 2014-0040507 | 8N | 1E | 31 | 20 | 1 | \$ 15 |
| 175 | 14 | 429731 | RR-Humbug 1-4 | Yavapai | 2014-0040508 | 8N | 1E | 31 | 20 | 1 | \$ 15 |
| 176 | 14 | 429732 | RR-Humbug 1-5 | Yavapai | 2014-0040509 | 8N | 1E | 31 | 20 | 1 | \$ 15 |
| 177 | 14 | 429733 | RR-Humbug 1-6 | Yavapai | 2014-0040510 | 8N | 1E | 31 | 20 | 1 | \$ 15 |
| 178 | 14 | 429734 | RR-Humbug 2-1 | Yavapai | 2014-0040511 | 8N | 1E | 31 | 20 | 1 | \$ 15 |
| 179 | 14 | 429735 | RR-Humbug 2-2 | Yavapai | 2014-0040512 | 8N | 1E | 31 | 20 | 1 | \$ 15 |
| 180 | 15 | 244561 | Gold Dust #2 | Yavapai | 1781 510 | 11N | 3E | 30 | 6.88 | 1 | \$ 15 |
| 181 | 15 | 196365 | Turkey Buzzard #1 | Yavapai | 1529 712 | 11N | 3E | 30 | 13.77 | 1 | \$ 15 |
| 182 | 15 | 258456 | Turkey Buzzard #2 | Yavapai | 1838 872 | 11N | 3E | 30 | 20 | 1 | \$ 15 |
| 183 | 15 | 258457 | Turkey Buzzard #3 | Yavapai | 1838 874 | 11N | 3E | 30 | 20 | 1 | \$ 15 |
| 184 | 15 | 258458 | Turkey Buzzard #4 | Yavapai | 1838 876 | 11N | 3E | 30 | 20 | 1 | \$ 15 |
| 185 | 15 | 258455 | Turkey Buzzard Ext. | Yavapai | 1838 870 | 11N | 3E | 30 | 10 | 1 | \$ 15 |
| 186 | 16 | 430534 | Lucky Eight | Maricopa | 2015-0077601 | 7N | 5W | 3 | 20 | 1 | \$ 15 |
| 187 | 16 | 430535 | Lucky Nine | Maricopa | 2015-0077602 | 7N | 5W | 3 | 20 | 1 | \$ 15 |
| 188 | 16 | 411385 | Lucky Seven | Maricopa | 2015-0047844 | 7N | 5W | 3 | 20 | 1 | \$ 15 |
| 189 | 17 | 407030 | Carols Corner | Maricopa | 11 0623989 | 7N | 3W | 18 | 20 | 1 | \$ 15 |
| 190 | 17 | 410364 | Golden Sands | Maricopa | 11 073563 | 7N | 3W | 18 | 20 | 1 | \$ 15 |
| 191 | 17 | 429716 | Ocotillo 1-1 | Maricopa | 2014-0584274 | 7N | 3W | 17, 20 | 20 | 1 | \$ 15 |
| 192 | 17 | 429717 | Ocotillo 1-2 | Maricopa | 2014-0584275 | 7N | 3W | 17, 20 | 20 | 1 | \$ 15 |
| 193 | 17 | 429718 | Ocotillo 1-3 | Maricopa | 2014-0584276 | 7N | 3W | 17, 20 | 20 | 1 | \$ 15 |
| 194 | 17 | 429719 | Ocotillo 1-4 | Maricopa | 2014-0584277 | 7N | 3W | 17, 20 | 20 | 1 | \$ 15 |
| 195 | 17 | 429720 | Ocotillo 2-1 | Maricopa | 2014-0584278 | 7N | 3W | 17, 18 | 20 | 1 | \$ 15 |
| 196 | 17 | 429721 | Ocotillo 2-2 | Maricopa | 2014-0584279 | 7N | 3W | 17, 18 | 20 | 1 | \$ 15 |
| 197 | 17 | 429722 | Ocotillo 2-3 | Maricopa | 2014-0584280 | 7N | 3W | 17, 18 | 20 | 1 | \$ 15 |
| 198 | 17 | 429723 | Ocotillo 2-4 | Maricopa | 2014-0584281 | 7N | 3W | 17, 18 | 20 | 1 | \$ 15 |
| 199 | 17 | 327930 | Red Bird # 7 | Maricopa | 93 0897433 | 7N | 3W | 17 | 20 | 1 | \$ 15 |
| 200 | 17 | 327931 | Red Bird # 8 | Maricopa | 93 0897432 | 7N | 3W | 20 | 20 | 1 | \$ 15 |
| 201 | 17 | 328302 | Red Bird # 9 | Maricopa | 93 0897431 | 7N | 3W | 17 | 20 | 1 | \$ 15 |
| 202 | 17 | 374726 | Roslyn's Roost | Maricopa | 06 1445012 | 7N | 3W | 17 | 20 | 1 | \$ 15 |
| 203 | 19 | 326322 | Double R | Maricopa | 12 0735517 | 6N | 4W | 12 | 80 | 4 | \$ 620 |
| 204 | 19 | 329020 | RR #1 | Maricopa | 94 0021782 | 6N | 4W | 1 | 20 | 1 | \$ 15 |
| 205 | 19 | 329021 | RR #2 | Maricopa | 94 0021783 | 6N | 4W | 1 | 20 | 1 | \$ 15 |
| 206 | 19 | 329022 | RR #3 | Maricopa | 94 0021784 | 6N | 4W | 1 | 20 | 1 | \$ 15 |
| 207 | 19 | 329023 | RR #4 | Maricopa | 94 0021785 | 6N | 4W | 1 | 20 | 1 | \$ 15 |
| 208 | 19 | 339964 | RR #5 | Maricopa | 96 0488373 | 6N | 4W | 1 | 20 | 1 | \$ 15 |
| 209 | 19 | 339965 | RR #6 | Maricopa | 96 0488374 | 6N | 4W | 1 | 20 | 1 | \$ 15 |
| 210 | 19 | 364688 | RR #7 | Maricopa | 05 0477984 | 6N | 4W | 1 | 20 | 1 | \$ 15 |
| 211 | 19 | 364689 | RR #8 | Maricopa | 05 0477985 | 6N | 4W | 1 | 20 | 1 | \$ 15 |
| 212 | 19 | 338207 | Seven Grand | Maricopa | 98 0139764 | 7N | 4W | 25 | 20 | 1 | \$ 15 |
| 213 | 20 | 356553 | Au Sum 1 | Yavapai | 2016-0019091 | 10N | 2E | 29,32 | 20 | 1 | \$ 15 |
| 214 | 20 | 437448 | Au Sum 2 | Yavapai | 2016-0019092 | 10N | 2E | 28,33 | 20 | 1 | \$ 15 |
| 215 | 21 | 64830 | Catclaw | Yavapai | 0912 239 | 9N | 4W | 6 | 20 | 1 | \$ 15 |
| 216 | 21 | 350910 | Devils Nest AU 12 | Yavapai | 3620 62 | 9N | 4W | 6 | 20 | 1 | \$ 15 |

RRPC - Inter Claims List as of January 1, 2017

\$ 43,245

279 \$ 155.00

| # | Map | AMC # | Claim Name | County | Cnty Recorder Data Record/Book Page | Township | Range | Section | Total Acres | 20 Acre Segments | Maint. Fe |
|-----|-----|--------|-------------------|---------|--|----------|-------|---------|----------------|---------------------|-----------|
| 217 | 21 | 350907 | Devils Nest AU 9 | Yavapai | 3620 60 | 9N | 4W | 6 | 20 | 1 | \$ 155 |
| 218 | 21 | 251044 | Faith #3 | Yavapai | 1812 836 | 9N | 5W | 13 | 20 | 1 | \$ 155 |
| 219 | 21 | 350905 | King Duck II | Yavapai | 4247 552 | 10N/9N | 4W/4W | 31/6 | 20 | 1 | \$ 155 |
| 220 | 21 | 429708 | Leave No Holes 1 | Yavapai | 2014-0040513 | 9N | 5W | 12 | 20 | 1 | \$ 155 |
| 221 | 21 | 429709 | Leave No Holes 2 | Yavapai | 2014-0040514 | 9N | 5W | 12 | 20 | 1 | \$ 155 |
| 222 | 21 | 429710 | Leave No Holes 3 | Yavapai | 2014-0040515 | 9N | 5W | 12 | 20 | 1 | \$ 155 |
| 223 | 21 | 429711 | Leave No Holes 4 | Yavapai | 2014-0040516 | 9N | 5W | 12 | 20 | 1 | \$ 155 |
| 224 | 21 | 429712 | Leave No Holes 5 | Yavapai | 2014-0040517 | 9N | 5W | 12 | 20 | 1 | \$ 155 |
| 225 | 21 | 429713 | Leave No Holes 6 | Yavapai | 2014-0040518 | 9N | 5W | 12 | 20 | 1 | \$ 155 |
| 226 | 21 | 429714 | Leave No Holes 7 | Yavapai | 2014-0040519 | 9N | 5W | 12 | 20 | 1 | \$ 155 |
| 227 | 21 | 429715 | Leave No Holes 8 | Yavapai | 2014-0040520 | 9N | 5W | 12 | 20 | 1 | \$ 155 |
| 228 | 21 | 350906 | Little Terry | Yavapai | 4247 551 | 9N | 4W | 6 | 20 | 1 | \$ 155 |
| 229 | 21 | 251047 | Lords Blessing | Yavapai | 1803 415 | 9N | 5W | 13 | 20 | 1 | \$ 155 |
| 230 | 21 | 68531 | Thomason | Yavapai | 0121 511 | 9N | 4W | 7 | 20 | 1 | \$ 155 |
| 231 | 22 | 429675 | C-6 Placer 1 | La Paz | 2014-02950 | 4N | 20W | 23 | 20 | 1 | \$ 155 |
| 232 | 22 | 429676 | C-6 Placer 2 | La Paz | 2014-02951 | 4N | 20W | 23 | 20 | 1 | \$ 155 |
| 233 | 22 | 429677 | C-6 Placer 3 | La Paz | 2014-02952 | 4N | 20W | 23 | 20 | 1 | \$ 155 |
| 234 | 22 | 429678 | CD7 Placer 1 | La Paz | 2014-02953 | 4N | 20W | 15 | 20 | 1 | \$ 155 |
| 235 | 22 | 429679 | CD7 Placer 2 | La Paz | 2014-02954 | 4N | 20W | 15 | 20 | 1 | \$ 155 |
| 236 | 22 | 429680 | CD7 Placer 3 | La Paz | 2014-02955 | 4N | 20W | 15 | 20 | 1 | \$ 155 |
| 237 | 22 | 429681 | CD7 Placer 4 | La Paz | 2014-02956 | 4N | 20W | 14 | 20 | 1 | \$ 155 |
| 238 | 22 | 429682 | CD7 Placer 5 | La Paz | 2014-02957 | 4N | 20W | 23 | 20 | 1 | \$ 155 |
| 239 | 22 | 429683 | CD7 Placer 6 | La Paz | 2014-02958 | 4N | 20W | 23 | 20 | 1 | \$ 155 |
| 240 | 22 | 429691 | D6 Placer 1 | La Paz | 2014-02946 | 4N | 20W | 26 | 20 | 1 | \$ 155 |
| 241 | 22 | 429692 | D6 Placer 2 | La Paz | 2014-02947 | 4N | 20W | 26 | 20 | 1 | \$ 155 |
| 242 | 22 | 433937 | Diablo Placer 1 | La Paz | 2015-03207 | 4N | 20W | 24 | 20 | 1 | \$ 155 |
| 243 | 22 | 433938 | Diablo Placer 2 | La Paz | 2015-03208 | 4N | 20W | 24 | 20 | 1 | \$ 155 |
| 244 | 22 | 433939 | Diablo Placer 3 | La Paz | 2015-03209 | 4N | 20W | 23 | 20 | 1 | \$ 155 |
| 245 | 22 | 433940 | Diablo Placer 4 | La Paz | 2015-03210 | 4N | 20W | 23 | 20 | 1 | \$ 155 |
| 246 | 22 | 440315 | Diablo Placer 5 | La Paz | 2016-03907 | 4N | 20W | 23 | 20 | 1 | \$ 155 |
| 247 | 22 | 440316 | Diablo Placer 6 | La Paz | 2016-03908 | 4N | 20W | 23 | 20 | 1 | \$ 155 |
| 248 | 22 | 440317 | Diablo Placer 7 | La Paz | 2016-03909 | 4N | 20W | 23 | 20 | 1 | \$ 155 |
| 249 | 22 | 440318 | Diablo Placer 8 | La Paz | 2016-03910 | 4N | 20W | 23 | 10 | 1 | \$ 155 |
| 250 | 22 | 435566 | Eastside Placer 1 | La Paz | 2015-04234 | 4N | 20W | 23 | 20 | 1 | \$ 155 |
| 251 | 22 | 435567 | Eastside Placer 2 | La Paz | 2015-04236 | 4N | 20W | 23 | 20 | 1 | \$ 155 |
| 252 | 22 | 435568 | Eastside Placer 3 | La Paz | 2015-04235 | 4N | 20W | 23 | 10 | 1 | \$ 155 |
| 253 | 23 | 326754 | Keystone #1 | Pinal | 1922 836 | 5S | 15E | 4 | 20 | 1 | \$ 155 |
| 254 | 23 | 326764 | Keystone #11 | Pinal | 1922 856 | 5S | 15E | 4 | 20 | 1 | \$ 155 |
| 255 | 23 | 326765 | Keystone #12 | Pinal | 1922 858 | 5S | 15E | 4 | 20 | 1 | \$ 155 |
| 256 | 23 | 326757 | Keystone #4 | Pinal | 1922 842 | 5S | 15E | 4 | 20 | 1 | \$ 155 |
| 257 | 23 | 326758 | Keystone #5 | Pinal | 1922 844 | 5S | 15E | 4 | 20 | 1 | \$ 155 |
| 258 | 23 | 326760 | Keystone #7 | Pinal | 1922 848 | 5S | 15E | 4 | 20 | 1 | \$ 155 |
| 259 | 23 | 326761 | Keystone #8 | Pinal | 1922 850 | 5S | 15E | 4 | 20 | 1 | \$ 155 |
| 260 | 23 | 326762 | Keystone #9 | Pinal | 1922 852 | 5S | 15E | 4 | 20 | 1 | \$ 155 |
| 261 | 26 | 429669 | Bumble Bee King 1 | Yavapai | 2014-0040521 | 9N | 2E | 5 | 20 | 1 | \$ 155 |
| 262 | 26 | 429670 | Bumble Bee King 2 | Yavapai | 2014-0040522 | 9N | 2E | 5 | 20 | 1 | \$ 155 |
| 263 | 26 | 429671 | Bumble Bee King 3 | Yavapai | 2014-0040523 | 9N | 2E | 5 | 20 | 1 | \$ 155 |
| 264 | 26 | 429672 | Bumble Bee King 4 | Yavapai | 2014-0040524 | 9N | 2E | 5 | 20 | 1 | \$ 155 |
| 265 | 26 | 429673 | Bumble Bee King 5 | Yavapai | 2014-0040525 | 9N | 2E | 5 | 20 | 1 | \$ 155 |
| 266 | 26 | 429674 | Bumble Bee King 6 | Yavapai | 2014-0040526 | 9N | 2E | 5 | 20 | 1 | \$ 155 |
| 267 | 27 | 314304 | Oro De Valenzuela | Yavapai | 3436 378 | 11N | 1E | 14 | 20 | 1 | \$ 155 |
| 268 | 28 | 364340 | Mary Francis | Yavapai | 3824744 4236 718 | 13N | 1E | 29 | 16 | 1 | \$ 155 |

5,468.9 279 \$ 43,245
 279 segments x \$155 = \$ 43,245

Bureau of Land Management

PHOENIX, ARIZONA

2017 AUG 16 P 12:46

RECEIVED
 STATE OFFICE

268
 R-3940163

Maint. fee

United States Department of the Interior
Bureau of Land Management
 DIV OF LANDS, MINRLS & ENERGY
 ONE N CENTRAL AVE
 PHOENIX, AZ 85004 -4427
 Phone: 602-417-9200

Receipt

No: 3940163

| | |
|--|--|
| Transaction #: 4049817 | |
| Date of Transaction: 08/16/2017 | |
| CUSTOMER: | |
| ROADRUNNER PROSPECTORS CLUB INC PO BOX 56804 PHOENIX, AZ 85079-6804 US | |

| LINE # | QTY | DESCRIPTION | REMARKS | UNIT PRICE | TOTAL |
|---------------|------|--|------------------|------------|--------------------|
| 1 | 1.00 | LOCATABLE MINERALS / MINING CLAIMS- NOT NEW-UNADJUD, ONE AUTH NO. ONLY / MINING CLAIM MONEY RECEIVED CASES: AMC374513/\$43245.00 | 2018 MAINT (268) | - n/a - | 43245.00 |
| TOTAL: | | | | | \$43,245.00 |

| PAYMENT INFORMATION | | | |
|---------------------|-----------|---|----------------------|
| 1 | AMOUNT: | 43245.00 | POSTMARKED: N/A |
| | TYPE: | CHECK | RECEIVED: 08/16/2017 |
| | CHECK NO: | 9257 | |
| | NAME: | ROADRUNNER PROSPECTORS CLUB INC PO BOX 56804 PHOENIX AZ 85079-6804 US | |

| |
|---------|
| REMARKS |
| |

This receipt was generated by the automated BLM Collections and Billing System and is a paper representation of a portion of the official electronic record contained therein.

11413 102389 247112 328593
 48 126534 251042 328689
 62606 129334 254410 328742
 64830 130488 258455 329013
 68526 142355 291104 329318
 74734 157621 300332 329388
 76950 170911 313473 329800
 82212 174224 314626 331232
 89414 196365 321061 331455
 95198 235841 326311 333426
 96051 236096 326754 338207
 244561 327772 339964
 328302 348628
 350275
 350903

MAINTENANCE FEE PAYMENT

Claimant Name: Roadrunner Prospectors' Club
 Address: PO Box 56804
 City: Phoenix State: AZ Zip: 85079
 Telephone: 602 274-2521
 E-mail address: rrpc-office@roadrunnergold.com
 Signature: _____

Check here if this is a change of address.

BLM
Date
Stamp

2016 AUG 10 P 1:19

PHOENIX, ARIZONA

RECEIVED
BLM AZ STATE OFFICE

356380
356553
358378
358379
362558
364340
364688
364820
365711
366267
368415
371350
371802
374274
374511

| LINE NO. | AMC NUMBER | CLAIM/SITE NAME | COUNTY RECORDER DATA (If available) | TWP | RNG | SEC |
|----------|------------|-----------------|-------------------------------------|-----|-----|-----|
| 1 | | | | | | |
| 2 | | | | | | |
| 3 | | | | | | |
| 4 | | | | | | |
| 5 | | (SEE ATTACHED) | | | | |
| 6 | | | | | | |
| 7 | | | | | | |
| 8 | | | | | | |
| 9 | | | | | | |
| 10 | | | | | | |

374726
406356
407030
410363
411385
427324
429664
430534
430611
433937
435083
435561
437448
437934

List additional claims on Form MCF114.

20-ac No. of Claims*: 267 x \$155 = \$41385.00
 segments = 278
 Check No.: 9073 Init. ES
 Receipt No.: 3625476
 For BLM Use Only

Bureau of Land Management
 Arizona State Office
www.blm.gov/az/

* \$155 per lode mining claim, mill site, or tunnel site; and \$155 for each 20 acres or portion thereof for each placer mining claim.

Form: MCF112
 Revised July 2014

ENTERED
 AUG 12 2016
 BY: JD

This form is available from the Arizona Geological Survey and may be reproduced.

RRPC Master Claims List as of August, 2016

\$ 43,090

278 \$ 155.00

| Seq. # | AMC # | Claim Name | County | Cnty Recorder Data Record/Book Page | Township | Range | Section | Total Acres | 20 Acre Segments | Maint. Fee |
|--------|--------|---------------------|----------|--|-----------|-------|---------|----------------|---------------------|------------|
| 1 | 11413 | Wednesday Hope #4 | Yavapai | 1015 726, 1799 33, 1569 374 | 9.5N/10N | 2E/2E | 20/32 | 20 | 1 | \$ 155 |
| 2 | 48976 | Aquarius #1 | Yavapai | 0801 192 *** | 10N | 2E | 7 | 20 | 1 | \$ 155 |
| 3 | 48977 | Aquarius #3 | Yavapai | 0801 194 *** | 10N | 2E | 7, 18 | 20 | 1 | \$ 155 |
| 4 | 62606 | Aquarius #2 | Yavapai | 1001 437 | 10N | 2E | 7 | 20 | 1 | \$ 155 |
| 5 | 64830 | Catclaw | Yavapai | 0912 239 | 9N | 4W | 6 | 20 | 1 | \$ 155 |
| 6 | 68531 | Thomason | Yavapai | 0121 511 | 9N | 4W | 7 | 20 | 1 | \$ 155 |
| 7 | 74736 | Sharon Lee #3 | Yavapai | 0912 399 | 10N | 1E | 2 | 20 | 1 | \$ 155 |
| 8 | 76951 | Merciful Heavens #2 | Yavapai | 1329 344 | 12N/11N | 1W/1W | 33/4 | 20 | 1 | \$ 155 |
| 9 | 82213 | Bean Bag #1 | Yavapai | 0965 338, 1252 276 | 12N | 1W | 28 | 20 | 1 | \$ 155 |
| 10 | 89420 | Wolf #1 | Yavapai | 0961 673, 90 203541 | 11.5N | 1E | 31 | 20 | 1 | \$ 155 |
| 11 | 89421 | Wolf #2 | Yavapai | 0961 674, 2207 41 | 11.5N | 1E | 31 | 20 | 1 | \$ 155 |
| 12 | 89422 | Wolf #3 | Yavapai | 0961 675, 2207 41 | 11.5N | 1E | 31 | 20 | 1 | \$ 155 |
| 13 | 89423 | Wolf #4 | Yavapai | 0961 676, 2207 41 | 11.5N/11N | 1E/1E | 31/6 | 20 | 1 | \$ 155 |
| 14 | 95198 | Gold Palace I | Yavapai | 1256 447 | 12N | 1W | 19 | 20 | 1 | \$ 155 |
| 15 | 95199 | Gold Palace II | Yavapai | 1256 450 | 12N | 1W | 19 | 20 | 1 | \$ 155 |
| 16 | 95200 | Gold Palace III | Yavapai | 1256 453 | 12N | 1W | 19 | 20 | 1 | \$ 155 |
| 17 | 95201 | Gold Palace IV | Yavapai | 1256 456 | 12N | 1W | 19 | 20 | 1 | \$ 155 |
| 18 | 95202 | Gold Palace V | Yavapai | 1256 459 | 12N | 1W | 19 | 20 | 1 | \$ 155 |
| 19 | 95203 | Gold Palace VI | Yavapai | 1256 462 | 12N | 1W | 19 | 20 | 1 | \$ 155 |
| 20 | 95204 | Gold Palace VII | Yavapai | 1256 465 | 12N | 1W | 19 | 20 | 1 | \$ 155 |
| 21 | 95205 | Gold Palace VIII | Yavapai | 1256 468 | 12N | 1W | 30 | 20 | 1 | \$ 155 |
| 22 | 96051 | JDR #1 | Yavapai | 1267 825 | 12.5N | 2W | 21 | 20 | 1 | \$ 155 |
| 23 | 96052 | JDR #2 | Yavapai | 1267 827 | 12.5N | 2W | 21 | 20 | 1 | \$ 155 |
| 24 | 96053 | JDR #3 | Yavapai | 1267 829 | 12.5N/13N | 2W/2W | 21/33 | 20 | 1 | \$ 155 |
| 25 | 102389 | Mandala 2 & 3 | Yavapai | 1293 289 | 10N | 2E | 30 | 20 | 1 | \$ 155 |
| 26 | 126535 | Mandala 7 | Yavapai | 1371 337 | 10N | 2E | 30 | 20 | 1 | \$ 155 |
| 27 | 126536 | Mandala 8 | Yavapai | 1371 339 | 10N | 2E | 30 | 20 | 1 | \$ 155 |
| 28 | 126537 | Mandala 9 | Yavapai | 1371 341 | 10N | 2E | 30 | 20 | 1 | \$ 155 |
| 29 | 126538 | Mandala 10 | Yavapai | 1371 343 | 10N | 2E | 31 | 20 | 1 | \$ 155 |
| 30 | 129334 | Mandala 12 | Yavapai | 1376 706 | 10N | 2E | 30 | 20 | 1 | \$ 155 |
| 31 | 130489 | Protecto 2 | Yavapai | 1381 826 | 12N | 1W | 33 | 20 | 1 | \$ 155 |
| 32 | 142356 | Donkey Mine #4 | Yavapai | 1422 292 | 12N | 1W | 33 | 20 | 1 | \$ 155 |
| 33 | 157621 | Mandala 14 | Yavapai | 1437 981 | 10N | 2E | 30 | 20 | 1 | \$ 155 |
| 34 | 170911 | Wednesday Hope #1 | Yavapai | 1467 691 | 10N | 2E | 31 | 20 | 1 | \$ 155 |
| 35 | 174224 | Big Rock #1 | Yavapai | 1469 76 | 12N | 1W | 10, 11 | 20 | 1 | \$ 155 |
| 36 | 174225 | Big Rock #2 | Yavapai | 1469 78 | 12N | 1W | 10 | 20 | 1 | \$ 155 |
| 37 | 191670 | Roadrunner #1 | Yavapai | 1514 754 | 12.5N | 1W | 25 | 12.85 | 1 | \$ 155 |
| 38 | 191671 | Roadrunner #2 | Yavapai | 1514 756 | 12.5N | 1W | 25 | 20 | 1 | \$ 155 |
| 39 | 196365 | Turkey Buzzard #1 | Yavapai | 1529 712 | 11N | 3E | 30 | 13.77 | 1 | \$ 155 |
| 40 | 235841 | Betty #4 | Yavapai | 1713 778 | 12N | 1W | 14 | 20 | 1 | \$ 155 |
| 41 | 235842 | Betty #5 | Yavapai | 1713 780 | 12N | 1W | 14 | 20 | 1 | \$ 155 |
| 42 | 236096 | Gary's Place #1A | Yavapai | 1714 193 | 12N | 1W | 14 | 20 | 1 | \$ 155 |
| 43 | 244561 | Gold Dust #2 | Yavapai | 1781 510 | 11N | 3E | 30 | 6.88 | 1 | \$ 155 |
| 44 | 247112 | Sando | Maricopa | 85 0559653 | 7N | 3W | 28 | 20 | 1 | \$ 155 |
| 45 | 251044 | Faith #3 | Yavapai | 1812 836 | 9N | 5W | 13 | 20 | 1 | \$ 155 |
| 46 | 251047 | Lords Blessing | Yavapai | 1803 415 | 9N | 5W | 13 | 20 | 1 | \$ 155 |
| 47 | 254410 | Jackass | Yavapai | 4069 605 | 11N | 1E | 34, 35 | 19.97 | 1 | \$ 155 |
| 48 | 254411 | Jenny | Yavapai | 4069 602 | 11N | 1E | 34 | 20 | 1 | \$ 155 |
| 49 | 254412 | Hinny | Yavapai | 4069 601, 1341 96, 1807 656 | 11N | 1E | 34 | 16.22 | 1 | \$ 155 |
| 50 | 258455 | Turkey Buzzard Ext. | Yavapai | 1838 870 | 11N | 3E | 30 | 10 | 1 | \$ 155 |
| 51 | 258456 | Turkey Buzzard #2 | Yavapai | 1838 872 | 11N | 3E | 30 | 20 | 1 | \$ 155 |
| 52 | 258457 | Turkey Buzzard #3 | Yavapai | 1838 874 | 11N | 3E | 30 | 20 | 1 | \$ 155 |
| 53 | 258458 | Turkey Buzzard #4 | Yavapai | 1838 876 | 11N | 3E | 30 | 20 | 1 | \$ 155 |
| 54 | 291104 | Cas #2 | Maricopa | 92 0366284, 88 598383 | 7N | 3W | 29 | 20 | 1 | \$ 155 |
| 55 | 300332 | Wolf #5 | Yavapai | 2208 526 | 11.5N | 1E | 31 | 20 | 1 | \$ 155 |
| 56 | 300333 | Wolf #6 | Yavapai | 2208 524 | 11N | 1E | 5, 6 | 20 | 1 | \$ 155 |
| 57 | 313473 | Patriot 1 | Yavapai | 2347 704 | 11N | 1W | 4 | 20 | 1 | \$ 155 |
| 58 | 313474 | Patriot 2 | Yavapai | 2347 706 | 11N | 1W | 3, 4 | 20 | 1 | \$ 155 |
| 59 | 313475 | Patriot 3 | Yavapai | 2347 708 | 11N | 1W | 3 | 20 | 1 | \$ 155 |
| 60 | 313476 | Patriot 4 | Yavapai | 2347 710 | 11N | 1W | 3 | 20 | 1 | \$ 155 |
| 61 | 313477 | Patriot 5 | Yavapai | 2347 712 | 11N | 1W | 3 | 20 | 1 | \$ 155 |
| 62 | 314304 | Oro De Valenzuela | Yavapai | 3436 378 | 11N | 1E | 14 | 20 | 1 | \$ 155 |
| 63 | 314631 | RR-Humbug #3 | Yavapai | 2360 845 | 8N | 1E | 29, 30 | 20 | 1 | \$ 155 |
| 64 | 321061 | Lefty #2 | Yavapai | 2479 560 | 8N | 1E | 29, 30 | 20 | 1 | \$ 155 |
| 65 | 326312 | Carrie 2-1 | Maricopa | 2016-0222161 | 7N | 3W | 31 | 20 | 1 | \$ 155 |
| 66 | 326313 | Carrie #3 | Maricopa | 93 0174160 | 7N | 3W | 30 | 20 | 1 | \$ 155 |
| 67 | 326314 | Carrie #4 | Maricopa | 93 0174159 | 7N | 3W | 29 | 20 | 1 | \$ 155 |
| 68 | 326315 | Pennyweight 1-1 | Maricopa | 2016-0222163 | 7N | 3W | 29 | 20 | 1 | \$ 155 |
| 69 | 326316 | Pennyweight #2 | Maricopa | 93 0174156 | 7N | 3W | 29 | 20 | 1 | \$ 155 |
| 70 | 326319 | Pat | Maricopa | 93 0174152 | 7N | 3W | 29 | 20 | 1 | \$ 155 |

RECEIVED
 2016 AUG 10 PM 1:19
 HONOLULU, HAWAII

RRPC Master Claims List as of August, 2016

\$ 43,090

278 \$ 155.00

| Seq. # | AMC # | Claim Name | County | Cnty Recorder Data Record/Book Page | Township | Range | Section | Total Acres | 20 Acre Segments | Maint. Fee |
|--------|--------|------------------------|----------|--|----------|-------|-------------|----------------|---------------------|------------|
| 71 | 326322 | Double R | Maricopa | 12 0735517 | 6N | 4W | 12 | 80 | 4 | \$ 620 |
| 72 | 326325 | Jake #3 | Maricopa | 93 0174145 | 7N | 3W | 29 | 20 | 1 | \$ 155 |
| 73 | 326327 | Pilgrim #1 | Maricopa | 93 0174153 | 7N | 3W | 31 | 20 | 1 | \$ 155 |
| 74 | 326754 | Keystone #1 | Pinal | 1922 836 | 5S | 15E | 4 | 20 | 1 | \$ 155 |
| 75 | 326757 | Keystone #4 | Pinal | 1922 842 | 5S | 15E | 4 | 20 | 1 | \$ 155 |
| 76 | 326758 | Keystone #5 | Pinal | 1922 844 | 5S | 15E | 4 | 20 | 1 | \$ 155 |
| 77 | 326760 | Keystone #7 | Pinal | 1922 848 | 5S | 15E | 4 | 20 | 1 | \$ 155 |
| 78 | 326761 | Keystone #8 | Pinal | 1922 850 | 5S | 15E | 4 | 20 | 1 | \$ 155 |
| 79 | 326762 | Keystone #9 | Pinal | 1922 852 | 5S | 15E | 4 | 20 | 1 | \$ 155 |
| 80 | 326764 | Keystone #11 | Pinal | 1922 856 | 5S | 15E | 4 | 20 | 1 | \$ 155 |
| 81 | 326765 | Keystone #12 | Pinal | 1922 858 | 5S | 15E | 4 | 20 | 1 | \$ 155 |
| 82 | 326772 | Range Bull # 1 | Maricopa | 93 0362063 | 7N | 3W | 21 | 20 | 1 | \$ 155 |
| 83 | 327930 | Red Bird # 7 | Maricopa | 93 0897433 | 7N | 3W | 17 | 20 | 1 | \$ 155 |
| 84 | 327931 | Red Bird # 8 | Maricopa | 93 0897432 | 7N | 3W | 20 | 20 | 1 | \$ 155 |
| 85 | 328302 | Red Bird # 9 | Maricopa | 93 0897431 | 7N | 3W | 17 | 20 | 1 | \$ 155 |
| 86 | 328593 | Ceedee #2 | Yavapai | 2742 961 | 8N | 1W | 5 | 20 | 1 | \$ 155 |
| 87 | 328594 | Ceedee #3 | Yavapai | 2742 963 | 8N | 1W | 5 | 20 | 1 | \$ 155 |
| 88 | 328595 | Ceedee #4 | Yavapai | 2742 965 | 8N | 1W | 5 | 20 | 1 | \$ 155 |
| 89 | 328597 | Ceedee #7 | Yavapai | 2742 969 | 8N | 1W | 4 | 20 | 1 | \$ 155 |
| 90 | 328598 | Ceedee #8 | Yavapai | 2742 971 | 8N | 1W | 4 | 20 | 1 | \$ 155 |
| 91 | 328605 | Burro #1 | Yavapai | 2742 987 | 12N | 1W | 33 | 20 | 1 | \$ 155 |
| 92 | 328606 | Burro #2 | Yavapai | 2742 985 | 11N | 1W | 4 | 20 | 1 | \$ 155 |
| 93 | 328698 | Cass No. 4 | Maricopa | 93 0885578 | 7N | 3W | 29 | 20 | 1 | \$ 155 |
| 94 | 328699 | Cass No. 5 | Maricopa | 93 0885577 | 7N | 3W | 29 | 20 | 1 | \$ 155 |
| 95 | 328700 | Cass No. 6 | Maricopa | 93 0885576 | 7N | 3W | 29 | 20 | 1 | \$ 155 |
| 96 | 328701 | Cass No. 7 | Maricopa | 93 0885575 | 7N | 3W | 29 | 20 | 1 | \$ 155 |
| 97 | 328702 | Cass No. 8 | Maricopa | 93 0885574 | 7N | 3W | 29 | 20 | 1 | \$ 155 |
| 98 | 328703 | Ceedee #1 | Yavapai | 2746 703 | 8N | 1W | 5 | 20 | 1 | \$ 155 |
| 99 | 328704 | Ceedee #5 | Yavapai | 2746 705 | 8N | 1W | 5 | 20 | 1 | \$ 155 |
| 100 | 328705 | Genes Dream | Yavapai | 2746 707 | 9.5N | 2E | 20, 21 | 20 | 1 | \$ 155 |
| 101 | 328742 | Red Bird #11 | Yavapai | 2754 072 | 10N | 1E | 1 | 40 | 2 | \$ 310 |
| 102 | 329020 | RR #1 | Maricopa | 94 0021782 | 6N | 4W | 1 | 20 | 1 | \$ 155 |
| 103 | 329021 | RR #2 | Maricopa | 94 0021783 | 6N | 4W | 1 | 20 | 1 | \$ 155 |
| 104 | 329022 | RR #3 | Maricopa | 94 0021784 | 6N | 4W | 1 | 20 | 1 | \$ 155 |
| 105 | 329023 | RR #4 | Maricopa | 94 0021785 | 6N | 4W | 1 | 20 | 1 | \$ 155 |
| 106 | 329318 | Mercer's Place | Yavapai | 2777 216, 3288 700 | 11N | 1W | 4 | 20 | 1 | \$ 155 |
| 107 | 329388 | Bad Luck | Yavapai | 2780 912 | 12N | 1W | 14, 23 | 20 | 1 | \$ 155 |
| 108 | 329389 | No Luck | Yavapai | 2780 914 | 12N | 1W | 23 | 20 | 1 | \$ 155 |
| 109 | 329390 | Good Luck | Yavapai | 2780 916 | 12N | 1W | 23, 24 | 20 | 1 | \$ 155 |
| 110 | 329391 | Great Luck | Yavapai | 2780 918 | 12N | 1W | 24 | 20 | 1 | \$ 155 |
| 111 | 329392 | Clinton | Yavapai | 2780 920 | 12N/12N | 1W/2W | 30/25 | 20 | 1 | \$ 155 |
| 112 | 329393 | Clyde | Yavapai | 2780 922 | 12N/12N | 1W/2W | 30/25 | 20 | 1 | \$ 155 |
| 113 | 329394 | Bonny | Yavapai | 2780 924 | 12N | 1W | 30 | 20 | 1 | \$ 155 |
| 114 | 329800 | Gypsy Moth 1 | Maricopa | 94 0218517 | 7N | 3W | 21 | 20 | 1 | \$ 155 |
| 115 | 329801 | Gypsy Moth 2 | Maricopa | 94 0218518 | 7N | 3W | 21 | 20 | 1 | \$ 155 |
| 116 | 331233 | Red Basin #1 | Maricopa | 14 0184527 | 6N | 6W | 26 | 145.45 | 8 | \$ 1,240 |
| 117 | 331455 | Chris #1 | Yavapai | 2919 631 | 12N | 2W | 36 | 20.0 | 1 | \$ 155 |
| 118 | 333426 | La Siesta #1 | Maricopa | 95 0185054 | 7N | 3W | 30 | 20 | 1 | \$ 155 |
| 119 | 333427 | La Siesta #3 | Maricopa | 95 0185055 | 7N | 3W | 30 | 20 | 1 | \$ 155 |
| 120 | 338207 | Seven Grand | Maricopa | 98 0139764 | 7N | 4W | 25 | 20 | 1 | \$ 155 |
| 21 | 339964 | RR #5 | Maricopa | 96 0488373 | 6N | 4W | 1 | 20 | 1 | \$ 155 |
| 22 | 339965 | RR #6 | Maricopa | 96 0488374 | 6N | 4W | 1 | 20 | 1 | \$ 155 |
| 23 | 348628 | Vira Anne 1 | Yavapai | 2015-0008296 | 12.5N | 1W | 27 | 17.3 | 1 | \$ 155 |
| 24 | 350275 | Gold Bug | Maricopa | 98 0535738 | 6N | 6W | 26 | 20 | 1 | \$ 155 |
| 25 | 350276 | Gold Master | Maricopa | 98 0535739 | 6N | 6W | 26 | 20 | 1 | \$ 155 |
| 26 | 350277 | Lobo | Maricopa | 98 0535740 | 6N | 6W | 26 | 20 | 1 | \$ 155 |
| 27 | 350278 | Mine Lab | Maricopa | 98 0535741 | 6N | 6W | 26 | 20 | 1 | \$ 155 |
| 28 | 350279 | Webster Mine | Maricopa | 98 0535742 | 6N | 6W | 26 | 20 | 1 | \$ 155 |
| 29 | 350280 | Whistler | Maricopa | 98 0535743 | 6N | 6W | 26 | 20 | 1 | \$ 155 |
| 30 | 350281 | Wickenburg | Maricopa | 98 0535744 | 6N | 6W | 26 | 20 | 1 | \$ 155 |
| 31 | 350905 | King Duck II | Yavapai | 4247 552 | 10N/9N | 4W/4W | 31/6 | 20 | 1 | \$ 155 |
| 32 | 350906 | Little Terry | Yavapai | 4247 551 | 9N | 4W | 20 | 20 | 1 | \$ 155 |
| 33 | 350907 | Devils Nest AU 9 | Yavapai | 3620 60 | 9N | 4W | 6 | 20 | 1 | \$ 155 |
| 34 | 350910 | Devils Nest AU 12 | Yavapai | 3620 62 | 9N | 4W | 6 | 20 | 1 | \$ 155 |
| 35 | 356382 | Ducbill #1 | Yavapai | 27429 1402 63 | 12N | 1W | 17 | 20 | 1 | \$ 155 |
| 36 | 356383 | Ducbill #2 | Yavapai | 27430 1402 65 | 12N | 1W | 17 | 20 | 1 | \$ 155 |
| 37 | 356553 | Au Sum 1 | Yavapai | 2016-0019091 | 10N | 2E | 29,32 | 20 | 1 | \$ 155 |
| 38 | 358378 | Hidden Treasure | Yavapai | 3633816 4076 796 | 12N/12N | 1W/2W | 30,31/25,89 | 20 | 1 | \$ 155 |
| 39 | 358379 | Aquarious Ext. West #1 | Yavapai | 3633817 4076 797 | 10N | 2E | 18 | 20 | 1 | \$ 155 |
| 40 | 358380 | Aquarious Ext. West #2 | Yavapai | 3633818 4076 798 | 10N | 2E | 18 | 20 | 1 | \$ 155 |

| Seq. # | AMC # | Claim Name | County | Cnty Recorder Data Record/Book Page | Township | Range | Section | Total Acres | 20 Acre Segments | Maint. Fee |
|--------|--------|-----------------------|----------|--|-----------|-------|-------------|----------------|---------------------|------------|
| 141 | 358381 | Aquarius Ext. West #3 | Yavapai | 3633819 4076 799 | 10N | 2E | 18 | 20 | 1 | \$ 155 |
| 142 | 358382 | Aquarius Ext. West #4 | Yavapai | 3633820 4076 800 | 10N | 2E | 18 | 20 | 1 | \$ 155 |
| 143 | 362558 | Holly Marie | Yavapai | 3769442 4190 312 | 9.5N | 2E | 20, 21 | 11.45 | 1 | \$ 155 |
| 144 | 364340 | Mary Francis | Yavapai | 3824744 4236 718 | 13N | 1E | 29 | 16 | 1 | \$ 155 |
| 145 | 364688 | RR #7 | Maricopa | 05 0477984 | 6N | 4W | 1 | 20 | 1 | \$ 155 |
| 146 | 364689 | RR #8 | Maricopa | 05 0477985 | 6N | 4W | 1 | 20 | 1 | \$ 155 |
| 147 | 364821 | Ray's Right Place | Yavapai | 3837647 4247 553 | 12N | 1W | 24 | 17.0 | 1 | \$ 155 |
| 148 | 365711 | Diggens Paradise | Yavapai | 3864391 4269 775 | 12.5N | 1W | 26 | 17.1 | 1 | \$ 155 |
| 149 | 366267 | Cobi's Gold | Yavapai | 4281 505 | 11.5N | 1E | 19 | 20 | 1 | \$ 155 |
| 150 | 366268 | Renee's Best Chance | Yavapai | 4281 507 | 13N | 3W | 32 | 20 | 1 | \$ 155 |
| 151 | 366269 | Rough Road | Yavapai | 4281 503 | 11.5N | 1E | 30 | 20 | 1 | \$ 155 |
| 152 | 366270 | Stuck Duck | Yavapai | 4281 506 | 13N | 3W | 32 | 20 | 1 | \$ 155 |
| 153 | 366271 | Tegan's Bank | Yavapai | 4281 504 | 11.5N | 1E | 30 | 20 | 1 | \$ 155 |
| 154 | 368415 | Jacks Hideaway | Yavapai | 4308 863 | 13N | 3W | 29 | 20 | 1 | \$ 155 |
| 155 | 371350 | Wilgers Wish | Yavapai | 4372 442 | 13N | 3W | 32 | 20 | 1 | \$ 155 |
| 156 | 371802 | Happy Times | Yavapai | 4390 621 | 13N | 3W | 29, 32 | 20 | 1 | \$ 155 |
| 157 | 371803 | Saddle Tramps | Yavapai | 4390 622 | 13N | 3W | 29 | 20 | 1 | \$ 155 |
| 158 | 374274 | Lori's Place | Maricopa | 06 1491113 | 7N | 3W | 20 | 20 | 1 | \$ 155 |
| 159 | 374275 | Charles' Dream | Maricopa | 06 1491112 | 7N | 3W | 20 | 20 | 1 | \$ 155 |
| 160 | 374511 | Carolyn D | Yavapai | 4444 69 | 13N | 3W | 29 | 20.0 | 1 | \$ 155 |
| 161 | 374512 | Cole Ryan | Yavapai | 2014-0056442 | 12.5N | 1W | 24 | 18.5 | 1 | \$ 155 |
| 162 | 374513 | Caitlin Lisa | Yavapai | 4452 917 | 12.5, 13N | 1W | 23,24,35,36 | 20.0 | 1 | \$ 155 |
| 163 | 374726 | Roslyn's Roost | Maricopa | 06 1445012 | 7N | 3W | 17 | 20 | 1 | \$ 155 |
| 164 | 406356 | Cass No. 9 | Maricopa | 11 0623988 | 7N | 3W | 29 | 20 | 1 | \$ 155 |
| 165 | 407030 | Carols Corner | Maricopa | 11 0623989 | 7N | 3W | 18 | 20 | 1 | \$ 155 |
| 166 | 410363 | Cass # 10 | Maricopa | 11 0735632 | 7N | 3W | 29 | 20 | 1 | \$ 155 |
| 167 | 410364 | Golden Sands | Maricopa | 11 073563 | 7N | 3W | 18 | 20 | 1 | \$ 155 |
| 168 | 411385 | Lucky Seven | Maricopa | 2015-0047844 | 7N | 5W | 3 | 20 | 1 | \$ 155 |
| 169 | 427326 | Rexs' Place | Yavapai | 4914 661 | 11.5N | 1E | 30 | 20 | 1 | \$ 155 |
| 170 | 429669 | Bumble Bee King 1 | Yavapai | 2014-0040521 | 9N | 2E | 5 | 20 | 1 | \$ 155 |
| 171 | 429670 | Bumble Bee King 2 | Yavapai | 2014-0040522 | 9N | 2E | 5 | 20 | 1 | \$ 155 |
| 172 | 429671 | Bumble Bee King 3 | Yavapai | 2014-0040523 | 9N | 2E | 5 | 20 | 1 | \$ 155 |
| 173 | 429672 | Bumble Bee King 4 | Yavapai | 2014-0040524 | 9N | 2E | 5 | 20 | 1 | \$ 155 |
| 174 | 429673 | Bumble Bee King 5 | Yavapai | 2014-0040525 | 9N | 2E | 5 | 20 | 1 | \$ 155 |
| 175 | 429674 | Bumble Bee King 6 | Yavapai | 2014-0040526 | 9N | 2E | 5 | 20 | 1 | \$ 155 |
| 176 | 429675 | C-6 Placer 1 | La Paz | 2014-02950 | 4N | 20W | 23 | 20 | 1 | \$ 155 |
| 177 | 429676 | C-6 Placer 2 | La Paz | 2014-02951 | 4N | 20W | 23 | 20 | 1 | \$ 155 |
| 178 | 429677 | C-6 Placer 3 | La Paz | 2014-02952 | 4N | 20W | 15 | 20 | 1 | \$ 155 |
| 179 | 429678 | CD7 Placer 1 | La Paz | 2014-02953 | 4N | 20W | 15 | 20 | 1 | \$ 155 |
| 180 | 429679 | CD7 Placer 2 | La Paz | 2014-02954 | 4N | 20W | 15 | 20 | 1 | \$ 155 |
| 181 | 429680 | CD7 Placer 3 | La Paz | 2014-02955 | 4N | 20W | 14 | 20 | 1 | \$ 155 |
| 182 | 429681 | CD7 Placer 4 | La Paz | 2014-02956 | 4N | 20W | 23 | 20 | 1 | \$ 155 |
| 183 | 429682 | CD7 Placer 5 | La Paz | 2014-02957 | 4N | 20W | 23 | 20 | 1 | \$ 155 |
| 184 | 429683 | CD7 Placer 6 | La Paz | 2014-02958 | 4N | 20W | 26 | 20 | 1 | \$ 155 |
| 185 | 429691 | D6 Placer 1 | La Paz | 2014-02946 | 4N | 20W | 26 | 20 | 1 | \$ 155 |
| 186 | 429692 | D6 Placer 2 | La Paz | 2014-02947 | 4N | 20W | 29 | 20 | 1 | \$ 155 |
| 187 | 429695 | Jake 1-1 | Maricopa | 2014-0584266 | 7N | 3W | 29 | 20 | 1 | \$ 155 |
| 188 | 429696 | Jake 1-2 | Maricopa | 2014-0584267 | 7N | 3W | 29 | 20 | 1 | \$ 155 |
| 189 | 429697 | Jake 1-3 | Maricopa | 2014-0584268 | 7N | 3W | 29 | 20 | 1 | \$ 155 |
| 190 | 429698 | Jake 1-4 | Maricopa | 2014-0584269 | 7N | 3W | 29 | 20 | 1 | \$ 155 |
| 191 | 429699 | Jake 2-1 | Maricopa | 2014-0584270 | 7N | 3W | 29 | 20 | 1 | \$ 155 |
| 192 | 429700 | Jake 2-2 | Maricopa | 2014-0584271 | 7N | 3W | 29 | 20 | 1 | \$ 155 |
| 193 | 429701 | Jake 2-3 | Maricopa | 2014-0584272 | 7N | 3W | 29 | 20 | 1 | \$ 155 |
| 194 | 429702 | Jake 2-4 | Maricopa | 2014-0584273 | 7N | 3W | 29 | 20 | 1 | \$ 155 |
| 195 | 429703 | Janet Lynn 2-1 | Yavapai | 2014-0040485 | 10N | 1E | 12 | 20 | 1 | \$ 155 |
| 196 | 429708 | Leave No Holes 1 | Yavapai | 2014-0040513 | 9N | 5W | 12 | 20 | 1 | \$ 155 |
| 197 | 429709 | Leave No Holes 2 | Yavapai | 2014-0040514 | 9N | 5W | 12 | 20 | 1 | \$ 155 |
| 198 | 429710 | Leave No Holes 3 | Yavapai | 2014-0040515 | 9N | 5W | 12 | 20 | 1 | \$ 155 |
| 199 | 429711 | Leave No Holes 4 | Yavapai | 2014-0040516 | 9N | 5W | 12 | 20 | 1 | \$ 155 |
| 200 | 429712 | Leave No Holes 5 | Yavapai | 2014-0040517 | 9N | 5W | 12 | 20 | 1 | \$ 155 |
| 201 | 429713 | Leave No Holes 6 | Yavapai | 2014-0040518 | 9N | 5W | 12 | 20 | 1 | \$ 155 |
| 202 | 429714 | Leave No Holes 7 | Yavapai | 2014-0040519 | 9N | 5W | 12 | 20 | 1 | \$ 155 |
| 203 | 429715 | Leave No Holes 8 | Yavapai | 2014-0040520 | 9N | 5W | 12 | 20 | 1 | \$ 155 |
| 204 | 429716 | Ocotillo 1-1 | Maricopa | 2014-0584274 | 7N | 3W | 17, 18 | 20 | 1 | \$ 155 |
| 205 | 429717 | Ocotillo 1-2 | Maricopa | 2014-0584275 | 7N | 3W | 17, 20 | 20 | 1 | \$ 155 |
| 206 | 429718 | Ocotillo 1-3 | Maricopa | 2014-0584276 | 7N | 3W | 17, 20 | 20 | 1 | \$ 155 |
| 207 | 429719 | Ocotillo 1-4 | Maricopa | 2014-0584277 | 7N | 3W | 17, 18 | 20 | 1 | \$ 155 |
| 208 | 429720 | Ocotillo 2-1 | Maricopa | 2014-0584278 | 7N | 3W | 17, 18 | 20 | 1 | \$ 155 |
| 209 | 429721 | Ocotillo 2-2 | Maricopa | 2014-0584279 | 7N | 3W | 17, 18 | 20 | 1 | \$ 155 |
| 210 | 429722 | Ocotillo 2-3 | Maricopa | 2014-0584280 | 7N | 3W | 17, 18 | 20 | 1 | \$ 155 |

RRPC Master Claims List as of August, 2016

\$ 43,090

278 \$ 155.00

| Seq. # | AMC # | Claim Name | County | Cnty Recorder Data Record/Book Page | Township | Range | Section | Total Acres | 20 Acre Segments | Maint. Fee |
|--------|--------|----------------------|----------|-------------------------------------|----------|-------|---------|-------------|------------------|------------|
| 211 | 429723 | Ocotillo 2-4 | Maricopa | 2014-0584281 | 7N | 3W | 17, 18 | 20 | 1 | \$ 155 |
| 212 | 429724 | Randy B 1 | Maricopa | 2014-0584262 | 7N | 3W | 30 | 20 | 1 | \$ 155 |
| 213 | 429725 | Randy B 2 | Maricopa | 2014-0584263 | 7N | 3W | 30 | 20 | 1 | \$ 155 |
| 214 | 429726 | Randy B 3 | Maricopa | 2014-0584264 | 7N | 3W | 30 | 20 | 1 | \$ 155 |
| 215 | 429727 | Randy B 4 | Maricopa | 2014-0584265 | 7N | 3W | 30 | 20 | 1 | \$ 155 |
| 216 | 429728 | RR-Humbug 1-1 | Yavapai | 2014-0040505 | 8N | 1E | 31 | 20 | 1 | \$ 155 |
| 217 | 429729 | RR-Humbug 1-2 | Yavapai | 2014-0040506 | 8N | 1E | 31 | 20 | 1 | \$ 155 |
| 218 | 429730 | RR-Humbug 1-3 | Yavapai | 2014-0040507 | 8N | 1E | 31 | 20 | 1 | \$ 155 |
| 219 | 429731 | RR-Humbug 1-4 | Yavapai | 2014-0040508 | 8N | 1E | 31 | 20 | 1 | \$ 155 |
| 220 | 429732 | RR-Humbug 1-5 | Yavapai | 2014-0040509 | 8N | 1E | 31 | 20 | 1 | \$ 155 |
| 221 | 429733 | RR-Humbug 1-6 | Yavapai | 2014-0040510 | 8N | 1E | 31 | 20 | 1 | \$ 155 |
| 222 | 429734 | RR-Humbug 2-1 | Yavapai | 2014-0040511 | 8N | 1E | 31 | 20 | 1 | \$ 155 |
| 223 | 429735 | RR-Humbug 2-2 | Yavapai | 2014-0040512 | 8N | 1E | 31 | 20 | 1 | \$ 155 |
| 224 | 429736 | Sharon Lee 1-1 | Yavapai | 2014-0040492 | 11N | 1E | 35, 36 | 20 | 1 | \$ 155 |
| 225 | 429737 | Sharon Lee 1-2 | Yavapai | 2014-0040493 | 11N | 1E | 35, 36 | 20 | 1 | \$ 155 |
| 226 | 429738 | Sharon Lee 1-3 | Yavapai | 2014-0040494 | 11N | 1E | 35, 36 | 20 | 1 | \$ 155 |
| 227 | 429739 | Sharon Lee 1-4 | Yavapai | 2014-0040495 | 11N | 1E | 35, 36 | 20 | 1 | \$ 155 |
| 228 | 429740 | Sharon Lee 2-1 | Yavapai | 2014-0040496 | 11N | 1E | 35 | 20 | 1 | \$ 155 |
| 229 | 429741 | Sharon Lee 2-2 | Yavapai | 2014-0040497 | 11N | 1E | 35 | 20 | 1 | \$ 155 |
| 230 | 429742 | Sharon Lee 2-3 | Yavapai | 2014-0040498 | 11N | 1E | 35 | 20 | 1 | \$ 155 |
| 231 | 429743 | Sharon Lee 4-1 | Yavapai | 2014-0040499 | 10N | 1E | 1, 2 | 20 | 1 | \$ 155 |
| 232 | 429744 | Sharon Lee 4-2 | Yavapai | 2014-0040500 | 10N | 1E | 1, 2 | 20 | 1 | \$ 155 |
| 233 | 429745 | Sharon Lee 4-3 | Yavapai | 2014-0040501 | 10N | 1E | 1, 2 | 20 | 1 | \$ 155 |
| 234 | 429746 | Sharon Lee 4-4 | Yavapai | 2014-0040502 | 10N | 1E | 1, 2 | 20 | 1 | \$ 155 |
| 235 | 429747 | Sharon Lee 4-5 | Yavapai | 2014-0040503 | 10N | 1E | 1, 2 | 20 | 1 | \$ 155 |
| 236 | 429748 | Sharon Lee 4-6 | Yavapai | 2014-0040504 | 10N | 1E | 1, 2 | 20 | 1 | \$ 155 |
| 237 | 430534 | Lucky Eight | Maricopa | 2015-0077601 | 7N | 5W | 3 | 20 | 1 | \$ 155 |
| 238 | 430535 | Lucky Nine | Maricopa | 2015-0077602 | 7N | 5W | 3 | 20 | 1 | \$ 155 |
| 239 | 430611 | Vira Anne 2 | Yavapai | 2014-0008298 | 12.5N | 1W | 27 | 16.50 | 1 | \$ 155 |
| 240 | 433937 | Diablo Placer 1 | La Paz | 2015-03207 | 4N | 20W | 24 | 20 | 1 | \$ 155 |
| 241 | 433938 | Diablo Placer 2 | La Paz | 2015-03208 | 4N | 20W | 24 | 20 | 1 | \$ 155 |
| 242 | 433939 | Diablo Placer 3 | La Paz | 2015-03209 | 4N | 20W | 23 | 20 | 1 | \$ 155 |
| 243 | 433940 | Diablo Placer 4 | La Paz | 2015-03210 | 4N | 20W | 23 | 20 | 1 | \$ 155 |
| 244 | 435083 | Aquarius Extension 1 | Yavapai | 2015-0052260 | 10N | 2E | 18 | 20 | 1 | \$ 155 |
| 245 | 435084 | Aquarius Extension 2 | Yavapai | 2015-0052261 | 10N | 2E | 18 | 20 | 1 | \$ 155 |
| 246 | 435085 | Aquarius Extension 3 | Yavapai | 2015-0052262 | 10N | 2E | 18 | 20 | 1 | \$ 155 |
| 247 | 435086 | Aquarius Extension 4 | Yavapai | 2015-0052263 | 10N | 2E | 18 | 20 | 1 | \$ 155 |
| 248 | 435087 | Janet Lynn 2-2 | Yavapai | 2015-0052258 | 10N | 1E | 12, 13 | 15 | 1 | \$ 155 |
| 249 | 435088 | Janet Lynn 2-3 | Yavapai | 2015-0052259 | 10N | 1E | 12, 13 | 15 | 1 | \$ 155 |
| 250 | 435561 | Bean Bag 2-1 | Yavapai | 2015-0055543 | 10N | 2E | 30 | 20 | 1 | \$ 155 |
| 251 | 435562 | Bean Bag 2-2 | Yavapai | 2015-0055544 | 10N | 2E | 30 | 20 | 1 | \$ 155 |
| 252 | 435563 | Diablo Placer 7 | La Paz | 2015-04237 | 4N | 20W | 23 | 20 | 1 | \$ 155 |
| 253 | 435564 | Diablo Placer 6 | La Paz | 2015-04238 | 4N | 20W | 23 | 20 | 1 | \$ 155 |
| 254 | 435565 | Diablo Placer 5 | La Paz | 2015-04239 | 4N | 20W | 23 | 20 | 1 | \$ 155 |
| 255 | 435566 | Eastside Placer 1 | La Paz | 2015-04234 | 4N | 20W | 23 | 20 | 1 | \$ 155 |
| 256 | 435567 | Eastside Placer 2 | La Paz | 2015-04236 | 4N | 20W | 23 | 20 | 1 | \$ 155 |
| 257 | 435568 | Eastside Placer 3 | La Paz | 2015-04235 | 4N | 20W | 23 | 10 | 1 | \$ 155 |
| 258 | 435569 | Laura Kay 1-1 | Yavapai | 2015-0055540 | 10N | 1E | 12 | 20 | 1 | \$ 155 |
| 259 | 435570 | Laura Kay 1-2 | Yavapai | 2015-0055541 | 10N | 1E | 12 | 20 | 1 | \$ 155 |
| 260 | 435571 | Laura Kay 1-3 | Yavapai | 2015-0055542 | 10N | 1E | 12 | 20 | 1 | \$ 155 |
| 261 | 437448 | Au Sum 2 | Yavapai | 2016-0019092 | 10N | 2E | 28,33 | 20 | 1 | \$ 155 |
| 262 | 437449 | Carrie 1-2 | Maricopa | 2016-0222160 | 7N | 3W | 31 | 20 | 1 | \$ 155 |
| 263 | 437450 | Carrie 2-2 | Maricopa | 2016-0222162 | 7N | 3W | 31 | 20 | 1 | \$ 155 |
| 264 | 437451 | Goodwin 1-1 | Yavapai | 2016-0019094 | 12N | 1W | 28, 33 | 20 | 1 | \$ 155 |
| 265 | 437452 | Goodwin 1-2 | Yavapai | 2016-0019093 | 12N | 1W | 33 | 20 | 1 | \$ 155 |
| 266 | 437453 | Pennyweight 1-2 | Maricopa | 2016-0222164 | 7N | 3W | 29 | 20 | 1 | \$ 155 |
| 267 | 437934 | Carrie 1-1 | Maricopa | 2016-0242927 | 7N | 3W | 31 | 20 | 1 | \$ 155 |

5,458.9 278 \$ 43,090

278 segments x \$155 = \$ 43,090

PHOENIX, ARIZONA

2016 AUG 10 P 1:18

RECEIVED
BLM AZ STATE OFFICE

United States Department of the Interior
Bureau of Land Management
 DIV OF LANDS, MINRLS & ENERGY
 ONE N CENTRAL AVE
 PHOENIX, AZ 85004 -4427
 Phone: 602-417-9200

Receipt

No: 3625476

| | |
|--|--|
| Transaction #: 3729230 | |
| Date of Transaction: 08/10/2016 | |
| CUSTOMER: | |
| ROADRUNNER PROSPECTORS CLUB INC PO BOX 56804 PHOENIX, AZ 85079-6804 US | |

| LINE # | QTY | DESCRIPTION | REMARKS | UNIT PRICE | TOTAL |
|---------------|------|--|---------------------|------------|--------------------|
| 1 | 1.00 | LOCATABLE MINERALS / MINING CLAIMS- NOT NEW-UNADJUD, ONE AUTH NO. ONLY / MINING CLAIM MONEY RECEIVED CASES: AMC11413/\$43090.00 | 2017 MAINT (267) | - n/a - | 43090.00 |
| TOTAL: | | | | | \$43,090.00 |

| PAYMENT INFORMATION | | | | | |
|---------------------|-----------|---|-------------|------------|--|
| 1 | AMOUNT: | 43090.00 | POSTMARKED: | N/A | |
| | TYPE: | CHECK | RECEIVED: | 08/10/2016 | |
| | CHECK NO: | 9073 | | | |
| | NAME: | ROADRUNNER PROSPECTORS CLUB INC PO BOX 56804 PHOENIX AZ 85079-6804 US | | | |

| |
|---------|
| REMARKS |
| |

This receipt was generated by the automated BLM Collections and Billing System and is a paper representation of a portion of the official electronic record contained therein.

| | | |
|--------|--------|--------|
| 364688 | 313473 | 11413 |
| 366267 | 314304 | 48976 |
| 368415 | 314626 | 62606 |
| 371350 | 321061 | 64830 |
| 371802 | 326311 | 68526 |
| 374274 | 326754 | 74734 |
| 374726 | 329013 | 76950 |
| 406356 | 329318 | 82212 |
| 407030 | 327930 | 89414 |
| 410363 | 328302 | 92803 |
| 427326 | 328593 | 95198 |
| 429664 | 328689 | 96051 |
| 430534 | 328742 | 102389 |
| 430611 | 329388 | 129334 |
| | 329800 | 130488 |
| | 331232 | 142355 |
| | 326772 | 157621 |
| | 333426 | 170911 |
| | 338207 | 174224 |
| | 339964 | 191670 |
| | 350275 | 235841 |
| | 350903 | 236096 |
| | 356380 | 244561 |
| | 356553 | 247112 |
| | 358378 | 254410 |
| | 358379 | 258455 |
| | 362558 | 291104 |
| | 364340 | 300332 |

329013 329318 82212 11413
 329388 313473 174224 129334 89414 48976
 329800 314304 191670 130488 92803 62606
 331232 314626 235841 142355 95198 64830
 321061 236096 157621 96051 68526
 102389 74734

MAINTENANCE FEE PAYMENT

Claimant Name: Roadrunner Prospectors' Club
 Address: PO Box 56804
 City: Phoenix State: AZ Zip: 85079
 Telephone: 602 274-2521
 E-mail address:
 Signature: [Signature]

326311 244561
 326754 247112
 251042
 254410
 258455
 291104

327930
 328302
 BLM
 Date Stamp
 328593
 328689
 328742
 PHOENIX, ARIZONA
 2015 AUG 12 P 1:21
 RECEIVED
 I M AZ STATE OFFICE

Check here if this is a change of address.

326772 300332 170911 126534 76950

| LINE NO. | AMC NUMBER | CLAIM/SITE NAME | COUNTY RECORDER DATA (If available) | TWP | RNG | SEC |
|----------|------------|---------------------|-------------------------------------|-----|-----|-----|
| 1 | | | | | | |
| 2 | | (See Attached List) | | | | |
| 3 | | | | | | |
| 4 | | | | | | |
| 5 | | | | | | |
| 6 | | | | | | |
| 7 | | | | | | |
| 8 | | | | | | |
| 9 | | | | | | |
| 10 | | | | | | |

243 CLAIMS

List additional claims on Form MCF114.

No. of Claims*: 259 x \$155 = 40,145.00
 Check No: 8458 ^{segments} Init. ERG
 Receipt No.: 3365318
 For BLM Use Only

Bureau of Land Management
 Arizona State Office
www.blm.gov/az/

* \$155 per lode mining claim, mill site, or tunnel site; and \$155 for each 20 acres or portion thereof for each placer mining claim.

Form: MCF112
 Revised July 2014

ENTERED
 AUG 18 2015
 RE

This form is available from the Arizona Geological Survey and may be reproduced.

RRPC Master Claims List as of August 4, 2015

\$40,145

\$155.00

| Seq. # | AMC # | Claim Name | Cnty Recorder Data Record/Book Page | Township | Range | Section | Total Acres | 20 Acre Segments | Maint. Fee |
|--------|--------|---------------------|--|-----------|-------|---------|----------------|---------------------|---------------|
| 1 | 11413 | Wednesday Hope #4 | 1015 726, 1799 33, 1569 374 | 9.5N/10N | 2E/2E | 20/32 | 20 | 1 | \$ 155 |
| 2 | 48976 | Aquarius #1 | 0801 192 *** | 10N | 2E | 7 | 20 | 1 | \$ 155 |
| 3 | 48977 | Aquarius #3 | 0801 194 *** | 10N | 2E | 7, 18 | 20 | 1 | \$ 155 |
| 4 | 62606 | Aquarius #2 | 1001 437 | 10N | 2E | 7 | 20 | 1 | \$ 155 |
| 5 | 64830 | Catclaw | 0912 239 | 9N | 4W | 6 | 20 | 1 | \$ 155 |
| 6 | 68531 | Thomason | 0121 511 | 9N | 4W | 7 | 20 | 1 | \$ 155 |
| 7 | 74736 | Sharon Lee #3 | 0912 399 | 10N | 1E | 2 | 20 | 1 | \$ 155 |
| 8 | 76951 | Merciful Heavens #2 | 1329 344 | 12N/11N | 1W/1W | 33/4 | 20 | 1 | \$ 155 |
| 9 | 82213 | Bean Bag #1 | 0965 338, 1252 276 | 12N | 1W | 28 | 20 | 1 | \$ 155 |
| 10 | 89420 | Wolf #1 | 0961 673, 90 203541 | 11.5N | 1E | 31 | 20 | 1 | \$ 155 |
| 11 | 89421 | Wolf #2 | 0961 674, 2207 41 | 11.5N | 1E | 31 | 20 | 1 | \$ 155 |
| 12 | 89422 | Wolf #3 | 0961 675, 2207 41 | 11.5N | 1E | 31 | 20 | 1 | \$ 155 |
| 13 | 89423 | Wolf #4 | 0961 676, 2207 41 | 11.5N/11N | 1E/1E | 31/6 | 20 | 1 | \$ 155 |
| 14 | 92803 | Goodwin #1 | 1058 779 | 12N | 1W | 28, 33 | 31.68 | 2 | \$ 310 |
| 15 | 95198 | Gold Palace I | 1256 447 | 12N | 1W | 19 | 20 | 1 | \$ 155 |
| 16 | 95199 | Gold Palace II | 1256 450 | 12N | 1W | 19 | 20 | 1 | \$ 155 |
| 17 | 95200 | Gold Palace III | 1256 453 | 12N | 1W | 19 | 20 | 1 | \$ 155 |
| 18 | 95201 | Gold Palace IV | 1256 456 | 12N | 1W | 19 | 20 | 1 | \$ 155 |
| 19 | 95202 | Gold Palace V | 1256 459 | 12N | 1W | 19 | 20 | 1 | \$ 155 |
| 20 | 95203 | Gold Palace VI | 1256 462 | 12N | 1W | 19 | 20 | 1 | \$ 155 |
| 21 | 95204 | Gold Palace VII | 1256 465 | 12N | 1W | 19 | 20 | 1 | \$ 155 |
| 22 | 95205 | Gold Palace VIII | 1256 468 | 12N | 1W | 30 | 20 | 1 | \$ 155 |
| 23 | 96051 | JDR #1 | 1267 825 | 12.5N | 2W | 21 | 20 | 1 | \$ 155 |
| 24 | 96052 | JDR #2 | 1267 827 | 12.5N | 2W | 21 | 20 | 1 | \$ 155 |
| 25 | 96053 | JDR #3 | 1267 829 | 12.5N/13N | 2W/2W | 21/33 | 20 | 1 | \$ 155 |
| 26 | 102389 | Mandala 2 & 3 | 1293 289 | 10N | 2E | 30 | 20 | 1 | \$ 155 |
| 27 | 126535 | Mandala 7 | 1371 337 | 10N | 2E | 30 | 20 | 1 | \$ 155 |
| 28 | 126536 | Mandala 8 | 1371 339 | 10N | 2E | 30 | 20 | 1 | \$ 155 |
| 29 | 126537 | Mandala 9 | 1371 341 | 10N | 2E | 30 | 20 | 1 | \$ 155 |
| 30 | 126538 | Mandala 10 | 1371 343 | 10N | 2E | 31 | 20 | 1 | \$ 155 |
| 31 | 129334 | Mandala 12 | 1376 706 | 10N | 2E | 30 | 20 | 1 | \$ 155 |
| 32 | 130489 | Protecto 2 | 1381 826 | 12N | 1W | 33 | 20 | 1 | \$ 155 |
| 33 | 142356 | Donkey Mine #4 | 1422 292 | 12N | 1W | 33 | 20 | 1 | \$ 155 |
| 34 | 157621 | Mandala 14 | 1437 981 | 10N | 2E | 30 | 20 | 1 | \$ 155 |
| 35 | 170911 | Wednesday Hope #1 | 1467 691 | 10N | 2E | 31 | 20 | 1 | \$ 155 |
| 36 | 174224 | Big Rock #1 | 1469 76 | 12N | 1W | 10, 11 | 20 | 1 | \$ 155 |
| 37 | 174225 | Big Rock #2 | 1469 78 | 12N | 1W | 10 | 20 | 1 | \$ 155 |
| 38 | 191670 | Roadrunner #1 | 1514 754 | 12.5N | 1W | 25 | 12.85 | 1 | \$ 155 |
| 39 | 191671 | Roadrunner #2 | 1514 756 | 12.5N | 1W | 25 | 20 | 1 | \$ 155 |
| 40 | 196365 | Turkey Buzzard #1 | 1529 712 | 11N | 3E | 30 | 13.77 | 1 | \$ 155 |
| 41 | 235841 | Betty #4 | 1713 778 | 12N | 1W | 14 | 20 | 1 | \$ 155 |
| 42 | 235842 | Betty #5 | 1713 780 | 12N | 1W | 14 | 20 | 1 | \$ 155 |
| 43 | 236096 | Gary's Place #1A | 1714 193 | 12N | 1W | 14 | 20 | 1 | \$ 155 |
| 44 | 244561 | Gold Dust #2 | 1781 510 | 11N | 3E | 30 | 6.88 | 1 | \$ 155 |
| 45 | 247112 | Sando | 85 0559653 | 7N | 3W | 28 | 20 | 1 | \$ 155 |
| 46 | 251044 | Faith #3 | 1812 836 | 9N | 5W | 13 | 20 | 1 | \$ 155 |
| 47 | 251047 | Lords Blessing | 1803 415 | 9N | 5W | 13 | 20 | 1 | \$ 155 |
| 48 | 254410 | Jackass | 4069 605 | 11N | 1E | 34, 35 | 19.97 | 1 | \$ 155 |
| 49 | 254411 | Jenney | 4069 602 | 11N | 1E | 34 | 20 | 1 | \$ 155 |
| 50 | 254412 | Hinny | 4069 601, 1341 96, 1807 656 | 11N | 1E | 34 | 16.22 | 1 | \$ 155 |
| 51 | 258455 | Turkey Buzzard Ext. | 1838 870 | 11N | 3E | 30 | 10 | 1 | \$ 155 |
| 52 | 258456 | Turkey Buzzard #2 | 1838 872 | 11N | 3E | 30 | 20 | 1 | \$ 155 |
| 53 | 258457 | Turkey Buzzard #3 | 1838 874 | 11N | 3E | 30 | 20 | 1 | \$ 155 |
| 54 | 258458 | Turkey Buzzard #4 | 1838 876 | 11N | 3E | 30 | 20 | 1 | \$ 155 |
| 55 | 291104 | Cas #2 | 92 0366284, 88 598383 | 7N | 3W | 29 | 20 | 1 | \$ 155 |
| 56 | 300332 | Wolf #5 | 2208 526 | 11.5N | 1E | 31 | 20 | 1 | \$ 155 |
| 57 | 300333 | Wolf #6 | 2208 524 | 11N | 1E | 5, 6 | 20 | 1 | \$ 155 |
| 58 | 313473 | Patriot 1 | 2347 704 | 11N | 1W | 4 | 20 | 1 | \$ 155 |
| 59 | 313474 | Patriot 2 | 2347 706 | 11N | 1W | 3, 4 | 20 | 1 | \$ 155 |
| 60 | 313475 | Patriot 3 | 2347 708 | 11N | 1W | 3 | 20 | 1 | \$ 155 |
| 61 | 313476 | Patriot 4 | 2347 710 | 11N | 1W | 3 | 20 | 1 | \$ 155 |
| 62 | 313477 | Patriot 5 | 2347 712 | 11N | 1W | 3 | 20 | 1 | \$ 155 |
| 63 | 314304 | Oro De Valenzuela | 3436 378 | 11N | 1E | 14 | 20 | 1 | \$ 155 |

RECEIVED
 STATE OFFICE
 105 AUG 12 PM 1:27
 PHOENIX, ARIZONA

RRPC Master Claims List as of August 4, 2015

\$40,145

\$155.00

| Seq. # | AMC # | Claim Name | Cnty Recorder Data Record/Book Page | Township | Range | Section | Total Acres | 20 Acre Segments | Maint. Fee |
|--------|--------|----------------|--|----------|-------|---------|----------------|---------------------|---------------|
| 64 | 314631 | RR-Humbug #3 | 2360 845 | 8N | 1E | 29, 30 | 20 | 1 | \$ 155 |
| 65 | 321061 | Lefty #2 | 2479 560 | 8N | 1E | 30 | 20 | 1 | \$ 155 |
| 66 | 326311 | Carrie #1 | 93 0174157 | 7N | 3W | 31 | 40 | 2 | \$ 310 |
| 67 | 326312 | Carrie #2 | 93 0174158 | 7N | 3W | 31 | 40 | 2 | \$ 310 |
| 68 | 326313 | Carrie #3 | 93 0174160 | 7N | 3W | 30 | 20 | 1 | \$ 155 |
| 69 | 326314 | Carrie #4 | 93 0174159 | 7N | 3W | 30 | 20 | 1 | \$ 155 |
| 70 | 326315 | Pennyweight #1 | 93 0174148 | 7N | 3W | 29 | 40 | 2 | \$ 310 |
| 71 | 326316 | Pennyweight #2 | 93 0174156 | 7N | 3W | 29 | 20 | 1 | \$ 155 |
| 72 | 326319 | Pat | 93 0174152 | 7N | 3W | 31 | 20 | 1 | \$ 155 |
| 73 | 326322 | Double R | 12 0735517 | 6N | 4W | 12 | 80 | 4 | \$ 620 |
| 74 | 326325 | Jake #3 | 93 0174145 | 7N | 3W | 29 | 20 | 1 | \$ 155 |
| 75 | 326327 | Pilgrim #1 | 93 0174153 | 7N | 3W | 31 | 20 | 1 | \$ 155 |
| 76 | 326754 | Keystone #1 | 1922 836 | 5S | 15E | 4 | 20 | 1 | \$ 155 |
| 77 | 326757 | Keystone #4 | 1922 842 | 5S | 15E | 4 | 20 | 1 | \$ 155 |
| 78 | 326758 | Keystone #5 | 1922 844 | 5S | 15E | 4 | 20 | 1 | \$ 155 |
| 79 | 326760 | Keystone #7 | 1922 848 | 5S | 15E | 4 | 20 | 1 | \$ 155 |
| 80 | 326761 | Keystone #8 | 1922 850 | 5S | 15E | 4 | 20 | 1 | \$ 155 |
| 81 | 326762 | Keystone #9 | 1922 852 | 5S | 15E | 4 | 20 | 1 | \$ 155 |
| 82 | 326764 | Keystone #11 | 1922 856 | 5S | 15E | 4 | 20 | 1 | \$ 155 |
| 83 | 326765 | Keystone #12 | 1922 858 | 5S | 15E | 4 | 20 | 1 | \$ 155 |
| 84 | 326772 | Range Bull # 1 | 93 0362063 | 7N | 3W | 21 | 20 | 1 | \$ 155 |
| 85 | 327930 | Red Bird # 7 | 93 0897433 | 7N | 3W | 17 | 20 | 1 | \$ 155 |
| 86 | 327931 | Red Bird # 8 | 93 0897432 | 7N | 3W | 20 | 20 | 1 | \$ 155 |
| 87 | 328302 | Red Bird # 9 | 93 0897431 | 7N | 3W | 17 | 20 | 1 | \$ 155 |
| 88 | 328593 | Ceedee #2 | 2742 961 | 8N | 1W | 5 | 20 | 1 | \$ 155 |
| 89 | 328594 | Ceedee #3 | 2742 963 | 8N | 1W | 5 | 20 | 1 | \$ 155 |
| 90 | 328595 | Ceedee #4 | 2742 965 | 8N | 1W | 5 | 20 | 1 | \$ 155 |
| 91 | 328597 | Ceedee #7 | 2742 969 | 8N | 1W | 4 | 20 | 1 | \$ 155 |
| 92 | 328598 | Ceedee #8 | 2742 971 | 8N | 1W | 4 | 20 | 1 | \$ 155 |
| 93 | 328605 | Burro #1 | 2742 987 | 12N | 1W | 33 | 20 | 1 | \$ 155 |
| 94 | 328606 | Burro #2 | 2742 985 | 11N | 1W | 4 | 20 | 1 | \$ 155 |
| 95 | 328698 | Cass No. 4 | 93 0885578 | 7N | 3W | 29 | 20 | 1 | \$ 155 |
| 96 | 328699 | Cass No. 5 | 93 0885577 | 7N | 3W | 29 | 20 | 1 | \$ 155 |
| 97 | 328700 | Cass No. 6 | 93 0885576 | 7N | 3W | 29 | 20 | 1 | \$ 155 |
| 98 | 328701 | Cass No. 7 | 93 0885575 | 7N | 3W | 29 | 20 | 1 | \$ 155 |
| 99 | 328702 | Cass No. 8 | 93 0885574 | 7N | 3W | 29 | 20 | 1 | \$ 155 |
| 100 | 328703 | Ceedee #1 | 2746 703 | 8N | 1W | 5 | 20 | 1 | \$ 155 |
| 101 | 328704 | Ceedee #5 | 2746 705 | 8N | 1W | 5 | 20 | 1 | \$ 155 |
| 102 | 328705 | Genes Dream | 2746 707 | 9.5N | 2E | 20, 21 | 20 | 1 | \$ 155 |
| 103 | 328742 | Red Bird #11 | 2754 072 | 10N | 1E | 1 | 40 | 2 | \$ 310 |
| 104 | 329020 | RR #1 | 94 0021782 | 6N | 4W | 1 | 20 | 1 | \$ 155 |
| 105 | 329021 | RR #2 | 94 0021783 | 6N | 4W | 1 | 20 | 1 | \$ 155 |
| 106 | 329022 | RR #3 | 94 0021784 | 6N | 4W | 1 | 20 | 1 | \$ 155 |
| 107 | 329023 | RR #4 | 94 0021785 | 6N | 4W | 1 | 20 | 1 | \$ 155 |
| 108 | 329318 | Mercer's Place | 2777 216, 3288 700 | 11N | 1W | 4 | 20 | 1 | \$ 155 |
| 109 | 329388 | Bad Luck | 2780 912 | 12N | 1W | 14, 23 | 20 | 1 | \$ 155 |
| 110 | 329389 | No Luck | 2780 914 | 12N | 1W | 23 | 20 | 1 | \$ 155 |
| 111 | 329390 | Good Luck | 2780 916 | 12N | 1W | 23, 24 | 20 | 1 | \$ 155 |
| 112 | 329391 | Great Luck | 2780 918 | 12N | 1W | 24 | 20 | 1 | \$ 155 |
| 113 | 329392 | Clinton | 2780 920 | 12N/12N | 1W/2W | 30/25 | 20 | 1 | \$ 155 |
| 114 | 329393 | Clyde | 2780 922 | 12N/12N | 1W/2W | 30/25 | 20 | 1 | \$ 155 |
| 115 | 329394 | Bonny | 2780 924 | 12N | 1W | 30 | 20 | 1 | \$ 155 |
| 116 | 329800 | Gypsy Moth 1 | 94 0218517 | 7N | 3W | 21 | 20 | 1 | \$ 155 |
| 117 | 329801 | Gypsy Moth 2 | 94 0218518 | 7N | 3W | 21 | 20 | 1 | \$ 155 |
| 118 | 331233 | Red Basin #1 | 14 0184527 | 6N | 6W | 26 | 145 | 8 | \$ 1,240 |
| 119 | 333426 | La Siesta #1 | 95 0185054 | 7N | 3W | 30 | 20 | 1 | \$ 155 |
| 120 | 333427 | La Siesta #3 | 95 0185055 | 7N | 3W | 30 | 20 | 1 | \$ 155 |
| 121 | 338207 | Seven Grand | 98 0139764 | 7N | 4W | 25 | 20 | 1 | \$ 155 |
| 122 | 339964 | RR #5 | 96 0488373 | 6N | 4W | 1 | 20 | 1 | \$ 155 |
| 123 | 339965 | RR #6 | 96 0488374 | 6N | 4W | 1 | 20 | 1 | \$ 155 |
| 124 | 350275 | Gold Bug | 98 0535738 | 6N | 6W | 26 | 20 | 1 | \$ 155 |
| 125 | 350276 | Gold Master | 98 0535739 | 6N | 6W | 26 | 20 | 1 | \$ 155 |
| 126 | 350277 | Lobo | 98 0535740 | 6N | 6W | 26 | 20 | 1 | \$ 155 |

RRPC - Water Claims List as of August 4, 2015

\$40,145
\$155.00

| Seq. # | AMC # | Claim Name | Cnty Recorder Data Record/Book Page | Township | Range | Section | Total Acres | 20 Acre Segments | Maint. Fee |
|--------|--------|-----------------------|--|----------|-------|-------------|----------------|---------------------|---------------|
| 127 | 350278 | Mine Lab | 98 0535741 | 6N | 6W | 26 | 20 | 1 | \$ 155 |
| 128 | 350279 | Webster Mine | 98 0535742 | 6N | 6W | 26 | 20 | 1 | \$ 155 |
| 129 | 350280 | Whistler | 98 0535743 | 6N | 6W | 26 | 20 | 1 | \$ 155 |
| 130 | 350281 | Wickenburg | 98 0535744 | 6N | 6W | 26 | 20 | 1 | \$ 155 |
| 131 | 350905 | King Duck II | 4247 552 | 10N/9N | 4W/4W | 31/6 | 20 | 1 | \$ 155 |
| 132 | 350906 | Little Terry | 4247 551 | 9N | 4W | 6 | 20 | 1 | \$ 155 |
| 133 | 350907 | Devils Nest AU 9 | 3620 60 | 9N | 4W | 6 | 20 | 1 | \$ 155 |
| 134 | 350910 | Devils Nest AU 12 | 3620 62 | 9N | 4W | 6 | 20 | 1 | \$ 155 |
| 135 | 356382 | Ducbill #1 | 27429 1402 63 | 12N | 1W | 17 | 20 | 1 | \$ 155 |
| 136 | 356383 | Ducbill #2 | 27430 1402 65 | 12N | 1W | 17 | 20 | 1 | \$ 155 |
| 137 | 356553 | Au Sum 1 | 4511 771 | 10N | 2E | 28,29,32,33 | 40 | 2 | \$ 310 |
| 138 | 358378 | Hidden Treasure | 3633816 4076 796 | 12N/12N | 1W/2W | 30,31/25,36 | 20 | 1 | \$ 155 |
| 139 | 358379 | Aquarius Ext. West #1 | 3633817 4076 797 | 10N | 2E | 18 | 20 | 1 | \$ 155 |
| 140 | 358380 | Aquarius Ext. West #2 | 3633818 4076 798 | 10N | 2E | 18 | 20 | 1 | \$ 155 |
| 141 | 358381 | Aquarius Ext. West #3 | 3633819 4076 799 | 10N | 2E | 18 | 20 | 1 | \$ 155 |
| 142 | 358382 | Aquarius Ext. West #4 | 3633820 4076 800 | 10N | 2E | 18 | 20 | 1 | \$ 155 |
| 143 | 362558 | Holly Marie | 3769442 4190 312 | 9.5N | 2E | 20, 21 | 2.26 | 1 | \$ 155 |
| 144 | 364340 | Mary Francis | 3824744 4236 718 | 13N | 1E | 29 | 16 | 1 | \$ 155 |
| 145 | 364688 | RR #7 | 05 0477984 | 6N | 4W | 1 | 20 | 1 | \$ 155 |
| 146 | 364689 | RR #8 | 05 0477985 | 6N | 4W | 1 | 20 | 1 | \$ 155 |
| 147 | 366267 | Cobi's Gold | 4281 505 | 11.5N | 1E | 19 | 20 | 1 | \$ 155 |
| 148 | 366268 | Renee's Best Chance | 4281 507 | 13N | 3W | 32 | 20 | 1 | \$ 155 |
| 149 | 366269 | Rough Road | 4281 503 | 11.5N | 1E | 30 | 20 | 1 | \$ 155 |
| 150 | 366270 | Stuck Duck | 4281 506 | 13N | 3W | 32 | 20 | 1 | \$ 155 |
| 151 | 366271 | Tegan's Bank | 4281 504 | 11.5N | 1E | 30 | 20 | 1 | \$ 155 |
| 152 | 368415 | Jacks Hideaway | 4308 863 | 13N | 3W | 29 | 20 | 1 | \$ 155 |
| 153 | 371350 | Wilgers Wish | 4372 442 | 13N | 3W | 32 | 20 | 1 | \$ 155 |
| 154 | 371802 | Happy Times | 4390 621 | 13N | 3W | 29, 32 | 20 | 1 | \$ 155 |
| 155 | 371803 | Saddle Tramps | 4390 622 | 13N | 3W | 29 | 20 | 1 | \$ 155 |
| 156 | 374274 | Lori's Place | 06 1491113 | 7N | 3W | 20 | 20 | 1 | \$ 155 |
| 157 | 374275 | Charles' Dream | 06 1491112 | 7N | 3W | 20 | 20 | 1 | \$ 155 |
| 158 | 374726 | Roslyn's Roost | 06 1445012 | 7N | 3W | 17 | 20 | 1 | \$ 155 |
| 159 | 406356 | Cass No. 9 | 11 0623988 | 7N | 3W | 29 | 20 | 1 | \$ 155 |
| 160 | 407030 | Carols Corner | 11 0623989 | 7N | 3W | 18 | 20 | 1 | \$ 155 |
| 161 | 410363 | Cass # 10 | 11 0735632 | 7N | 3W | 29 | 20 | 1 | \$ 155 |
| 162 | 410364 | Golden Sands | 11 073563 | 7N | 3W | 18 | 20 | 1 | \$ 155 |
| 163 | 427326 | Rexs' Place | 4914 661 | 11.5N | 1E | 30 | 20 | 1 | \$ 155 |
| 164 | 429667 | Bean Bag 2-1 | 2014-0040487 | 10N | 2E | 30 | 20 | 1 | \$ 155 |
| 165 | 429668 | Bean Bag 2-2 | 2014-0040488 | 10N | 2E | 30 | 20 | 1 | \$ 155 |
| 166 | 429669 | Bumble Bee King 1 | 2014-0040521 | 9N | 2E | 5 | 20 | 1 | \$ 155 |
| 167 | 429670 | Bumble Bee King 2 | 2014-0040522 | 9N | 2E | 5 | 20 | 1 | \$ 155 |
| 168 | 429671 | Bumble Bee King 3 | 2014-0040523 | 9N | 2E | 5 | 20 | 1 | \$ 155 |
| 169 | 429672 | Bumble Bee King 4 | 2014-0040524 | 9N | 2E | 5 | 20 | 1 | \$ 155 |
| 170 | 429673 | Bumble Bee King 5 | 2014-0040525 | 9N | 2E | 5 | 20 | 1 | \$ 155 |
| 171 | 429674 | Bumble Bee King 6 | 2014-0040526 | 9N | 2E | 5 | 20 | 1 | \$ 155 |
| 172 | 429675 | C-6 Placer 1 | 2014-02950 | 4N | 20W | 23 | 20 | 1 | \$ 155 |
| 173 | 429676 | C-6 Placer 2 | 2014-02951 | 4N | 20W | 23 | 20 | 1 | \$ 155 |
| 174 | 429677 | C-6 Placer 3 | 2014-02952 | 4N | 20W | 23 | 20 | 1 | \$ 155 |
| 175 | 429678 | CD7 Placer 1 | 2014-02953 | 4N | 20W | 14, 15, 23 | 20 | 1 | \$ 155 |
| 176 | 429679 | CD7 Placer 2 | 2014-02954 | 4N | 20W | 14, 15, 23 | 20 | 1 | \$ 155 |
| 177 | 429680 | CD7 Placer 3 | 2014-02955 | 4N | 20W | 14, 15, 23 | 20 | 1 | \$ 155 |
| 178 | 429681 | CD7 Placer 4 | 2014-02956 | 4N | 20W | 14, 15, 23 | 20 | 1 | \$ 155 |
| 179 | 429682 | CD7 Placer 5 | 2014-02957 | 4N | 20W | 14, 15, 23 | 20 | 1 | \$ 155 |
| 180 | 429683 | CD7 Placer 6 | 2014-02958 | 4N | 20W | 14, 15, 23 | 20 | 1 | \$ 155 |
| 181 | 429688 | Diablo Placer 5 | 2014-02963 | 4N | 20W | 23,24,25,26 | 20 | 1 | \$ 155 |
| 182 | 429689 | Diablo Placer 6 | 2014-02964 | 4N | 20W | 23,24,25,26 | 20 | 1 | \$ 155 |
| 183 | 429690 | Diablo Placer 7 | 2014-02965 | 4N | 20W | 23,24,25,26 | 20 | 1 | \$ 155 |
| 184 | 429691 | D6 Placer 1 | 2014-02946 | 4N | 20W | 26 | 20 | 1 | \$ 155 |
| 185 | 429692 | D6 Placer 2 | 2014-02947 | 4N | 20W | 26 | 20 | 1 | \$ 155 |
| 186 | 429693 | Eastside Placer 1 | 2014-02948 | 4N | 20W | 23 | 20 | 1 | \$ 155 |
| 187 | 429694 | Eastside Placer 2 | 2014-02949 | 4N | 20W | 23 | 20 | 1 | \$ 155 |
| 188 | 429695 | Jake 1-1 | 2014-0584266 | 7N | 3W | 29 | 20 | 1 | \$ 155 |
| 189 | 429696 | Jake 1-2 | 2014-0584267 | 7N | 3W | 29 | 20 | 1 | \$ 155 |

RECEIVED
 TAZ STATE OFFICE
 2015 AUG 12 P 1:27
 HENRIK ARIZONA

puer

RRPC Master Claims List as of August 4, 2015

\$40,141

\$155.00

| Seq. # | AMC # | Claim Name | Cnty Recorder Data Record/Book Page | Township | Range | Section | Total Acres | 20 Acre Segments | Maint. Fee |
|--------|--------|------------------|--|----------|-------|---------|----------------|---------------------|---------------|
| 190 | 429697 | Jake 1-3 | 2014-0584268 | 7N | 3W | 29 | 20 | 1 | \$ 155 |
| 191 | 429698 | Jake 1-4 | 2014-0584269 | 7N | 3W | 29 | 20 | 1 | \$ 155 |
| 192 | 429699 | Jake 2-1 | 2014-0584270 | 7N | 3W | 29 | 20 | 1 | \$ 155 |
| 193 | 429700 | Jake 2-2 | 2014-0584271 | 7N | 3W | 29 | 20 | 1 | \$ 155 |
| 194 | 429701 | Jake 2-3 | 2014-0584272 | 7N | 3W | 29 | 20 | 1 | \$ 155 |
| 195 | 429702 | Jake 2-4 | 2014-0584273 | 7N | 3W | 29 | 20 | 1 | \$ 155 |
| 196 | 429703 | Janet Lynn 2-1 | 2014-0040485 | 10N | 1E | 12, 13 | 20 | 1 | \$ 155 |
| 197 | 429705 | Laura Kay 1-1 | 2014-0040482 | 10N | 1E | 12, 13 | 20 | 1 | \$ 155 |
| 198 | 429706 | Laura Kay 1-2 | 2014-0040483 | 10N | 1E | 12, 13 | 20 | 1 | \$ 155 |
| 199 | 429707 | Laura Kay 1-3 | 2014-0040484 | 10N | 1E | 12, 13 | 20 | 1 | \$ 155 |
| 200 | 429708 | Leave No Holes 1 | 2014-0040513 | 9N | 5W | 12 | 20 | 1 | \$ 155 |
| 201 | 429709 | Leave No Holes 2 | 2014-0040514 | 9N | 5W | 12 | 20 | 1 | \$ 155 |
| 202 | 429710 | Leave No Holes 3 | 2014-0040515 | 9N | 5W | 12 | 20 | 1 | \$ 155 |
| 203 | 429711 | Leave No Holes 4 | 2014-0040516 | 9N | 5W | 12 | 20 | 1 | \$ 155 |
| 204 | 429712 | Leave No Holes 5 | 2014-0040517 | 9N | 5W | 12 | 20 | 1 | \$ 155 |
| 205 | 429713 | Leave No Holes 6 | 2014-0040518 | 9N | 5W | 12 | 20 | 1 | \$ 155 |
| 206 | 429714 | Leave No Holes 7 | 2014-0040519 | 9N | 5W | 12 | 20 | 1 | \$ 155 |
| 207 | 429715 | Leave No Holes 8 | 2014-0040520 | 9N | 5W | 12 | 20 | 1 | \$ 155 |
| 208 | 429716 | Ocotillo 1-1 | 2014-0584274 | 7N | 3W | 17, 20 | 20 | 1 | \$ 155 |
| 209 | 429717 | Ocotillo 1-2 | 2014-0584275 | 7N | 3W | 17, 20 | 20 | 1 | \$ 155 |
| 210 | 429718 | Ocotillo 1-3 | 2014-0584276 | 7N | 3W | 17, 20 | 20 | 1 | \$ 155 |
| 211 | 429719 | Ocotillo 1-4 | 2014-0584277 | 7N | 3W | 17, 20 | 20 | 1 | \$ 155 |
| 212 | 429720 | Ocotillo 2-1 | 2014-0584278 | 7N | 3W | 17, 18 | 20 | 1 | \$ 155 |
| 213 | 429721 | Ocotillo 2-2 | 2014-0584279 | 7N | 3W | 17, 18 | 20 | 1 | \$ 155 |
| 214 | 429722 | Ocotillo 2-3 | 2014-0584280 | 7N | 3W | 17, 18 | 20 | 1 | \$ 155 |
| 215 | 429723 | Ocotillo 2-4 | 2014-0584281 | 7N | 3W | 17, 18 | 20 | 1 | \$ 155 |
| 216 | 429724 | Randy B 1 | 2014-0584262 | 7N | 3W | 30 | 20 | 1 | \$ 155 |
| 217 | 429725 | Randy B 2 | 2014-0584263 | 7N | 3W | 30 | 20 | 1 | \$ 155 |
| 218 | 429726 | Randy B 3 | 2014-0584264 | 7N | 3W | 30 | 20 | 1 | \$ 155 |
| 219 | 429727 | Randy B 4 | 2014-0584265 | 7N | 3W | 30 | 20 | 1 | \$ 155 |
| 220 | 429728 | RR-Humbug 1-1 | 2014-0040505 | 8N | 1E | 31 | 20 | 1 | \$ 155 |
| 221 | 429729 | RR-Humbug 1-2 | 2014-0040506 | 8N | 1E | 31 | 20 | 1 | \$ 155 |
| 222 | 429730 | RR-Humbug 1-3 | 2014-0040507 | 8N | 1E | 31 | 20 | 1 | \$ 155 |
| 223 | 429731 | RR-Humbug 1-4 | 2014-0040508 | 8N | 1E | 31 | 20 | 1 | \$ 155 |
| 224 | 429732 | RR-Humbug 1-5 | 2014-0040509 | 8N | 1E | 31 | 20 | 1 | \$ 155 |
| 225 | 429733 | RR-Humbug 1-6 | 2014-0040510 | 8N | 1E | 31 | 20 | 1 | \$ 155 |
| 226 | 429734 | RR-Humbug 2-1 | 2014-0040511 | 8N | 1E | 31 | 20 | 1 | \$ 155 |
| 227 | 429735 | RR-Humbug 2-2 | 2014-0040512 | 8N | 1E | 31 | 20 | 1 | \$ 155 |
| 228 | 429736 | Sharon Lee 1-1 | 2014-0040492 | 11N | 1E | 35, 36 | 20 | 1 | \$ 155 |
| 229 | 429737 | Sharon Lee 1-2 | 2014-0040493 | 11N | 1E | 35, 36 | 20 | 1 | \$ 155 |
| 230 | 429738 | Sharon Lee 1-3 | 2014-0040494 | 11N | 1E | 35, 36 | 20 | 1 | \$ 155 |
| 231 | 429739 | Sharon Lee 1-4 | 2014-0040495 | 11N | 1E | 35, 36 | 20 | 1 | \$ 155 |
| 232 | 429740 | Sharon Lee 2-1 | 2014-0040496 | 11N | 1E | 35 | 20 | 1 | \$ 155 |
| 233 | 429741 | Sharon Lee 2-2 | 2014-0040497 | 11N | 1E | 35 | 20 | 1 | \$ 155 |
| 234 | 429742 | Sharon Lee 2-3 | 2014-0040498 | 11N | 1E | 35 | 20 | 1 | \$ 155 |
| 235 | 429743 | Sharon Lee 4-1 | 2014-0040499 | 10N | 1E | 1, 2 | 20 | 1 | \$ 155 |
| 236 | 429744 | Sharon Lee 4-2 | 2014-0040500 | 10N | 1E | 1, 2 | 20 | 1 | \$ 155 |
| 237 | 429745 | Sharon Lee 4-3 | 2014-0040501 | 10N | 1E | 1, 2 | 20 | 1 | \$ 155 |
| 238 | 429746 | Sharon Lee 4-4 | 2014-0040502 | 10N | 1E | 1, 2 | 20 | 1 | \$ 155 |
| 239 | 429747 | Sharon Lee 4-5 | 2014-0040503 | 10N | 1E | 1, 2 | 20 | 1 | \$ 155 |
| 240 | 429748 | Sharon Lee 4-6 | 2014-0040504 | 10N | 1E | 1, 2 | 20 | 1 | \$ 155 |
| 241 | 430534 | Lucky Eight | 2015-0077601 | 7N | 5W | 3 | 20 | 1 | \$ 155 |
| 242 | 430535 | Lucky Nine | 2015-0077602 | 7N | 5W | 3 | 20 | 1 | \$ 155 |
| 243 | 430611 | Vira Anne 2 | 2014-0008298 | 12.5N | 4W | 27 | 16.50 | 1 | \$ 155 |

5,091.1

259

\$40,145

2015 AUG 12 P 1:27

RECEIVED
M AZ STATE OFFICE

United States Department of the Interior
Bureau of Land Management
 LANDS/RECREATION & PLANNING
 ONE N CENTRAL AVE
 PHOENIX, AZ 85004 -2203
 Phone: 602-417-9200

Receipt

No: 3365318

| | |
|--|--|
| Transaction #: 3463377 | |
| Date of Transaction: 08/12/2015 | |
| CUSTOMER: | |
| ROADRUNNER PROSPECTORS CLUB INC PO BOX 56804 PHOENIX, AZ 85079-6804 US | |

| LINE # | QTY | DESCRIPTION | REMARKS | UNIT PRICE | TOTAL |
|---------------|------|---|------------------|------------|--------------------|
| 1 | 1.00 | LOCATABLE MINERALS / MINING CLAIMS- NOT NEW-UNADJUD, ONE AUTH NO. ONLY / MINING CLAIM MONEY RECEIVED CASES: AMC11413/\$40145.00 | 2016 MAINT (243) | - n/a - | 40145.00 |
| TOTAL: | | | | | \$40,145.00 |

| PAYMENT INFORMATION | | | |
|---------------------|-----------|---|----------------------|
| 1 | AMOUNT: | 40145.00 | POSTMARKED: N/A |
| | TYPE: | CHECK | RECEIVED: 08/12/2015 |
| | CHECK NO: | 8458 | |
| | NAME: | ROADRUNNER PROSPECTORS CLUB INC PO BOX 56804 PHOENIX AZ 85079-6804 US | |

| |
|---------|
| REMARKS |
| |

This receipt was generated by the automated BLM Collections and Billing System and is a paper representation of a portion of the official electronic record contained therein.

368415 358378 338207 329013 291104 244561 174224 191670 126534
 371350 358379 339964 329318 300332 247112 174224 191670 129334
 371802 362558 350275 329388 313473 251042 196365 130488
 374274 364340 350903 329800 314304 254410 235841 142355
 374726 364688 356380 331232 314626 258455 236096
 400356 366267 356553 333426 328689

157621 102389
 170911 11413
 174224 126534
 191670 129334
 196365 130488
 235841 142355

MAINTENANCE FEE PAYMENT

Claimant Name: ROAD RUNNER PROSPECTORS CLUB
 Address: 2744 W. OSBORN RD.
 City: PHOENIX State: AZ Zip: 85017
 Telephone: 602-274-2621
 E-mail address: _____
 Signature: Robert [unclear] agent

321061
 326311
 BLM Date Stamp 326754
 326772
 327930
 328302
 328593 328742
 PHOENIX, ARIZONA
 2014 AUG 27 A 10:53
 RECEIVED
 ILM AZ STATE OFFICE

407030
 410363
 427326
 489760
 626060
 648300
 685260

Check here if this is a change of address.

| LINE NO. | AMC NUMBER | CLAIM/SITE NAME | COUNTY RECORDER DATA (If available) | TWP | RNG | SEC |
|----------|------------|---------------------|-------------------------------------|-----|-----|-----|
| 1 | | <i>See attached</i> | | | | |
| 2 | | <i>Link</i> | | | | |
| 3 | | | | | | |
| 4 | | | | | | |
| 5 | | | | | | |
| 6 | | | | | | |
| 7 | | | | | | |
| 8 | | | | | | |
| 9 | | | | | | |
| 10 | | | | | | |

74734
 76950
 82212
 89414
 92803
 95198
 96051

List additional claims on Form MCF114.

No. of Claims*: 163 x \$155 = 27,745
 Check No.: 3113847 Int. ALL
 Receipt No.: 8270
 For BLM Use Only

Bureau of Land Management
 Arizona State Office
www.blm.gov/az/

* \$155 per lode mining claim, mill site, or tunnel site; and \$155 for each 20 acres or portion thereof for each placer mining claim.

Form: MCF112
 Revised July 2014

This form is available from the Arizona Geological Survey and may be reproduced.

SEP 25 2014
 BY: AT

| Seq. # | AMC # | Claim Name | County | Township | Range | Section | Total Acres | 20 Acre Segments | Fed. Maint. Fee |
|--------|--------|---------------------|----------|-----------|-------|---------|-------------|------------------|-----------------|
| 1 | 11413 | Wednesday Hope #4 | Yavapai | 9.5N/10N | 2E/2E | 20/32 | 20 | 1 | \$ 155 |
| 2 | 48976 | Aquarius #1 | Yavapai | 10N | 2E | 7 | 20 | 1 | \$ 155 |
| 3 | 48977 | Aquarius #3 | Yavapai | 10N | 2E | 7, 18 | 20 | 1 | \$ 155 |
| 4 | 62606 | Aquarius #2 | Yavapai | 10N | 2E | 7 | 20 | 1 | \$ 155 |
| 5 | 64830 | Catclaw | Yavapai | 9N | 4W | 6 | 20 | 1 | \$ 155 |
| 6 | 68531 | Thomason | Yavapai | 9N | 4W | 7 | 20 | 1 | \$ 155 |
| 7 | 74736 | Sharon Lee #3 | Yavapai | 10N | 1E | 2 | 20 | 1 | \$ 155 |
| 8 | 76951 | Merciful Heavens #2 | Yavapai | 12N/11N | 1W/1W | 33/4 | 20 | 1 | \$ 155 |
| 9 | 82213 | Bean Bag #1 | Yavapai | 12N | 1W | 28 | 20 | 1 | \$ 155 |
| 10 | 89420 | Wolf #1 | Yavapai | 11.5N | 1E | 31 | 20 | 1 | \$ 155 |
| 11 | 89421 | Wolf #2 | Yavapai | 11.5N | 1E | 31 | 20 | 1 | \$ 155 |
| 12 | 89422 | Wolf #3 | Yavapai | 11.5N | 1E | 31 | 20 | 1 | \$ 155 |
| 13 | 89423 | Wolf #4 | Yavapai | 11.5N/11N | 1E/1E | 31/6 | 20 | 1 | \$ 155 |
| 14 | 92803 | Goodwin #1 | Yavapai | 12N | 1W | 28, 33 | 31.68 | 2 | \$ 310 |
| 15 | 95198 | Gold Palace I | Yavapai | 12N | 1W | 19 | 20 | 1 | \$ 155 |
| 16 | 95199 | Gold Palace II | Yavapai | 12N | 1W | 19 | 20 | 1 | \$ 155 |
| 17 | 95200 | Gold Palace III | Yavapai | 12N | 1W | 19 | 20 | 1 | \$ 155 |
| 18 | 95201 | Gold Palace IV | Yavapai | 12N | 1W | 19 | 20 | 1 | \$ 155 |
| 19 | 95202 | Gold Palace V | Yavapai | 12N | 1W | 19 | 20 | 1 | \$ 155 |
| 20 | 95203 | Gold Palace VI | Yavapai | 12N | 1W | 19 | 20 | 1 | \$ 155 |
| 21 | 95204 | Gold Palace VII | Yavapai | 12N | 1W | 19 | 20 | 1 | \$ 155 |
| 22 | 95205 | Gold Palace VIII | Yavapai | 12N | 1W | 30 | 20 | 1 | \$ 155 |
| 23 | 96051 | JDR #1 | Yavapai | 12.5N | 2W | 21 | 20 | 1 | \$ 155 |
| 24 | 96052 | JDR #2 | Yavapai | 12.5N | 2W | 21 | 20 | 1 | \$ 155 |
| 25 | 96053 | JDR #3 | Yavapai | 12.5N/13N | 2W/2W | 21/33 | 20 | 1 | \$ 155 |
| 26 | 102389 | Mandala 2 & 3 | Yavapai | 10N | 2E | 30 | 20 | 1 | \$ 155 |
| 27 | 126535 | Mandala 7 | Yavapai | 10N | 2E | 30 | 20 | 1 | \$ 155 |
| 28 | 126536 | Mandala 8 | Yavapai | 10N | 2E | 30 | 20 | 1 | \$ 155 |
| 29 | 126537 | Mandala 9 | Yavapai | 10N | 2E | 30 | 20 | 1 | \$ 155 |
| 30 | 126538 | Mandala 10 | Yavapai | 10N | 2E | 31 | 20 | 1 | \$ 155 |
| 31 | 129334 | Mandala 12 | Yavapai | 10N | 2E | 30 | 20 | 1 | \$ 155 |
| 32 | 130489 | Protecto 2 | Yavapai | 12N | 1W | 33 | 20 | 1 | \$ 155 |
| 33 | 142356 | Donkey Mine #4 | Yavapai | 12N | 1W | 33 | 20 | 1 | \$ 155 |
| 34 | 157621 | Mandala 14 | Yavapai | 10N | 2E | 30 | 20 | 1 | \$ 155 |
| 35 | 170911 | Wednesday Hope #1 | Yavapai | 10N | 2E | 31 | 20 | 1 | \$ 155 |
| 36 | 174224 | Big Rock #1 | Yavapai | 12N | 1W | 10, 11 | 20 | 1 | \$ 155 |
| 37 | 174225 | Big Rock #2 | Yavapai | 12N | 1W | 10 | 20 | 1 | \$ 155 |
| 38 | 191670 | Roadrunner #1 | Yavapai | 12.5N | 1W | 25 | 12.85 | 1 | \$ 155 |
| 39 | 191671 | Roadrunner #2 | Yavapai | 12.5N | 1W | 25 | 20 | 1 | \$ 155 |
| 40 | 196365 | Turkey Buzzard #1 | Yavapai | 11N | 3E | 30 | 13.77 | 1 | \$ 155 |
| 41 | 235841 | Betty #4 | Yavapai | 12N | 1W | 14 | 20 | 1 | \$ 155 |
| 42 | 235842 | Betty #5 | Yavapai | 12N | 1W | 14 | 20 | 1 | \$ 155 |
| 43 | 236096 | Gary's Place #1A | Yavapai | 12N | 1W | 14 | 20 | 1 | \$ 155 |
| 44 | 244561 | Gold Dust #2 | Yavapai | 11N | 3E | 30 | 6.88 | 1 | \$ 155 |
| 45 | 247112 | Sando | Maricopa | 7N | 3W | 28 | 20 | 1 | \$ 155 |
| 46 | 251044 | Faith #3 | Yavapai | 9N | 5W | 13 | 20 | 1 | \$ 155 |
| 47 | 251047 | Lords Blessing | Yavapai | 9N | 5W | 13 | 20 | 1 | \$ 155 |
| 48 | 254410 | Jackass | Yavapai | 11N | 1E | 34, 35 | 19.97 | 1 | \$ 155 |
| 49 | 254411 | Jenny | Yavapai | 11N | 1E | 34 | 20 | 1 | \$ 155 |
| 50 | 254412 | Hinny | Yavapai | 11N | 1E | 34 | 16.22 | 1 | \$ 155 |
| 51 | 258455 | Turkey Buzzard Ext. | Yavapai | 11N | 3E | 30 | 10 | 1 | \$ 155 |
| 52 | 258456 | Turkey Buzzard #2 | Yavapai | 11N | 3E | 30 | 20 | 1 | \$ 155 |
| 53 | 258457 | Turkey Buzzard #3 | Yavapai | 11N | 3E | 30 | 20 | 1 | \$ 155 |
| 54 | 258458 | Turkey Buzzard #4 | Yavapai | 11N | 3E | 30 | 20 | 1 | \$ 155 |
| 55 | 291104 | Cas #2 | Maricopa | 7N | 3W | 29 | 20 | 1 | \$ 155 |

PHOENIX ARIZONA
 RECEIVED
 MAY STATE OFFICE
 AUG 27 10:53 AM

| Seq. # | AMC # | Claim Name | County | Township | Range | Section | Total Acres | 20 Acre Segments | Fed. Maint. Fee |
|--------|--------|-------------------|----------|----------|-------|---------|-------------|------------------|-----------------|
| 56 | 300332 | Wolf #5 | Yavapai | 11.5N | 1E | 31 | 20 | 1 | \$ 155 |
| 57 | 300333 | Wolf #6 | Yavapai | 11N | 1E | 5, 6 | 20 | 1 | \$ 155 |
| 58 | 313473 | Patriot 1 | Yavapai | 11N | 1W | 4 | 20 | 1 | \$ 155 |
| 59 | 313474 | Patriot 2 | Yavapai | 11N | 1W | 3, 4 | 20 | 1 | \$ 155 |
| 60 | 313475 | Patriot 3 | Yavapai | 11N | 1W | 3 | 20 | 1 | \$ 155 |
| 61 | 313476 | Patriot 4 | Yavapai | 11N | 1W | 3 | 20 | 1 | \$ 155 |
| 62 | 313477 | Patriot 5 | Yavapai | 11N | 1W | 3 | 20 | 1 | \$ 155 |
| 63 | 314304 | Oro De Valenzuela | Yavapai | 11N | 1E | 14 | 20 | 1 | \$ 155 |
| 64 | 314631 | RR-Humbug #3 | Yavapai | 8N | 1E | 29, 30 | 20 | 1 | \$ 155 |
| 65 | 321061 | Lefty #2 | Yavapai | 8N | 1E | 30 | 20 | 1 | \$ 155 |
| 66 | 326311 | Carrie #1 | Maricopa | 7N | 3W | 31 | 40 | 2 | \$ 310 |
| 67 | 326312 | Carrie #2 | Maricopa | 7N | 3W | 31 | 40 | 2 | \$ 310 |
| 68 | 326313 | Carrie #3 | Maricopa | 7N | 3W | 30 | 20 | 1 | \$ 155 |
| 69 | 326314 | Carrie #4 | Maricopa | 7N | 3W | 30 | 20 | 1 | \$ 155 |
| 70 | 326315 | Pennyweight #1 | Maricopa | 7N | 3W | 29 | 40 | 2 | \$ 310 |
| 71 | 326316 | Pennyweight #2 | Maricopa | 7N | 3W | 29 | 20 | 1 | \$ 155 |
| 72 | 326319 | Pat | Maricopa | 7N | 3W | 31 | 20 | 1 | \$ 155 |
| 73 | 326322 | Double R | Maricopa | 6N | 4W | 12 | 80 | 4 | \$ 620 |
| 74 | 326325 | Jake #3 | Maricopa | 7N | 3W | 29 | 20 | 1 | \$ 155 |
| 75 | 326327 | Pilgrim #1 | Maricopa | 7N | 3W | 31 | 20 | 1 | \$ 155 |
| 76 | 326754 | Keystone #1 | Pinal | 5S | 15E | 4 | 20 | 1 | \$ 155 |
| 77 | 326757 | Keystone #4 | Pinal | 5S | 15E | 4 | 20 | 1 | \$ 155 |
| 78 | 326758 | Keystone #5 | Pinal | 5S | 15E | 4 | 20 | 1 | \$ 155 |
| 79 | 326760 | Keystone #7 | Pinal | 5S | 15E | 4 | 20 | 1 | \$ 155 |
| 80 | 326761 | Keystone #8 | Pinal | 5S | 15E | 4 | 20 | 1 | \$ 155 |
| 81 | 326762 | Keystone #9 | Pinal | 5S | 15E | 4 | 20 | 1 | \$ 155 |
| 82 | 326764 | Keystone #11 | Pinal | 5S | 15E | 4 | 20 | 1 | \$ 155 |
| 83 | 326765 | Keystone #12 | Pinal | 5S | 15E | 4 | 20 | 1 | \$ 155 |
| 84 | 326772 | Range Bull # 1 | Maricopa | 7N | 3W | 21 | 20 | 1 | \$ 155 |
| 85 | 327930 | Red Bird # 7 | Maricopa | 7N | 3W | 17 | 20 | 1 | \$ 155 |
| 86 | 327931 | Red Bird # 8 | Maricopa | 7N | 3W | 20 | 20 | 1 | \$ 155 |
| 87 | 328302 | Red Bird # 9 | Maricopa | 7N | 3W | 17 | 20 | 1 | \$ 155 |
| 88 | 328593 | Ceedee #2 | Yavapai | 8N | 1W | 5 | 20 | 1 | \$ 155 |
| 89 | 328594 | Ceedee #3 | Yavapai | 8N | 1W | 5 | 20 | 1 | \$ 155 |
| 90 | 328595 | Ceedee #4 | Yavapai | 8N | 1W | 5 | 20 | 1 | \$ 155 |
| 91 | 328597 | Ceedee #7 | Yavapai | 8N | 1W | 4 | 20 | 1 | \$ 155 |
| 92 | 328598 | Ceedee #8 | Yavapai | 8N | 1W | 4 | 20 | 1 | \$ 155 |
| 93 | 328605 | Burro #1 | Yavapai | 12N | 1W | 33 | 20 | 1 | \$ 155 |
| 94 | 328606 | Burro #2 | Yavapai | 11N | 1W | 4 | 20 | 1 | \$ 155 |
| 95 | 328698 | Cass No. 4 | Maricopa | 7N | 3W | 29 | 20 | 1 | \$ 155 |
| 96 | 328699 | Cass No. 5 | Maricopa | 7N | 3W | 29 | 20 | 1 | \$ 155 |
| 97 | 328700 | Cass No. 6 | Maricopa | 7N | 3W | 29 | 20 | 1 | \$ 155 |
| 98 | 328701 | Cass No. 7 | Maricopa | 7N | 3W | 29 | 20 | 1 | \$ 155 |
| 99 | 328702 | Cass No. 8 | Maricopa | 7N | 3W | 29 | 20 | 1 | \$ 155 |
| 100 | 328703 | Ceedee #1 | Yavapai | 8N | 1W | 5 | 20 | 1 | \$ 155 |
| 101 | 328704 | Ceedee #5 | Yavapai | 8N | 1W | 5 | 20 | 1 | \$ 155 |
| 102 | 328705 | Genes Dream | Yavapai | 9.5N | 2E | 20, 21 | 20 | 1 | \$ 155 |
| 103 | 328742 | Red Bird #11 | Yavapai | 10N | 1E | 1 | 40 | 2 | \$ 310 |
| 104 | 329020 | RR #1 | Maricopa | 6N | 4W | 1 | 20 | 1 | \$ 155 |
| 105 | 329021 | RR #2 | Maricopa | 6N | 4W | 1 | 20 | 1 | \$ 155 |
| 106 | 329022 | RR #3 | Maricopa | 6N | 4W | 1 | 20 | 1 | \$ 155 |
| 107 | 329023 | RR #4 | Maricopa | 6N | 4W | 1 | 20 | 1 | \$ 155 |
| 108 | 329318 | Mercer's Place | Yavapai | 11N | 1W | 4 | 20 | 1 | \$ 155 |
| 109 | 329388 | Bad Luck | Yavapai | 12N | 1W | 14, 23 | 20 | 1 | \$ 155 |
| 110 | 329389 | No Luck | Yavapai | 12N | 1W | 23 | 20 | 1 | \$ 155 |

PHOENIX, ARIZONA
 MAY 27 10:53 AM '53
 RECEIVED
 MAR STATE OFFICE

United States Department of the Interior
Bureau of Land Management
 LANDS/RECREATION & PLANNING
 ONE N CENTRAL AVE
 PHOENIX, AZ 85004 -2203
 Phone: 602-417-9200

Receipt

No: 3113847

| | |
|--|--|
| Transaction #: 3205581 | |
| Date of Transaction: 08/27/2014 | |
| CUSTOMER: | |
| ROADRUNNER PROSPECTORS CLUB INC PO BOX 56804 PHOENIX, AZ 85079-6804 US | |

| LINE # | QTY | DESCRIPTION | REMARKS | UNIT PRICE | TOTAL |
|---------------|------|--|-------------------|------------|--------------------|
| 1 | 1.00 | LOCATABLE MINERALS / MINING CLAIMS- NOT NEW-UNADJUD, ONE AUTH NO. ONLY / MINING CLAIM MONEY RECEIVED CASES: AMC11413/\$27745.00 | MAINT 2015/163 | - n/a - | 27745.00 |
| TOTAL: | | | | | \$27,745.00 |

| PAYMENT INFORMATION | | | |
|---------------------|-----------|---|----------------------|
| 1 | AMOUNT: | 27745.00 | POSTMARKED: N/A |
| | TYPE: | CHECK | RECEIVED: 08/27/2014 |
| | CHECK NO: | 8270 | |
| | NAME: | ROADRUNNER PROSPECTORS CLUB INC PO BOX 56804 PHOENIX AZ 85079-6804 US | |

| |
|---|
| REMARKS |
| FEES PAID BASED ON AMENDMENTS FILED PREVIOUSLY - PER CUST |

This receipt was generated by the automated BLM Collections and Billing System and is a paper representation of a portion of the official electronic record contained therein.

amended claims
ON LIST

AXAC

| | | |
|--------|-------------------|-------|
| 129334 | Mandala 12 | 8 |
| 254410 | Jackass | 27.95 |
| 254412 | Hinnx - | 40 |
| 326325 | Jake #3 | 40 |
| 326316 | Pennyweight #2 | 40 |
| 314631 | RR-Hamburg #3 | 40 |
| 328302 | Red Bird #9 | |
| 314304 | Oro De Valenzuela | 23.42 |

These claims have been amended to 20 acres and received by BLM but not updated yet on Serial Register Page.

We're paying on amended claim size.

RECEIVED
1 M AZ STATE OFFICE
2014 AUG 27 A 10:53
PHOENIX, ARIZONA

alphagraphics

Central Avenue Center
3525 North Central Avenue | Phoenix, Arizona 85012
602 | 274 | 2345
www.us006.alphagraphics.com

NOTICE!!

These documents have been scanned!

Do not place un-scanned documents beneath this notice!

Do not remove this notice from this file!

GPO Jacket No. 560-102
Print Order 61540
Rise Business Services, LLC
Job=AZ15 6/6/2019



Box Number= AZ15125



Claim Begin-End: AMC427326-AMC427326

5 Miscellaneous



AZ15125-18

AMC356595-AMC427389

**NO
DOCUMENTS
FOUND**

NO DOCUMENTS FOUND
NO DOCUMENTS FOUND

NOTICE!!

These documents have been scanned!

Do not place un-scanned documents beneath this notice!

Do not remove this notice from this file!

GPO Jacket No. 560-102
Print Order 61540
Rise Business Services, LLC
Job=AZ15 6/6/2019



Box Number= AZ15125



Claim Begin-End: AMC427326-AMC427326

6 Location Notices-Amendments and Supporting Documents



AZ15125-18

AMC356595-AMC427389

MINING CLAIM STATUS REPORT

Data Entered: 03/11/14 RAM

MTP Checked By: [Signature]
GEO Checked By: [Signature]

LEAD SERIAL NUMBER: AMC 427326 thru AMC

NUMBER OF CLAIMS & TYPE:

- LODE
PLACER
ASSOCIATION PLACER
MILL SITE
TUNNEL SITE

CHARGES:

Table with columns for charge type and amount. Includes Location Fee (\$34), Processing Fee (\$20), Maintenance Fee (\$140), and a total of \$194.

TOTAL ACREAGE: 20 Per Claim (Placer Only)

NUMBER OF LOCATORS: 1

DOCUMENTS RECEIVED VIA: Over-the-Counter [checked] Mail [] TIMELY FILED: Yes [checked] No []

LEGAL DESCRIPTION: T 11.5N R 1E SEC 30

BLM [] FOREST SERVICE [checked] Prescott SUBJ TO PL 359: Yes [] No []

SPLIT ESTATE: N/A [] SX [] PX [] OTHER [] SRHA [] Was proper Notice filed if located on SHRA Land? Yes [] No []

RECONVEYED MINERALS ON BLM LAND REQUIRE OPENING ORDER FROM 1944 TO 1993:

Open to Entry On N/A []

COMMENTS/STATUS: VOID [] PARTIALLY VOID [] PVT MINERALS [] WITHDRAWN LANDS [] OTHER []

[] Claimant acknowledges that portions of the following claim(s) site(s) may be void or voidable.

Printed Name of Claimant Signature of Claimant

*****FINAL ADJUDICATION*****

DATE 6/24/14 INITIALS AT

Vertical stamp: A110427326

When recorded mail to:

Roadrunner Prospectors' Club, Inc.
PO Box 56804
Phoenix, AZ 85079

[] Check here if this is a change of address

Telephone: (602) 274-2521
Email: rrpc-office@roadrunnergold.com

LOCATION NOTICE FOR PLACER MINING CLAIM

NOTICE IS HEREBY GIVEN that the Rexs' Place

_____ placer mining claim has been located by

Roadrunner Prospectors' Club, Inc. whose current mailing

address is: PO Box 56804

Phoenix, AZ 85079

BLM
Date
Stamp

PHOENIX, AZ

2014 FEB 24 P 12: 16

RECEIVED
B.L.M. AZ STATE OFFICE

The general course of this claim is North to South and it is situated in

Yavapai County, Arizona.

This claim is 1320 feet in length and 660 feet in width. This claim runs from the

location monument on which this location notice is posted approximately 1320 feet in a South direction to the South end line and 660 feet in a east direction to the east end line.

This claim is marked by four monuments, one at each corner of the claim.

The location monument on which this notice is posted is situated within Section 30, Township 11 1/2 N, Range 1 E, Gila Salt River Base and Meridian, Arizona. This claim encompasses

portions of the following legal subdivision(s) if located by legal subdivision or the following quarter section (s),

section (s), Township (s) and Range(s) W 1/2, SE 1/4, NE 1/4 Sec 30,

T 11 1/2 N, R 1 E, Gila Salt River Base and Meridian, Arizona.

The locality of this claim with reference to some natural object or permanent monument and additional

information (if any) concerning its locality are as follows: The NE corner is 1320'

south and 660' west of the NE corner of Sec 30,

T 11 1/2 N, R 1 E Gila Salt River Base + Meridian.

DATED AND POSTED on the ground this 24th day of February, 2014.

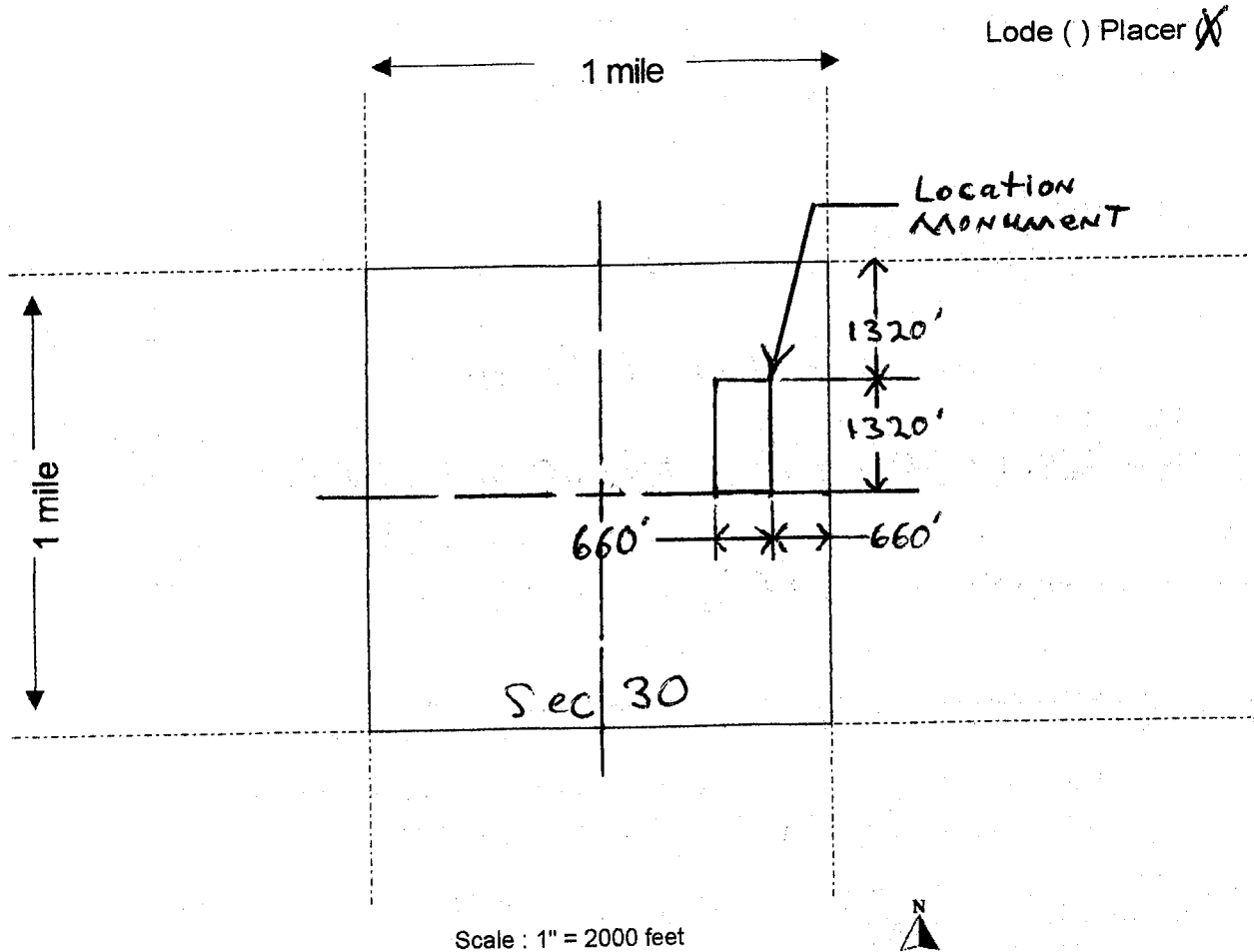
LOCATOR (s) Roadrunner Prospectors' Club, Inc.

Bob W. [Signature] (agent)

Form MCF102
Revised July 2005

AN0427326

MINING CLAIM MAP



Lode () Placer (X)

Location MONUMENT

1320'

1320'

660'

660'

Sec 30

Scale : 1" = 2000 feet



The above map depicts the Rex's Place mining claim, which is located in Section (s) 30, Township 11 1/2 N, Range 1 E, Gila and Salt River Base and Meridian, Yavapai County, Arizona.

2. The type of corner and location monuments used are as follows: Capped PVC pipe over steel posts

3. The bearings and distances in degrees and feet between claim corners are as depicted on the map.

DEPARTMENT OF INTERIOR
BUREAU OF LAND MANAGEMENT

Input Parameters for Geographic Report with Land

System Id = CR

Admin State = AZ

Geo State =

Casetype Begins With

Case Disp Txt = AUTHORIZED, CANCELLED, EXPIRED, PENDING, REJECTED, RELINQUISHED, VOID, WITHDRAWN

Mer Twp Rng =

Section =

Mtrs = 14 0112N 0010E 030, 14 0112N 0010E 999

Commodity =

Commodity Txt =

Pending Org =

Pend Org Decode =

Total Rows Returned: 0

